



SZABO SCANDIC

Part of Europa Biosite

Produktinformation



Forschungsprodukte & Biochemikalien



Zellkultur & Verbrauchsmaterial



Diagnostik & molekulare Diagnostik



Laborgeräte & Service

Weitere Information auf den folgenden Seiten!
See the following pages for more information!



Lieferung & Zahlungsart

siehe unsere [Liefer- und Versandbedingungen](#)

Zuschläge

- Mindermengenzuschlag
- Trockeneiszuschlag
- Gefahrgutzuschlag
- Expressversand

SZABO-SCANDIC HandelsgmbH

Quellenstraße 110, A-1100 Wien

T. +43(0)1 489 3961-0

F. +43(0)1 489 3961-7

mail@szabo-scandic.com

www.szabo-scandic.com

[linkedin.com/company/szaboscandic](https://www.linkedin.com/company/szaboscandic) 

Datasheet for 610-1107

Mouse IgM (mu chain) Antibody

Overview

| | |
|----------------------|--|
| Description: | Goat Anti-Mouse IgM (mu chain) Antibody - 610-1107 |
| Item No.: | 610-1107 |
| Size: | 2 mg |
| Applications: | Dot Blot, ELISA, Other |
| Reactivity: | Mouse |
| Host Species: | Goat |

Product Details

| | |
|----------------------|---|
| Background: | Anti-Mouse IgM (mu chain) antibody generated in goat detects specifically mouse IgM (mu chain). Immunoglobulin M is the largest antibody isotype and the first to be secreted against an initial exposure to antigen. IgM is predominantly produced in the spleen. Formed from covalently linking 5 immunoglobulins together, the approximate molecular weight of IgM is 900kDa and possesses 10 binding sites (though due to the size of most antigens, not all sites are capable of binding at once). Due to this large size, IgM is typically isolated to the serum. Anti-Mouse IgM antibody is ideal for investigators in Immunology, Microbiology, and Cell Biology. |
| Synonyms: | goat anti-Mouse IgM (mu chain) Antibody, Gt-a-Mouse (mu chain) antibody, Mouse IgM (mu chain) Antibody in goat, Goat anti-mouse IgM Secondary Antibody |
| Host Species: | Goat |
| Specificity: | IgM μ chain |
| Clonality: | Polyclonal |
| Format: | IgG |

Target Details

| | |
|------------------------|--------------------------|
| Reactivity: | Mouse |
| Immunogen Type: | Native Protein |
| Immunogen: | Mouse IgM whole molecule |

Purity/Specificity: Anti-Mouse IgM (mu chain) was prepared from monospecific antiserum by immunoaffinity chromatography using Mouse IgM coupled to agarose followed by solid phase adsorption(s). Assay by immunoelectrophoresis resulted in a single precipitin arc against anti-Goat Serum, Mouse IgM and Mouse Serum. No reaction was observed against other mouse heavy or light chain proteins.

Application Details

| | |
|--------------------------------|---|
| Tested Applications: | Dot Blot, ELISA |
| Suggested Applications: | Other (Based on references) |
| Application Note: | Anti-Mouse IgM (mu chain) has been tested by ELISA, dot blot, and western blot and is suitable for immunoblotting (western or dot blot), ELISA, and immunohistochemistry assays requiring lot-to-lot consistency. |
| Assay Dilutions: | All assays should be optimized by the user. Recommended dilutions (if any) may be listed below. |
| ELISA: | 1:20,400 - 1:40,400 |
| IHC: | 1:1,000 - 1:5,000 |
| WB: | 1:2,000 - 1:10,000 |

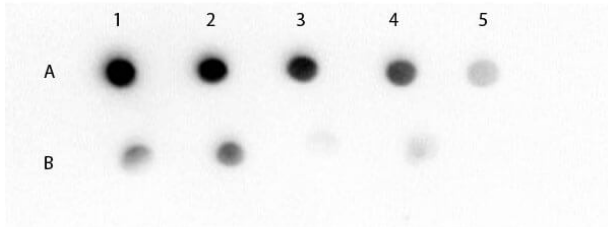
Formulation

| | |
|------------------------|--|
| Physical State: | Liquid (sterile filtered) |
| Concentration: | 2.19 mg/mL by UV absorbance at 280 nm |
| Buffer: | 0.02 M Potassium Phosphate, 0.15 M Sodium Chloride, pH 7.2 |
| Preservative: | 0.01% (w/v) Sodium Azide |

Shipping & Handling

| | |
|----------------------------|--|
| Shipping Condition: | Wet Ice |
| Storage Condition: | Store vial at 4° C prior to opening. This product is stable for several weeks at 4° C as an undiluted liquid. Dilute only prior to immediate use. For extended storage aliquot contents and freeze at -20° C or below. Avoid cycles of freezing and thawing. |
| Expiration: | Expiration date is one (1) year from date of receipt. |

Images

**Dot Blot**

Dot Blot of Mouse IgM (mu chain) (GOAT) Antibody. Lane 1A: Mouse IgM (100 ng). Lane 1B: Mouse IgG (100 ng).

Lanes 2-5: serial 3-fold dilution. Primary Antibody: Mouse IgM (mu chain) Antibody at 1 µg/mL at RT for 60 minutes.

Secondary Antibody: Donkey Anti-Goat IgG Antibody HRP Conj'd (p/n 605-703-125) at 1;40,000 dilution of 1 mg/mL at RT for 30 minutes. Block: MB-070 at RT for 30 min.

References

- Fernando H Y Cesena et al. Immune-modulation by polyclonal IgM treatment reduces atherosclerosis in hypercholesterolemic apoE^{-/-} mice. *Atherosclerosis*. (2012)

Disclaimer

This product is for research use only and is not intended for therapeutic or diagnostic applications. Please contact a technical service representative for more information. All products of animal origin manufactured by Rockland Immunochemicals are derived from starting materials of North American origin. Collection was performed in United States Department of Agriculture (USDA) inspected facilities and all materials have been inspected and certified to be free of disease and suitable for exportation. All properties listed are typical characteristics and are not specifications. All suggestions and data are offered in good faith but without guarantee as conditions and methods of use of our products are beyond our control. All claims must be made within 30 days following the date of delivery. The prospective user must determine the suitability of our materials before adopting them on a commercial scale. Suggested uses of our products are not recommendations to use our products in violation of any patent or as a license under any patent of Rockland Immunochemicals, Inc. If you require a commercial license to use this material and do not have one, then return this material, unopened to: Rockland Inc., P.O. BOX 5199, Limerick, Pennsylvania, USA.