



SZABO SCANDIC

Part of Europa Biosite

Produktinformation



Forschungsprodukte & Biochemikalien



Zellkultur & Verbrauchsmaterial



Diagnostik & molekulare Diagnostik



Laborgeräte & Service

Weitere Information auf den folgenden Seiten!
See the following pages for more information!



Lieferung & Zahlungsart

siehe unsere [Liefer- und Versandbedingungen](#)

Zuschläge

- Mindermengenzuschlag
- Trockeneiszuschlag
- Gefahrgutzuschlag
- Expressversand

SZABO-SCANDIC HandelsgmbH

Quellenstraße 110, A-1100 Wien

T. +43(0)1 489 3961-0

F. +43(0)1 489 3961-7

mail@szabo-scandic.com

www.szabo-scandic.com

[linkedin.com/company/szaboscandic](https://www.linkedin.com/company/szaboscandic) 

Datasheet for 610-1202

Mouse IgG (H&L) Antibody Fluorescein Conjugated**Overview**

Description:	Goat Anti-Mouse IgG (H&L) Antibody Fluorescein Conjugated - 610-1202
Item No.:	610-1202
Size:	2 mg
Applications:	Dot Blot, WB, IF, IHC, Multiplex
Reactivity:	Mouse
Host Species:	Goat

Product Details

Background:	Anti-Mouse IgG [H&L] Fluorescein Antibody generated in goat detects reactivity to Mouse IgG. Secreted as part of the adaptive immune response by plasma B cells, immunoglobulin G constitutes 75% of serum immunoglobulins. Immunoglobulin G binds to viruses, bacteria, as well as fungi and facilitates their destruction or neutralization via agglutination (and thereby immobilizing them), activation of the complement cascade, and opsonization for phagocytosis. The whole IgG molecule possesses both the F(c) region, recognized by high-affinity Fc receptor proteins, as well as the F(ab) region possessing the epitope-recognition site. Both the Heavy and Light chains of the antibody molecule are present. Secondary Antibodies are available in a variety of formats and conjugate types. When choosing a secondary antibody product, consideration must be given to species and immunoglobulin specificity, conjugate type, fragment and chain specificity, level of cross-reactivity, and host-species source and fragment composition.
Synonyms:	Goat Anti-Mouse IgG Secondary Antibody fluorescein Conjugated, Goat Anti-Mouse IgG Antibody FITC Conjugated, GAM-FITC, Anti-mouse IgG secondary antibody, anti-mouse IgG Fluorescein conjugated secondary antibody, Gt Anti-Ms IgG FITC Conjugated Antibody
Host Species:	Goat
Specificity:	IgG (H&L)
Conjugate:	Fluorescein (FITC)
Clonality:	Polyclonal
Format:	IgG
F/P Ratio:	2.75

Specific Activity: 2.75

Target Details

Reactivity: Mouse

Immunogen: Mouse IgG whole molecule

Purity/Specificity: Goat Anti-Mouse IgG [H&L] FITC Conjugated Antibody was prepared from monospecific antiserum by immunoaffinity chromatography using Mouse IgG coupled to agarose beads followed by solid phase adsorption(s) to remove any unwanted reactivities. Assay by immunoelectrophoresis resulted in a single precipitin arc against anti-Fluorescein, anti-Goat Serum, Mouse IgG and Mouse Serum.

Application Details

Tested Applications: Dot Blot, WB

Suggested Applications: IF, IHC, Multiplex (Based on references)

Application Note: Anti-Mouse IgG FITC Conjugated Antibody has been tested by dot blot and western blot and is designed for immunofluorescence microscopy, flow cytometry, fluorescence based plate assays (FLISA) and fluorescent western blotting. This product is also suitable for multiplex analysis, including multicolor imaging, utilizing various commercial platforms.

Assay Dilutions: All assays should be optimized by the user. Recommended dilutions (if any) may be listed below.

FC: 1:500 - 1:2,500

FLISA: 1:10,000 - 1:50,000

IF: 1:1,000 - 1:5,000

WB: User Optimized

Formulation

Physical State: Lyophilized

Concentration: 2.0 mg/mL by UV absorbance at 280 nm

Buffer: 0.02 M Potassium Phosphate, 0.15 M Sodium Chloride, pH 7.2

Preservative: 0.01% (w/v) Sodium Azide

Stabilizer: 0.1 mg/ml Bovine Serum Albumin (BSA) - IgG and Protease free, 50% (v/v) Glycerol

Reconstitution Volume: 1.0 mL

Reconstitution Buffer: Restore with deionized water (or equivalent)

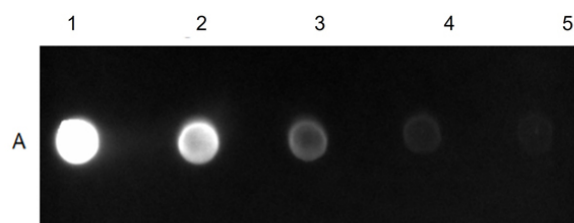
Shipping & Handling

Shipping Condition: Ambient

Storage Condition: Store vial at 4° C prior to restoration. For extended storage aliquot contents and freeze at -20° C or below. Avoid cycles of freezing and thawing. Centrifuge product if not completely clear after standing at room temperature. This product is stable for several weeks at 4° C as an undiluted liquid. Dilute only prior to immediate use.

Expiration: Expiration date is one (1) year from date of receipt.

Images

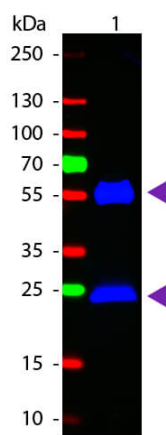


Dot Blot

Dot Blot Results of Goat Anti-Mouse IgG Fluorescein Conjugated Antibody.

Mouse IgG (p/n 010-0102) sample loaded 1-100ng, 2-33.33ng, 3- 11.11ng, 4- 3.70ng, 5- 1.23ng.

Goat Anti-Mouse IgG Fluorescein Conjugated Antibody at 1.0µg/mL for 60mins at RT. Blocking Buffer for Fluorescent Western Blotting (p/n MB-070) for 60mins at RT. Chemi filter.



Western Blot

Western Blot of Goat anti-Mouse IgG Fluorescein Conjugated Secondary Antibody. Lane 1: Mouse IgG. Load: 50 ng per lane. Primary antibody: None. Secondary antibody: Fluorescein goat secondary antibody at 1:1,000 for 60 min at RT. Block: MB-070 for 30 min at RT. Predicted/Observed size: 25 & 55 kDa, 25 & 55 kDa for Mouse IgG. Other band(s): None.

References

- Liu M et al. Co-culture models of endothelial cells, macrophages, and vascular smooth muscle cells for the study of the natural history of atherosclerosis. *PLoS One*. (2023)
- Liu M et al. Role of triggering receptor expressed on myeloid cells-1 in the mechanotransduction signaling pathways that link low shear stress with inflammation. *Sci Rep*. (2023)
- Kolijn D. et al. Enhanced Cardiomyocyte Function in Hypertensive Rats With Diastolic Dysfunction and Human Heart Failure Patients After Acute Treatment With Soluble Guanylyl Cyclase (sGC) Activator. *Front Physiol*. (2020)
- Wang Y. et al. Exogenous spermine attenuates rat diabetic cardiomyopathy via suppressing ROS-p53 mediated downregulation of calcium-sensitive receptor. *Redox Biol*. (2020)
- Sundaramurthy S. et al. FHOD-1 is the only formin in *Caenorhabditis elegans* that promotes striated muscle growth and Z-line organization in a cell autonomous manner. *Cytoskeleton (Hoboken)*. (2020)
- Saferali A, Tang AC, Strug LJ, et al. Immunomodulatory function of the cystic fibrosis modifier gene BPIFA1. *PLoS One*. (2020)
- Vitacolonna M et al. In-vivo quantification of the revascularization of a human acellular dermis seeded with EPCs and MSCs in co-culture with fibroblasts and pericytes in the dorsal chamber model in pre-irradiated tissue. *Cell Tissue Bank*. (2017)
- Kryszke MH et al. Post-transcriptional gene silencing activity of human GIGYF2. *Biochem Biophys Res Commun*. (2016)
- Zhang K et al. Predicting Abdominal Aortic Aneurysm Target Genes by Level-2 Protein-Protein Interaction. *PLoS One* (2015)
- Adefolaju GA et al. BAX/BCL-2 mRNA and protein expression in human breast MCF-7 cells exposed to drug vehicles-methanol and dimethyl sulfoxide (DMSO) for 24 hrs. *Niger Med J*. (2015)
- Cavaglia M et al. Regional variation in brain capillary density and vascular response to ischemia. *Brain Res*. (2001)
- Bradley BJ et al. CD8 T cells are not required for islet destruction induced by a CD4+ islet-specific T-cell clone. *Diabetes*. (1992)
- SR Smith et al. Inhibition of collagen II-induced arthritis in mice--a comparison of the effects of Sch 24937, immunosuppressants and nonsteroidal antiinflammatory drugs on the clinical expression of disease. *Int J Immunopharmacol*. (1990)

Disclaimer

This product is for research use only and is not intended for therapeutic or diagnostic applications. Please contact a technical service representative for more information. All products of animal origin manufactured by Rockland Immunochemicals are derived from starting materials of North American origin. Collection was performed in United States Department of Agriculture (USDA) inspected facilities and all materials have been inspected and certified to be free of disease and suitable for exportation. All properties listed are typical characteristics and are not specifications. All suggestions and data are offered in good faith but without guarantee as conditions and methods of use of our products are beyond our control. All claims must be made within 30 days following the date of delivery. The prospective user must determine the suitability of our materials before adopting them on a commercial scale. Suggested uses of our products are not recommendations to use our products in violation of any patent or as a license under any patent of Rockland Immunochemicals, Inc. If you require a commercial license to use this material and do not have one, then return this material, unopened to: Rockland Inc., P.O. BOX 5199, Limerick, Pennsylvania, USA.