



SZABO SCANDIC

Part of Europa Biosite

Produktinformation



Forschungsprodukte & Biochemikalien



Zellkultur & Verbrauchsmaterial



Diagnostik & molekulare Diagnostik



Laborgeräte & Service

Weitere Information auf den folgenden Seiten!
See the following pages for more information!



Lieferung & Zahlungsart

siehe unsere [Liefer- und Versandbedingungen](#)

Zuschläge

- Mindermengenzuschlag
- Trockeneiszuschlag
- Gefahrgutzuschlag
- Expressversand

SZABO-SCANDIC HandelsgmbH

Quellenstraße 110, A-1100 Wien

T. +43(0)1 489 3961-0

F. +43(0)1 489 3961-7

mail@szabo-scandic.com

www.szabo-scandic.com

[linkedin.com/company/szaboscandic](https://www.linkedin.com/company/szaboscandic) 

Datasheet for 610-4103

Mouse IgG Fc Antibody**Overview**

Description:	Rabbit Anti-Mouse IgG Fc Antibody - 610-4103
Item No.:	610-4103
Size:	2 mg
Applications:	ELISA
Reactivity:	Mouse
Host Species:	Rabbit

Product Details

Background:	Anti-Mouse IgG F(c) generated in rabbit is a proteolytic fragment of immunoglobulin G (IgG) obtained by limited digestion with the enzyme papain under controlled conditions of temperature, time and pH. Receptors bind the Fc portion of mouse IgG and often this fragment is removed from immunoglobulins to minimize receptor binding and lower background reactivity.
Synonyms:	rabbit anti-Mouse IgG F(c) Antibody, Rb-a-Mouse F(c), Mouse F(c) Antibody in rabbit, Mouse F(c) Secondary Antibody
Host Species:	Rabbit
Specificity:	IgG Fc
Clonality:	Polyclonal
Format:	IgG

Target Details

Reactivity:	Mouse
Immunogen Type:	Native Protein
Immunogen:	Anti-Mouse IgG F(c) was produced by repeated immunization with mouse IgG F(c) fragment in rabbit.

Purity/Specificity: This product was prepared from monospecific antiserum by immunoaffinity chromatography using Mouse IgG coupled to agarose. Assay by immunoelectrophoresis resulted in a single precipitin arc against anti-Rabbit Serum, Mouse IgG, Mouse IgG F(c) and Mouse Serum. No reaction was observed against Mouse IgG F(ab).

Application Details

Tested Applications:	ELISA
Application Note:	Mouse IgG F(c) Antibody has been tested by ELISA and is suitable for immunoblotting (western or dot blot), ELISA, and immunohistochemistry requiring extremely low background levels, lot-to-lot consistency, high titer and specificity.
Assay Dilutions:	All assays should be optimized by the user. Recommended dilutions (if any) may be listed below.
ELISA:	1:100,000 - 1:250,000
IHC:	1:1,000 - 1:5,000
WB:	1:2,000 - 1:10,000

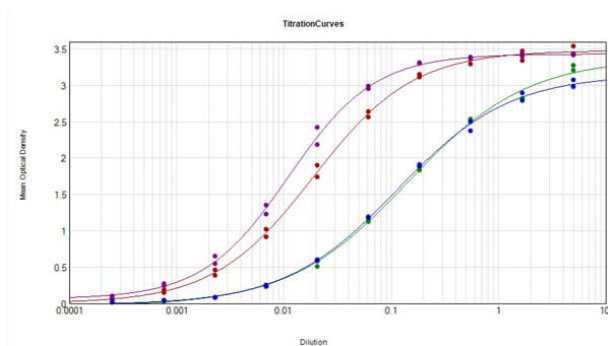
Formulation

Physical State:	Liquid (sterile filtered)
Concentration:	2.1 mg/mL by UV absorbance at 280 nm
Buffer:	0.02 M Potassium Phosphate, 0.15 M Sodium Chloride, pH 7.2
Preservative:	0.01% (w/v) Sodium Azide
Stabilizer:	None

Shipping & Handling

Shipping Condition:	Wet Ice
Storage Condition:	Store vial at 4° C prior to opening. This product is stable for several weeks at 4° C as an undiluted liquid. Dilute only prior to immediate use. For extended storage aliquot contents and freeze at -20° C or below. Avoid cycles of freezing and thawing.
Expiration:	Expiration date is one (1) year from date of receipt.

Images



ELISA

ELISA of Rabbit Anti-Mouse IgG F(c) Antibody tested against purified Mouse IgG F(c). Each well was coated in duplicate with 1.0 μ g of Mouse IgG F(c) (p/n 010-0103) [Red Line], Mouse IgG Fab (p/n 010-0105) [Green line], Mouse IgG F (ab')₂ (p/n 010-0104) [Blue Line], and Mouse IgG (p/n 010-0102) [Purple Line]. The working dilution of Mouse IgG F(c) is 1:53000. The starting dilution of antibody was 5 μ g/ml and the X-axis represents the Log₁₀ of a 3-fold dilution. This titration is a 4-parameter curve fit where the IC₅₀ is defined as the titer of the antibody. Assay performed using HRP Conjugate Stabilizer (p/n MB-076), Goat Anti-Rabbit IgG HRP conjugated (p/n 611-103-122), and TMB substrate (p/n TMBE-1000).

Disclaimer

This product is for research use only and is not intended for therapeutic or diagnostic applications. Please contact a technical service representative for more information. All products of animal origin manufactured by Rockland Immunochemicals are derived from starting materials of North American origin. Collection was performed in United States Department of Agriculture (USDA) inspected facilities and all materials have been inspected and certified to be free of disease and suitable for exportation. All properties listed are typical characteristics and are not specifications. All suggestions and data are offered in good faith but without guarantee as conditions and methods of use of our products are beyond our control. All claims must be made within 30 days following the date of delivery. The prospective user must determine the suitability of our materials before adopting them on a commercial scale. Suggested uses of our products are not recommendations to use our products in violation of any patent or as a license under any patent of Rockland Immunochemicals, Inc. If you require a commercial license to use this material and do not have one, then return this material, unopened to: Rockland Inc., P.O. BOX 5199, Limerick, Pennsylvania, USA.