



SZABO SCANDIC

Part of Europa Biosite

Produktinformation



Forschungsprodukte & Biochemikalien



Zellkultur & Verbrauchsmaterial



Diagnostik & molekulare Diagnostik



Laborgeräte & Service

Weitere Information auf den folgenden Seiten!
See the following pages for more information!



Lieferung & Zahlungsart

siehe unsere [Liefer- und Versandbedingungen](#)

Zuschläge

- Mindermengenzuschlag
- Trockeneiszuschlag
- Gefahrgutzuschlag
- Expressversand

SZABO-SCANDIC HandelsgmbH

Quellenstraße 110, A-1100 Wien

T. +43(0)1 489 3961-0

F. +43(0)1 489 3961-7

mail@szabo-scandic.com

www.szabo-scandic.com

[linkedin.com/company/szaboscandic](https://www.linkedin.com/company/szaboscandic) 

Datasheet for 610-4141

Mouse IgG2a Antibody

Overview

Description:	Rabbit Anti-Mouse IgG2a Antibody - 610-4141
Item No.:	610-4141
Size:	1 mg
Applications:	Dot Blot, ELISA, WB, FC
Reactivity:	Mouse
Host Species:	Rabbit

Product Details

Background:	Anti-MOUSE IgG2a (Gamma 2a chain) (RABBIT) Antibody generated in rabbit detects specifically Mouse IgG2a heavy chain. Anti-Mouse IgG2a is ideal for investigators involved in Serum Protein Component research.
Synonyms:	Rabbit Anti-Mouse IgG2a Antibody, Mouse IgG2a Secondary Antibody, Rb-a-mouse IgG2a
Host Species:	Rabbit
Specificity:	IgG2a
Clonality:	Polyclonal
Format:	IgG

Target Details

Reactivity:	Mouse
Immunogen:	Mouse IgG2a heavy chain
Purity/Specificity:	Anti-MOUSE IgG2a (Gamma 2a chain) (RABBIT) Antibody was prepared from monospecific antiserum by immunoaffinity chromatography using Mouse IgG2a coupled to agarose beads followed by solid phase adsorption(s) to remove any unwanted reactivities. Assay by immunoelectrophoresis resulted in a single precipitin arc against anti-Rabbit Serum, Mouse Serum, Mouse IgG and Mouse IgG2a. Specificity was confirmed by ELISA. For IgG1, IgG2b and IgG3 reactivity was less than 5% against target (IgG2a, IgG).

Application Details

Tested Applications:	Dot Blot, ELISA, WB
Suggested Applications:	FC (Based on references)
Application Note:	Anti-MOUSE IgG2a (Gamma 2a chain) (RABBIT) Antibody has been tested by ELISA, dot blot, and western blot and is suitable for immunohistochemistry requiring extremely low background levels, lot-to-lot consistency, high titer and specificity.
Assay Dilutions:	All assays should be optimized by the user. Recommended dilutions (if any) may be listed below.
ELISA:	1:15,000 - 1:30,000
IHC:	1:2,000 - 1:10,000
WB:	1:4,000 - 1:20,000

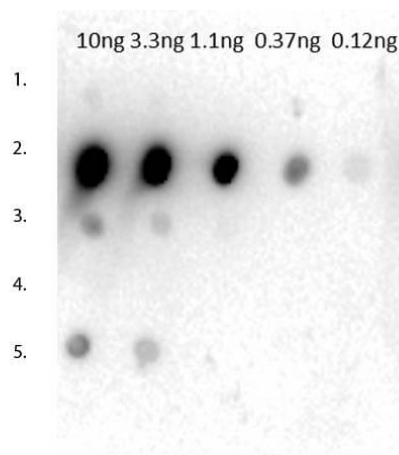
Formulation

Physical State:	Liquid (sterile filtered)
Concentration:	1.02 mg/mL by UV absorbance at 280 nm
Buffer:	0.02 M Potassium Phosphate, 0.15 M Sodium Chloride, pH 7.2
Preservative:	0.01% (w/v) Sodium Azide
Stabilizer:	None

Shipping & Handling

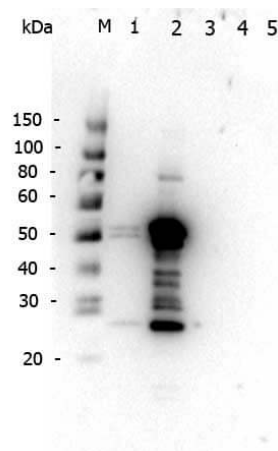
Shipping Condition:	Wet Ice
Storage Condition:	Store vial at 4° C prior to opening. This product is stable for several weeks at 4° C as an undiluted liquid. Dilute only prior to immediate use. For extended storage aliquot contents and freeze at -20° C or below. Avoid cycles of freezing and thawing.
Expiration:	Expiration date is one (1) year from date of receipt.

Images



Dot Blot

Dot Blot of Rabbit Anti-Mouse IgG2a Antibody. Tested with dilutions 10ng, 3.3ng, 1.1ng, 0.37ng, 0.12ng. Lane 1: Mouse IgG1 (p/n 010-0102). Lane 2: Mouse IgG2a (p/n 010-0141). Lane 3: Mouse IgGb (p/n 010-0142). Lane 4: Mouse IgG3 (p/n 010-0143). Lane 5: Mouse IgM (p/n 010-0107). Primary Antibody: Rabbit anti-Mouse IgG2a at 1 μ g/mL for 1 hour at RT. Secondary Antibody: Gt-anti-Rabbit HRP (p/n 611-103-122) at 1:40,000. Blocking Buffer: BlockOut MB-073 for 30 min at RT.



Western Blot

Western Blot of Rabbit anti-Mouse IgG2a antibody. Lane 1: Mouse IgG1 (p/n 010-0102). Lane 2: Mouse IgG2a (p/n 010-0141). Lane 3: Mouse IgG2b (p/n 010-0142). Lane 4: Mouse IgG3 (p/n 010-0143). Lane 5: Mouse IgM (p/n 010-0107). Load: 5 ng per lane. Primary antibody: Mouse IgG2a antibody at 1 μ g/mL for overnight at 4°C. Secondary antibody: Gt-anti-Rabbit HRP (p/n 611-103-122) at 1:40,000 for 30 min at RT. Block: Blocking Buffer for Fluorescent Western Blotting for 30 min at RT. Predicted/Observed size: 50 kDa and 25 kDa, 50 kDa and 25 kDa for Mouse IgG2a. Other band(s): Weak reactivity for to Mouse IgG1.

References

- Zsolt Sebestyén et al. Long wavelength fluorophores and cell-by-cell correction for autofluorescence significantly improves the accuracy of flow cytometric energy transfer measurements on a dual-laser benchtop flow cytometer. *Cytometry*. (2002)

Disclaimer

This product is for research use only and is not intended for therapeutic or diagnostic applications. Please contact a technical service representative for more information. All products of animal origin manufactured by Rockland Immunochemicals are derived from starting materials of North American origin. Collection was performed in United States Department of Agriculture (USDA) inspected facilities and all materials have been inspected and certified to be free of disease and suitable for exportation. All properties listed are typical characteristics and are not specifications. All suggestions and data are offered in good faith but without guarantee as conditions and methods of use of our products are beyond our control. All claims must be made within 30 days following the date of delivery. The prospective user must determine the suitability of our materials before adopting them on a commercial scale. Suggested uses of our products are not recommendations to use our products in violation of any patent or as a license under any patent of Rockland Immunochemicals, Inc. If you require a commercial license to use this material and do not have one, then return this material, unopened to: Rockland Inc., P.O. BOX 5199, Limerick, Pennsylvania, USA.