



SZABO SCANDIC

Part of Europa Biosite

Produktinformation



Forschungsprodukte & Biochemikalien



Zellkultur & Verbrauchsmaterial



Diagnostik & molekulare Diagnostik



Laborgeräte & Service

Weitere Information auf den folgenden Seiten!
See the following pages for more information!



Lieferung & Zahlungsart

siehe unsere [Liefer- und Versandbedingungen](#)

Zuschläge

- Mindermengenzuschlag
- Trockeneiszuschlag
- Gefahrgutzuschlag
- Expressversand

SZABO-SCANDIC Handels GmbH

Quellenstraße 110, A-1100 Wien

T. +43(0)1 489 3961-0

F. +43(0)1 489 3961-7

mail@szabo-scandic.com

www.szabo-scandic.com

[linkedin.com/company/szaboscandic](https://www.linkedin.com/company/szaboscandic)



Datasheet for 610-4520

Mouse IgG (H&L) Antibody Alkaline Phosphatase Conjugated Pre-Adsorbed

Overview

Description:	Rabbit Anti-Mouse IgG (H&L) Antibody Alkaline Phosphatase Conjugated (Min X Human Serum Proteins) - 610-4520
Item No.:	610-4520
Size:	1 mg
Applications:	ELISA, WB
Reactivity:	Mouse
Host Species:	Rabbit

Product Details

Background:	Anti-Mouse IgG Antibody generated in rabbit detects reactivity to Mouse IgG. Secreted as part of the adaptive immune response by plasma B cells, immunoglobulin G constitutes 75% of serum immunoglobulins. Immunoglobulin G binds to viruses, bacteria, as well as fungi and facilitates their destruction or neutralization via agglutination (and thereby immobilizing them), activation of the complement cascade, and opsonization for phagocytosis. The whole IgG molecule possesses both the F(c) region, recognized by high-affinity Fc receptor proteins, as well as the F(ab) region possessing the epitope-recognition site. Both the Heavy and Light chains of the antibody molecule are present. Secondary Antibodies are available in a variety of formats and conjugate types. When choosing a secondary antibody product, consideration must be given to species and immunoglobulin specificity, conjugate type, fragment and chain specificity, level of cross-reactivity, and host-species source and fragment composition.
Synonyms:	rabbit anti-Mouse IgG Antibody alkaline phosphatase conjugation, rabbit anti-Mouse IgG alk phos conjugated Antibody
Host Species:	Rabbit
Specificity:	IgG (H&L)
Conjugate:	Alkaline Phosphatase (AP)
Clonality:	Polyclonal
Format:	IgG

Target Details

Reactivity:	Mouse
Immunogen:	Mouse IgG whole molecule
Purity/Specificity:	This product was prepared from monospecific antiserum by immunoaffinity chromatography using Mouse IgG coupled to agarose followed by solid phase adsorption to remove unwanted reactivities and extensive dialysis against the buffer stated above. Assay by immunoelectrophoresis resulted in a single precipitin arc against anti-Alkaline Phosphatase (calf intestine), anti-Rabbit Serum, Mouse IgG and Mouse Serum. No reactivity was observed against Human serum proteins.

Application Details

Tested Applications:	ELISA, WB
Application Note:	Anti-Mouse IgG Alkaline Phosphatase conjugate has been tested by ELISA and western blot and is suitable for immunoblotting (western or dot blot), ELISA, immunoelectron microscopy and immunohistochemistry as well as other antibody-based enzymatic assays requiring lot-to-lot consistency.
Assay Dilutions:	All assays should be optimized by the user. Recommended dilutions (if any) may be listed below.
ELISA:	1:9,800
IHC:	1:100 - 1:500
WB:	1:500 - 1:2,000

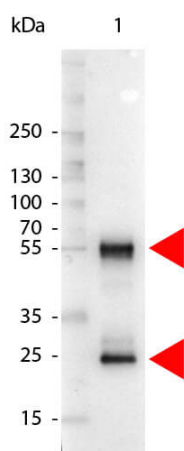
Formulation

Physical State:	Liquid (sterile filtered)
Concentration:	1.0 mg/mL by UV absorbance at 280 nm
Buffer:	0.05 M Tris Chloride, 0.15M Sodium Chloride, 0.001M Magnesium Chloride, 0.0001M Zinc Chloride, 50% (v/v) Glycerol; pH 8.0
Preservative:	0.01% (w/v) Sodium Azide
Stabilizer:	10 mg/mL Bovine Serum Albumin (BSA) - Immunoglobulin and Protease free

Shipping & Handling

Shipping Condition:	Wet Ice
Storage Condition:	Store vial at 4° C before opening. DO NOT FREEZE. This product is stable at 4° C as an undiluted liquid. Dilute only prior to immediate use. Freezing alkaline phosphatase conjugates will result in a substantial loss of enzymatic activity.
Expiration:	Expiration date is one (1) year from date of receipt.

Images



Western Blot

Western Blot of Alkaline Phosphatase Conjugated Rabbit anti-Mouse IgG antibody. Lane 1: Mouse IgG. Lane 2: none. Load: 100 ng per lane. Primary antibody: none. Secondary antibody: Alkaline Phosphatase mouse secondary antibody at 1:1,000 for 60 min at RT. Block: MB-070 for 30 min RT. Predicted/Observed size: 55 kDa, 28 kDa for Mouse IgG. Other band(s): none.

Disclaimer

This product is for research use only and is not intended for therapeutic or diagnostic applications. Please contact a technical service representative for more information. All products of animal origin manufactured by Rockland Immunochemicals are derived from starting materials of North American origin. Collection was performed in United States Department of Agriculture (USDA) inspected facilities and all materials have been inspected and certified to be free of disease and suitable for exportation. All properties listed are typical characteristics and are not specifications. All suggestions and data are offered in good faith but without guarantee as conditions and methods of use of our products are beyond our control. All claims must be made within 30 days following the date of delivery. The prospective user must determine the suitability of our materials before adopting them on a commercial scale. Suggested uses of our products are not recommendations to use our products in violation of any patent or as a license under any patent of Rockland Immunochemicals, Inc. If you require a commercial license to use this material and do not have one, then return this material, unopened to: Rockland Inc., P.O. BOX 5199, Limerick, Pennsylvania, USA.