



SZABO SCANDIC

Part of Europa Biosite

Produktinformation



Forschungsprodukte & Biochemikalien



Zellkultur & Verbrauchsmaterial



Diagnostik & molekulare Diagnostik



Laborgeräte & Service

Weitere Information auf den folgenden Seiten!
See the following pages for more information!



Lieferung & Zahlungsart

siehe unsere [Liefer- und Versandbedingungen](#)

Zuschläge

- Mindermengenzuschlag
- Trockeneiszuschlag
- Gefahrgutzuschlag
- Expressversand

SZABO-SCANDIC HandelsgmbH

Quellenstraße 110, A-1100 Wien

T. +43(0)1 489 3961-0

F. +43(0)1 489 3961-7

mail@szabo-scandic.com

www.szabo-scandic.com

[linkedin.com/company/szaboscandic](https://www.linkedin.com/company/szaboscandic) 

Datasheet for 610-4540

Mouse IgG1 Secondary Antibody Alkaline Phosphatase Conjugated**Overview**

Description:	Rabbit Anti-Mouse IgG1 (Gamma 1 chain) Antibody Alkaline Phosphatase Conjugated - 610-4540
Item No.:	610-4540
Size:	1 mg
Applications:	Dot Blot, ELISA, WB
Reactivity:	Mouse
Host Species:	Rabbit

Product Details

Background:	Anti-Mouse IgG1 Alkaline Phosphatase Antibody generated in rabbit detects reactivity to Mouse IgG1 (Gamma 1 chain). Secreted as part of the adaptive immune response by plasma B cells, immunoglobulin G constitutes 75% of serum immunoglobulins. IgG1 chain constitutes 66% of the IgG subclass and has a high affinity for binding to the Fc receptor of phagocytic cells. Secondary Antibodies are available in a variety of formats and conjugate types. When choosing a secondary antibody product, consideration must be given to species and immunoglobulin specificity, conjugate type, fragment and chain specificity, level of cross-reactivity, and host-species source and fragment composition.
Synonyms:	Rabbit Anti-Mouse IgG1 (Gamma 1 chain) Antibody alkaline phosphatase Conjugation, Rabbit Anti-Mouse IgG1 alk phos Conjugated Antibody
Host Species:	Rabbit
Specificity:	IgG1
Conjugate:	Alkaline Phosphatase (AP)
Clonality:	Polyclonal
Format:	IgG

Target Details

Reactivity:	Mouse
Immunogen:	Mouse IgG1 heavy chain

Purity/Specificity:	IgG1 antibody was prepared from monospecific antiserum by immunoaffinity chromatography using antigens coupled to agarose beads followed by solid phase adsorption(s) to remove any unwanted reactivities. Assay by immunoelectrophoresis resulted in a single precipitin arc against anti-Alkaline Phosphatase (calf intestine) and anti-Rabbit Serum. Specificity was confirmed by ELISA at less than 1% cross reactivity against other mouse heavy or light chain isotypes.
----------------------------	--

Application Details

Tested Applications:	Dot Blot, ELISA, WB
Application Note:	Anti-Mouse IgG1 Alkaline Phosphatase Antibody has been tested by ELISA, dot blot, and western blot and is suitable for ELISA, Immunohistochemistry western blotting as well as other anti IgG1 antibody based assays.
Assay Dilutions:	All assays should be optimized by the user. Recommended dilutions (if any) may be listed below.
ELISA:	1:5,000
IHC:	1:200 - 1:1,000
WB:	1:500 - 1:2,500

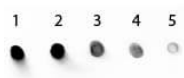
Formulation

Physical State:	Liquid (sterile filtered)
Concentration:	1.0 mg/mL by UV absorbance at 280 nm
Buffer:	0.05 M Tris Chloride, 0.15M Sodium Chloride, 0.001M Magnesium Chloride, 0.0001M Zinc Chloride, 50% (v/v) Glycerol; pH 8.0
Preservative:	0.01% (w/v) Sodium Azide
Stabilizer:	10 mg/mL Bovine Serum Albumin (BSA) - Immunoglobulin and Protease free

Shipping & Handling

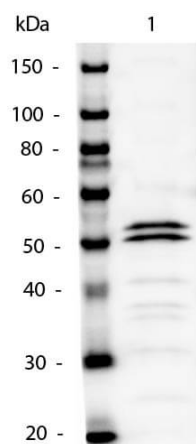
Shipping Condition:	Wet Ice
Storage Condition:	Store vial at 4° C before opening. DO NOT FREEZE. This product is stable at 4° C as an undiluted liquid. Dilute only prior to immediate use. Freezing alkaline phosphatase conjugates will result in a substantial loss of enzymatic activity.
Expiration:	Expiration date is one (1) year from date of receipt.

Images



Dot Blot

Dot Blot of Mouse IgG1 Secondary Antibody Alkaline Phosphatase Conjugated. Antigen: Mouse IgG1. Load: Lane 1 - 200ng Lane 2 - 66.7ng Lane 3 - 22.2ng Lane 4 - 7.4ng Lane 5 - 2.5ng. Primary antibody: none. Secondary antibody: Mouse IgG1 Secondary Antibody Alkaline Phosphatase Conjugated at 1:1,000 for one hour at RT. Block: MB-070 for 60 min at RT. Reaction visualized using alkaline phosphatase substrate for 30 seconds at RT.



Western Blot

Western Blot of Mouse IgG1 Secondary Antibody Alkaline Phosphatase Conjugated. Lane 1: Mouse IgG1. Lane 2: none. Load: 50ng per lane. Primary antibody: none. Secondary antibody: Mouse IgG1 Secondary Antibody Alkaline Phosphatase Conjugated at 1:1,000 o/n at 4°C. Block: MB-070 for 30 min at RT. Reaction visualized using alkaline phosphatase substrate for 30 seconds. Predicted/Observed size: 55 kDa for Mouse IgG1.

References

- Ahmed N et al. Toxoplasma Co-infection Prevents Th2 Differentiation and Leads to a Helminth-Specific Th1 Response. *Front Cell Infect Microbiol.* (2017)

Disclaimer

This product is for research use only and is not intended for therapeutic or diagnostic applications. Please contact a technical service representative for more information. All products of animal origin manufactured by Rockland Immunochemicals are derived from starting materials of North American origin. Collection was performed in United States Department of Agriculture (USDA) inspected facilities and all materials have been inspected and certified to be free of disease and suitable for exportation. All properties listed are typical characteristics and are not specifications. All suggestions and data are offered in good faith but without guarantee as conditions and methods of use of our products are beyond our control. All claims must be made within 30 days following the date of delivery. The prospective user must determine the suitability of our materials before adopting them on a commercial scale. Suggested uses of our products are not recommendations to use our products in violation of any patent or as a license under any patent of Rockland Immunochemicals, Inc. If you require a commercial license to use this material and do not have one, then return this material, unopened to: Rockland Inc., P.O. BOX 5199, Limerick, Pennsylvania, USA.