



SZABO SCANDIC

Part of Europa Biosite

Produktinformation



Forschungsprodukte & Biochemikalien



Zellkultur & Verbrauchsmaterial



Diagnostik & molekulare Diagnostik



Laborgeräte & Service

Weitere Information auf den folgenden Seiten!
See the following pages for more information!



Lieferung & Zahlungsart

siehe unsere [Liefer- und Versandbedingungen](#)

Zuschläge

- Mindermengenzuschlag
- Trockeneiszuschlag
- Gefahrgutzuschlag
- Expressversand

SZABO-SCANDIC Handels GmbH

Quellenstraße 110, A-1100 Wien

T. +43(0)1 489 3961-0

F. +43(0)1 489 3961-7

mail@szabo-scandic.com

www.szabo-scandic.com

[linkedin.com/company/szaboscandic](https://www.linkedin.com/company/szaboscandic)



Datasheet for 611-108-122**Rabbit IgG (H&L) Antibody Phycoerythrin conjugated Pre-Adsorbed****Overview**

Description:	Goat Anti-Rabbit IgG (H&L) Antibody Phycoerythrin Conjugated (Min X Bv Ch Gt GP Ham Hs Hu Ms Rt & Sh Serum Proteins) - 611-108-122
Item No.:	611-108-122
Size:	1 mL
Applications:	WB, IF
Reactivity:	Rabbit
Host Species:	Goat

Product Details

Background:	Anti-Rabbit IgG (H&L) phycoerythrin conjugated antibody generated in goat detects specifically rabbit IgG. This secondary phycoerythrin conjugated antibody anti-Rabbit is ideal for investigators who routinely perform titration assays, microscopy and FACS analysis.
Synonyms:	goat anti-Rabbit IgG Antibody, Gt-a-Rabbit Phycoerythrin conjugated, Rabbit IgG (H&L) Antibody in goat, Goat IgG (H&L) Phycoerythrin conjugated Secondary Antibody.
Host Species:	Goat
Specificity:	IgG (H&L)
Conjugate:	R-Phycoerythrin (RPE)
Clonality:	Polyclonal
Format:	IgG

Target Details

Reactivity:	Rabbit
Immunogen Type:	Native Protein
Immunogen:	Anti-Rabbit IgG was produced by repeated immunization with rabbit IgG whole molecule in goat.

Purity/Specificity:	Rabbit IgG (H&L) Antibody Phycoerythrin conjugated Pre-Adsorbed was prepared from monospecific antiserum by immunoaffinity chromatography using Rabbit IgG coupled to agarose beads followed by solid phase adsorption(s) to remove any unwanted reactivities, conjugation to phycoerythrin and subsequent purification, and extensive dialysis against the buffer stated above. Assay by immunoelectrophoresis resulted in a single precipitin arc against anti-Phycoerythrin, anti-Goat Serum, Rabbit IgG and Rabbit Serum. No reaction was observed against Bovine, Chicken, Goat, Guinea Pig, Hamster, Horse, Human, Mouse, Rat and Sheep Serum Proteins.
----------------------------	---

Application Details

Tested Applications:	WB
Suggested Applications:	IF (Based on references)
Application Note:	Anti-Rabbit IgG (H&L) Phycoerythrin Antibody has been tested by western blot and is suitable for immunomicroscopy and flow cytometry or FACS analysis as well as other antibody based fluorescent assays requiring extremely low background levels, absence of F(c) mediated binding, lot-to-lot consistency, high titer and specificity. The maximum amount of reagent required to stain 1×10^6 cells in flow cytometry is approximately 1.0 μ g of antibody conjugate. Lesser amounts of reagent may be sufficient for staining. Optimal titers for other applications should be determined by the researcher. As a general guideline dilutions of 1:100 to 1:250 should be suitable for most applications.
Assay Dilutions:	All assays should be optimized by the user. Recommended dilutions (if any) may be listed below.
FC:	1:100 - 1:250
IF:	1:100 - 1:250

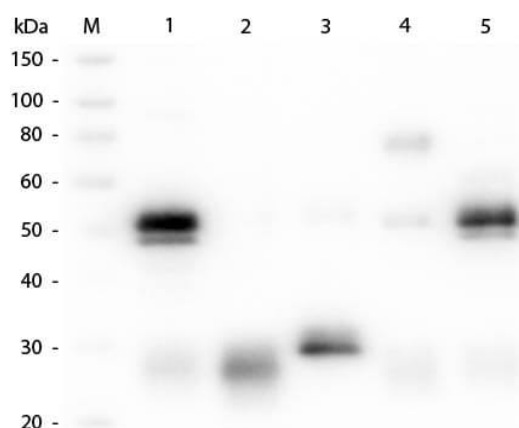
Formulation

Physical State:	Lyophilized
Concentration:	0.5 mg/mL by absorbance = 82.0 at 565 nm
Buffer:	0.02 M Potassium Phosphate, 0.15 M Sodium Chloride, pH 7.2
Preservative:	0.01% (w/v) Sodium Azide
Stabilizer:	10 mg/mL Bovine Serum Albumin (BSA) - Immunoglobulin and Protease free
Reconstitution Volume:	1.0 mL
Reconstitution Buffer:	Restore with deionized water (or equivalent)

Shipping & Handling

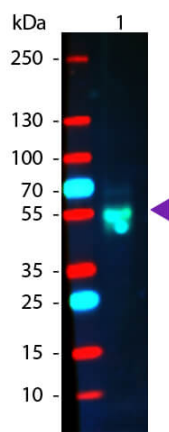
Shipping Condition:	Ambient
Storage Condition:	Store vial at 4° C prior to restoration. Restore with deionized water (or equivalent). This product is stable at 4° C as an undiluted liquid. Dilute only prior to immediate use. Centrifuge product if not completely clear after standing at room temperature. Do not freeze after reconstitution. Store reagent in the dark. Use subdued lighting during handling and incubation of cells prior to analysis.
Expiration:	Expiration date is one (1) year from date of receipt.

Images



Western Blot

Western Blot of Unconjugated Anti-Rabbit IgG (H&L) (GOAT) Antibody (Min X Bv, Ch, Gt, GP, Ham, Hs, Hu, Ms, Rt & Sh Serum Proteins) (p/n 611-101-122). Lane M: 3 µl Molecular Ladder. Lane 1: Rabbit IgG whole molecule (p/n 011-0102). Lane 2: Rabbit IgG F(ab) Fragment (p/n 011-0105). Lane 3: Rabbit IgG F(c) Fragment (p/n 010-0103). Lane 4: Rabbit IgM Whole Molecule (p/n 011-0107). Lane 5: Normal Rabbit Serum (p/n B309). All samples were reduced. Load: 50 ng per lane. Block: MB-070 for 30 min at RT. Primary Antibody: Anti-Rabbit IgG (H&L) (GOAT) Antibody (Min X Bv, Ch, Gt, GP, Ham, Hs, Hu, Ms, Rt & Sh Serum Proteins) (p/n 611-101-122) 1:1,000 for 60 min at RT. Secondary antibody: Anti-Goat IgG (DONKEY) Peroxidase Conjugated Antibody (p/n CUST10) 1:40,000 in MB-070 for 30 min at RT. Predicted/Observed Size: 25 and 50 kDa for Rabbit IgG and Serum, 25 kDa for F(c) and F(ab), 70 and 23 kDa for IgM. Rabbit F(c) migrates slightly higher.



Western Blot

Western Blot of Goat anti-Rabbit IgG Pre-Absorbed
 Phycoerythrin Conjugated Antibody. Lane 1: Rabbit IgG.
 Lane 2: None. Load: 50 ng per lane. Primary antibody:
 None. Secondary antibody: Phycoerythrin goat secondary
 antibody at 1:1,000 for 60 min at RT. Block: MB-070 for 30
 min at RT. Predicted/Observed size: 28 & 55 kDa, 55 kDa for
 Rabbit IgG. Other band(s): None.

References

- Murillo-Pineda M et al. Induction of spontaneous human neocentromere formation and long-term maturation. *J Cell Biol.* (2021)
- Yasunaga S et al. Scmh1 has E3 ubiquitin ligase activity for geminin and histone H2A and regulates geminin stability directly or indirectly via transcriptional repression of Hoxa9 and Hoxb4. *Mol Cell Biol.* (2013)

Disclaimer

This product is for research use only and is not intended for therapeutic or diagnostic applications. Please contact a technical service representative for more information. All products of animal origin manufactured by Rockland Immunochemicals are derived from starting materials of North American origin. Collection was performed in United States Department of Agriculture (USDA) inspected facilities and all materials have been inspected and certified to be free of disease and suitable for exportation. All properties listed are typical characteristics and are not specifications. All suggestions and data are offered in good faith but without guarantee as conditions and methods of use of our products are beyond our control. All claims must be made within 30 days following the date of delivery. The prospective user must determine the suitability of our materials before adopting them on a commercial scale. Suggested uses of our products are not recommendations to use our products in violation of any patent or as a license under any patent of Rockland Immunochemicals, Inc. If you require a commercial license to use this material and do not have one, then return this material, unopened to: Rockland Inc., P.O. BOX 5199, Limerick, Pennsylvania, USA.