



SZABO SCANDIC

Part of Europa Biosite

Produktinformation



Forschungsprodukte & Biochemikalien



Zellkultur & Verbrauchsmaterial



Diagnostik & molekulare Diagnostik



Laborgeräte & Service

Weitere Information auf den folgenden Seiten!
See the following pages for more information!



Lieferung & Zahlungsart

siehe unsere [Liefer- und Versandbedingungen](#)

Zuschläge

- Mindermengenzuschlag
- Trockeneiszuschlag
- Gefahrgutzuschlag
- Expressversand

SZABO-SCANDIC HandelsgmbH

Quellenstraße 110, A-1100 Wien

T. +43(0)1 489 3961-0

F. +43(0)1 489 3961-7

mail@szabo-scandic.com

www.szabo-scandic.com

[linkedin.com/company/szaboscandic](https://www.linkedin.com/company/szaboscandic)



Datasheet for 611-1202**Rabbit IgG (H&L) Secondary Antibody Fluorescein Conjugated****Overview**

Description:	Goat Anti-Rabbit IgG (H&L) Antibody Fluorescein Conjugated - 611-1202
Item No.:	611-1202
Size:	2 mg
Applications:	Dot Blot, WB, FC, IF, IHC, Multiplex
Reactivity:	Rabbit
Host Species:	Goat

Product Details

Background:	Anti-Rabbit IgG Antibody Fluorescein generated in goat detects rabbit IgG. Secreted as part of the adaptive immune response by plasma B cells, immunoglobulin G constitutes 75% of serum immunoglobulins. Immunoglobulin G binds to viruses, bacteria, as well as fungi and facilitates their destruction or neutralization via agglutination (and thereby immobilizing them), activation of the complement cascade, and opsonization for phagocytosis. The whole IgG molecule possesses both the F(c) region, recognized by high-affinity Fc receptor proteins, as well as the F(ab) region possessing the epitope-recognition site. Both heavy and light chains of the antibody molecule are present. Secondary Antibodies are available in a variety of formats and conjugate types. When choosing a secondary antibody product, consideration must be given to species and immunoglobulin specificity, conjugate type, fragment and chain specificity, level of cross-reactivity, and host-species source and fragment composition. This Anti-Rabbit IgG (H&L) is conjugated to Fluorescein.
Synonyms:	Goat anti-Rabbit IgG Antibody fluorescein Conjugation, Goat anti-Rabbit IgG FITC Conjugated Antibody
Host Species:	Goat
Specificity:	IgG (H&L)
Conjugate:	Fluorescein (FITC)
Clonality:	Polyclonal
Format:	IgG
F/P Ratio:	3.97
Specific Activity:	4.07

Target Details

Reactivity:	Rabbit
Immunogen:	Rabbit IgG whole molecule
Purity/Specificity:	This product was prepared from monospecific antiserum by immunoaffinity chromatography using Rabbit IgG coupled to agarose beads followed by solid phase adsorption(s) to remove any unwanted reactivities. Assay by immunoelectrophoresis resulted in a single precipitin arc against anti-Fluorescein, anti-Goat Serum, Rabbit IgG and Rabbit Serum.

Application Details

Tested Applications:	Dot Blot, WB
Suggested Applications:	FC, IF, IHC, Multiplex (Based on references)
Application Note:	Anti-Rabbit IgG Antibody Fluorescein has been tested by dot blot and western blot and is designed for immunofluorescence microscopy, fluorescence based plate assays (FLISA) and fluorescent western blotting. This product is also suitable for multiplex analysis, including multicolor imaging, utilizing various commercial platforms.
Assay Dilutions:	All assays should be optimized by the user. Recommended dilutions (if any) may be listed below.
FC:	1:500 - 1:2,500
FLISA:	1:10,000 - 1:50,000
IF:	1:1,000 - 1:5,000

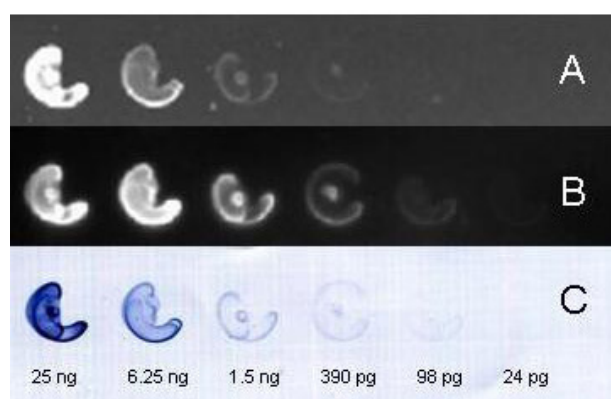
Formulation

Physical State:	Lyophilized
Concentration:	2.0 mg/mL by UV absorbance at 280 nm
Buffer:	0.02 M Potassium Phosphate, 0.15 M Sodium Chloride, pH 7.2
Preservative:	0.01% (w/v) Sodium Azide
Stabilizer:	10 mg/mL Bovine Serum Albumin (BSA) - Immunoglobulin and Protease free
Reconstitution Volume:	1.0 mL
Reconstitution Buffer:	Restore with deionized water (or equivalent)

Shipping & Handling

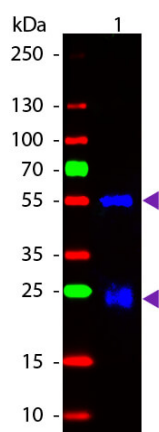
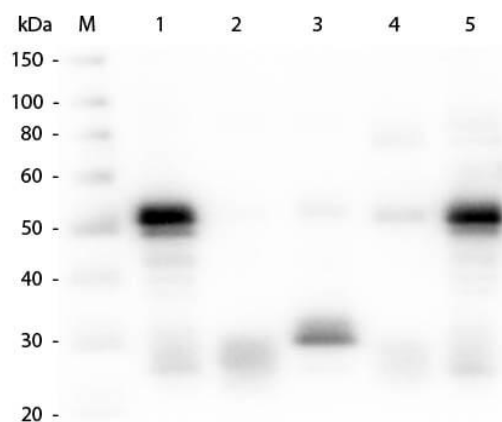
Shipping Condition:	Ambient
Storage Condition:	Store vial at 4° C prior to restoration. For extended storage aliquot contents and freeze at -20° C or below. Avoid cycles of freezing and thawing. Centrifuge product if not completely clear after standing at room temperature. This product is stable for several weeks at 4° C as an undiluted liquid. Dilute only prior to immediate use.
Expiration:	Expiration date is one (1) year from date of receipt.

Images



Dot Blot

Rockland FITC (fluorescein) and HRP (horse radish peroxidase) conjugated secondary antibody was used to detect nanogram – picogram levels of rabbit IgG by dot blot on nitrocellulose membrane. 4 ul each of serial 1 in 4 dilutions of rabbit IgG were dotted on nitrocellulose and allowed to dry. Membrane was blocked in 3% BSA for 10 minutes dried for later use and rewetted with MB-070. Blot was incubated in Rockland fluorescein conjugated goat anti rabbit 611-1202 lot 25176 1:10,000 and Rockland HRP conjugated goat anti Rabbit 611-1302 lot 25406 1:10,000, dried and: A. Blot was imaged on the BioRad VersaDoc with filter settings appropriate for Fluorescein/DyLight 488. B. Blot was rewetted with TBS, incubated with FEMTOMAX chemiluminescent substrate for 1-3 minutes and imaged for 60sec on the BioRad VersaDoc Imaging System. C. Blot was rinsed with TBS and DIH₂O, incubated for 5 minutes with Rockland TMB Substrate for Western Blot MaxTag (1 ml of TMBM-102 + ~9 ml of TMBM-101), dried overnight and imaged using a conventional flatbed scanner.



Western Blot

Western Blot of Anti-Rabbit IgG (H&L) (GOAT) Antibody (p/n 611-1102). Lane M: 3 μ l Molecular Ladder. Lane 1: Rabbit IgG whole molecule (p/n 011-0102). Lane 2: Rabbit IgG F(ab) Fragment (p/n 011-0105). Lane 3: Rabbit IgG F(c) Fragment (p/n 010-0103). Lane 4: Rabbit IgM Whole Molecule (p/n 011-0107). Lane 5: Normal Rabbit Serum (p/n B309). All samples were reduced. Load: 50 ng per lane. Block: MB-070 for 30 min at RT. Primary Antibody: Anti-Rabbit IgG (H&L) (GOAT) Antibody (p/n 611-1102) 1:1,000 for 60 min at RT. Secondary antibody: Anti-Goat IgG (DONKEY) Peroxidase Conjugated Antibody (p/n CUST10) 1:40,000 in MB-070 for 30 min at RT. Predicted/Observed Size: 25 and 50 kDa for Rabbit IgG and Serum, 25 kDa for F(c) and F(ab), 70 and 23 kDa for IgM. Rabbit F(c) migrates slightly higher.

Western Blot

Western blot of Fluorescein conjugated Goat Anti-Rabbit IgG secondary antibody. Lane 1: Rabbit IgG. Load: 50 ng per lane. Primary antibody: None. Secondary antibody: Fluorescein goat secondary antibody at 1:1,000 for 60 min at RT. Blocking: MB-070 for 30 min at RT. Predicted/Observed size: 25 & 55 kDa, 25 & 55 kDa for Rabbit IgG. Other band(s): None.

References

- Hasanpour S et al. The effect of Activin pathway modulation on the expression of both pluripotency and differentiation markers during early zebrafish development compared with other vertebrates. *J Exp Zool B Mol Dev Evol.* (2021)
- Gupta P et al. Bioresorbable silk grafts for small diameter vascular tissue engineering applications: In vitro and in vivo functional analysis. *Acta Biomater.* (2020)
- Wang Y. et al. Exogenous spermine attenuates rat diabetic cardiomyopathy via suppressing ROS-p53 mediated downregulation of calcium-sensitive receptor. *Redox Biol.* (2020)
- Cao BB, Zhang XX, Du CY, Liu Z, Qiu YH, Peng YP. TGF- β 1 Provides Neuroprotection via Inhibition of Microglial Activation in 3-Acetylpyridine-Induced Cerebellar Ataxia Model Rats. *Front Neurosci.* (2020)
- Li et al. Sesquiterpene lactone 6-O-angeloylplenolin reverses vincristine resistance by inhibiting YB-1 nuclear translocation in colon carcinoma cells. *Oncology Letters* (2018)
- Cuoghi I et al. Immunohistochemical analysis of the distribution of molecules involved in ionic and pH regulation in the lancelet *Branchiostoma floridae* (Hubbs, 1922). *Acta Histochem.* (2018)
- Haskett DG et al. An exploratory study on the preparation and evaluation of a “same-day” adipose stem cell–based tissue-engineered vascular graft. *J Thorac Cardiovasc Surg.* (2018)
- Vitacolonna M et al. In-vivo quantification of the revascularization of a human acellular dermis seeded with EPCs and MSCs in co-culture with fibroblasts and pericytes in the dorsal chamber model in pre-irradiated tissue. *Cell Tissue Bank.* (2017)
- Krawiec et al. Evaluation of the stromal vascular fraction of adipose tissue as the basis for a stem cell-based tissue-engineered vascular graft. *Journal of Vascular Surgery* (2017)
- Xu et al. Lefty1 alleviates renal tubulointerstitial injury in mice with unilateral ureteral obstruction. *Molecular Medicine Reports* (2016)
- Krawiec et al. In Vivo Functional Evaluation of Tissue-Engineered Vascular Grafts Fabricated Using Human Adipose-Derived Stem Cells from High Cardiovascular Risk Populations. *Tissue Engineering - Part A* (2016)

Disclaimer

This product is for research use only and is not intended for therapeutic or diagnostic applications. Please contact a technical service representative for more information. All products of animal origin manufactured by Rockland Immunochemicals are derived from starting materials of North American origin. Collection was performed in United States Department of Agriculture (USDA) inspected facilities and all materials have been inspected and certified to be free of disease and suitable for exportation. All properties listed are typical characteristics and are not specifications. All suggestions and data are offered in good faith but without guarantee as conditions and methods of use of our products are beyond our control. All claims must be made within 30 days following the date of delivery. The prospective user must determine the suitability of our materials before adopting them on a commercial scale. Suggested uses of our products are not recommendations to use our products in violation of any patent or as a license under any patent of Rockland Immunochemicals, Inc. If you require a commercial license to use this material and do not have one, then return this material, unopened to: Rockland Inc., P.O. BOX 5199, Limerick, Pennsylvania, USA.