



# SZABO SCANDIC

Part of Europa Biosite

## Produktinformation



Forschungsprodukte & Biochemikalien



Zellkultur & Verbrauchsmaterial



Diagnostik & molekulare Diagnostik



Laborgeräte & Service

Weitere Information auf den folgenden Seiten!  
See the following pages for more information!



### Lieferung & Zahlungsart

siehe unsere [Liefer- und Versandbedingungen](#)

### Zuschläge

- Mindermengenzuschlag
- Trockeneiszuschlag
- Gefahrgutzuschlag
- Expressversand

### SZABO-SCANDIC HandelsgmbH

Quellenstraße 110, A-1100 Wien

T. +43(0)1 489 3961-0

F. +43(0)1 489 3961-7

[mail@szabo-scandic.com](mailto:mail@szabo-scandic.com)

[www.szabo-scandic.com](http://www.szabo-scandic.com)

[linkedin.com/company/szaboscandic](https://www.linkedin.com/company/szaboscandic) 

## Datasheet for 611-144-122

# Rabbit IgG (H&L) Antibody DyLight™ 680 Conjugated Pre-Adsorbed

## Overview

<b>Description:</b>	Goat Anti-Rabbit IgG (H&L) Antibody DyLight™ 680 Conjugated (Min X Bv Ch Gt GP Ham Hs Hu Ms Rt & Sh Serum Proteins) - 611-144-122
<b>Item No.:</b>	611-144-122
<b>Size:</b>	100 µg
<b>Applications:</b>	Dot Blot, FISH, Multiplex, WB
<b>Reactivity:</b>	Rabbit
<b>Host Species:</b>	Goat

## Product Details

<b>Background:</b>	Anti-Rabbit IgG Antibody DyLight™680 generated in goat detects rabbit IgG. Secreted as part of the adaptive immune response by plasma B cells, immunoglobulin G constitutes 75% of serum immunoglobulins. Immunoglobulin G binds to viruses, bacteria, as well as fungi and facilitates their destruction or neutralization via agglutination (and thereby immobilizing them), activation of the compliment cascade, and opsonization for phagocytosis. The whole IgG molecule possesses both the F(c) region, recognized by high-affinity Fc receptor proteins, as well as the F(ab) region possessing the epitope-recognition site. Both heavy and light chains of the antibody molecule are present. Secondary Antibodies are available in a variety of formats and conjugate types. When choosing a secondary antibody product, consideration must be given to species and immunoglobulin specificity, conjugate type, fragment and chain specificity, level of cross-reactivity, and host-species source and fragment composition. This Anti-Rabbit IgG (H&L) is conjugated to DyLight™680.
<b>Synonyms:</b>	Goat Anti-Rabbit IgG Antibody DyLight 680™ Conjugated, Goat Anti Rabbit IgG DyLight 680™ Conjugated Antibody
<b>Host Species:</b>	Goat
<b>Specificity:</b>	IgG (H&L)
<b>Conjugate:</b>	DyLight™ 680
<b>Clonality:</b>	Polyclonal
<b>Format:</b>	IgG
<b>F/P Ratio:</b>	2.8

## Target Details

<b>Reactivity:</b>	Rabbit
<b>Immunogen:</b>	Rabbit IgG whole molecule
<b>Purity/Specificity:</b>	This product was prepared from monospecific antiserum by immunoaffinity chromatography using Rabbit IgG coupled to agarose beads followed by solid phase adsorption(s) to remove any unwanted reactivities. Assay by immunoelectrophoresis resulted in a single precipitin arc against anti-Goat Serum, Rabbit IgG and Rabbit Serum. No reaction was observed against Bovine, Chicken, Goat, Guinea Pig, Hamster, Horse, Human, Mouse, Rat and Sheep Serum Proteins. This antibody will react with heavy chains of rabbit IgG and with light chains of most rabbit immunoglobulins.

## Application Details

<b>Tested Applications:</b>	Dot Blot
<b>Suggested Applications:</b>	FISH, Multiplex, WB (Based on references)
<b>Application Note:</b>	Anti-Rabbit IgG Antibody DyLight™680 has been tested by dot blot and is designed for immunofluorescence microscopy, fluorescence based plate assays (FLISA) and fluorescent western blotting. This product is also suitable for multiplex analysis, including multicolor imaging, utilizing various commercial platforms. The emission spectra for this DyLight™ conjugate match the principle output wavelengths of most common fluorescence instrumentation.
<b>Assay Dilutions:</b>	All assays should be optimized by the user. Recommended dilutions (if any) may be listed below.
<b>FLISA:</b>	>1:20,000
<b>IF:</b>	>1:5,000
<b>WB:</b>	>1:10,000

## Formulation

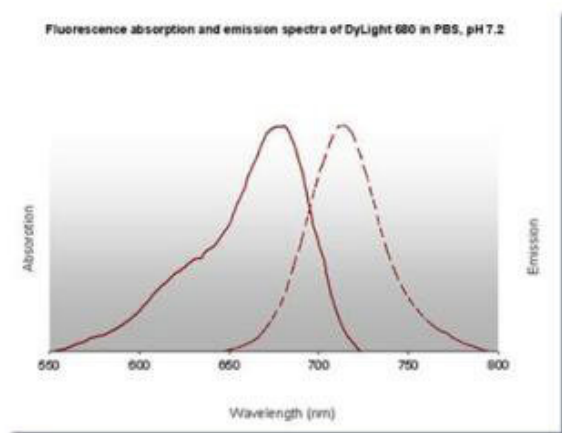
<b>Physical State:</b>	Lyophilized
<b>Concentration:</b>	1.0 mg/mL by UV absorbance at 280 nm
<b>Buffer:</b>	0.02 M Potassium Phosphate, 0.15 M Sodium Chloride, pH 7.2
<b>Preservative:</b>	0.01% (w/v) Sodium Azide
<b>Stabilizer:</b>	10 mg/mL Bovine Serum Albumin (BSA) - Immunoglobulin and Protease free

<b>Reconstitution Volume:</b>	100 $\mu$ L
<b>Reconstitution Buffer:</b>	Restore with deionized water (or equivalent)

## Shipping & Handling

<b>Shipping Condition:</b>	Ambient
<b>Storage Condition:</b>	Store vial at 4° C prior to restoration. For extended storage aliquot contents and freeze at -20° C or below. Avoid cycles of freezing and thawing. Centrifuge product if not completely clear after standing at room temperature. This product is stable for several weeks at 4° C as an undiluted liquid. Dilute only prior to immediate use.
<b>Expiration:</b>	Expiration date is one (1) year from date of receipt.

## Images

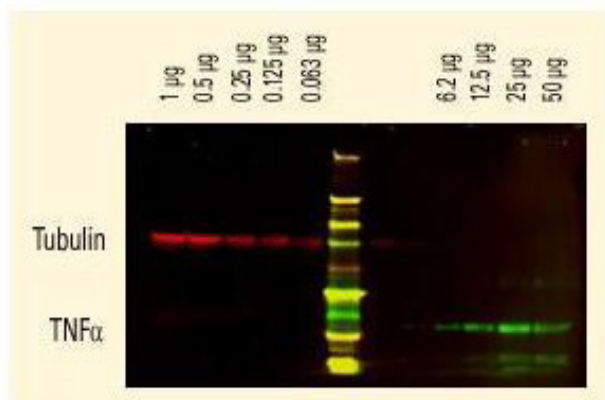


### Diagram







Rabbit IgG (H&L) (Goat) Antibody DyLight™ 680 Conjugated  
(Min X Bv Ch Gt GP Ham Hs Hu Ms Rt & Sh Serum Proteins)

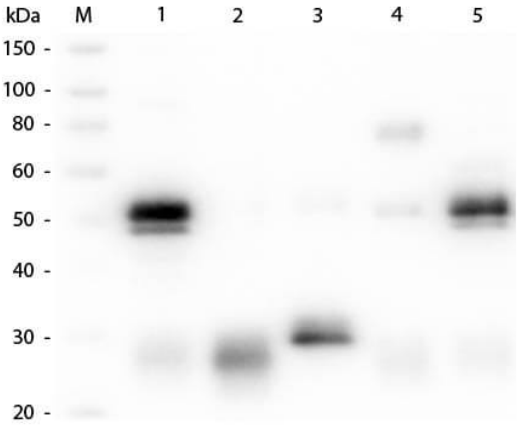
### Western Blot

DyLight™ dyes can be used for two-color Western Blot detection with low background and high signal. Anti-tubulin was detected using a DyLight™ 680 conjugate. Anti-TNF $\alpha$  was detected using a DyLight™ 800 conjugate. The image was captured using the Odyssey® Infrared Imaging System developed by LI-COR.



**Diagram**  
Properties of DyLight™ Conjugates.

Emission	Color	DyLight™ Dye	Ex/Em (nm)	$\epsilon$ (M <sup>-1</sup> cm <sup>-1</sup> )	Similar Dyes
Blue		405	400/420	30,000	Alexa™ 405, Cascade Blue
Green		488	493/518	70,000	Alexa™ 488, Cy2®, FITC
Yellow		549	550/568	150,000	Alexa™ 546, Alexa 555, Cy3®, TRITC
Red		649	646/674	250,000	Alexa™ 647, Cy5®
Near Infrared		680	682/715	140,000	Alexa™ 680, Cy5.5®, IRDye™ 700
Infrared		800	770/794	270,000	IRDye™ 800



**Western Blot**

Western Blot of Unconjugated Anti-Rabbit IgG (H&L) (GOAT) Antibody (Min X Bv, Ch, Gt, GP, Ham, Hs, Hu, Ms, Rt & Sh Serum Proteins) (p/n 611-101-122). Lane M: 3 µl Molecular Ladder. Lane 1: Rabbit IgG whole molecule (p/n 011-0102). Lane 2: Rabbit IgG F(ab) Fragment (p/n 011-0105). Lane 3: Rabbit IgG F(c) Fragment (p/n 010-0103). Lane 4: Rabbit IgM Whole Molecule (p/n 011-0107). Lane 5: Normal Rabbit Serum (p/n B309). All samples were reduced. Load: 50 ng per lane. Block: MB-070 for 30 min at RT. Primary Antibody: Anti-Rabbit IgG (H&L) (GOAT) Antibody (Min X Bv, Ch, Gt, GP, Ham, Hs, Hu, Ms, Rt & Sh Serum Proteins) (p/n 611-101-122) 1:1,000 for 60 min at RT. Secondary antibody: Anti-Goat IgG (DONKEY) Peroxidase Conjugated Antibody (p/n CUST10) 1:40,000 in MB-070 for 30 min at RT. Predicted/Observed Size: 25 and 50 kDa for Rabbit IgG and Serum, 25 kDa for F(c) and F(ab), 70 and 23 kDa for IgM. Rabbit F(c) migrates slightly higher.

**References**

- Grossmann D et al. Mitochondria-Endoplasmic Reticulum Contact Sites Dynamics and Calcium Homeostasis Are Differentially Disrupted in PINK1-PD or PRKN-PD Neurons. *Mov Discord.* (2023)
- White Z et al. Limb-girdle muscular dystrophy type 2B causes HDL-C abnormalities in patients and statin-resistant muscle wasting in dysferlin-deficient mice. *Skelet Muscle.* (2022)
- Tao, X et al. Phenylbutyrate modulates polyamine acetylase and ameliorates Snyder-Robinson syndrome in a Drosophila model and patient cells. *Jci Insight* (2022)
- Woods BL. et al. Interplay of septin amphipathic helices in sensing membrane-curvature and filament bundling. *bioRxiv* (2020)
- Navarro R et al. TGF- $\beta$ -induced IGFBP-3 is a key paracrine factor from activated pericytes that promotes colorectal cancer cell migration and invasion. *Mol Oncol.* (2020)
- Asthana V et al. Development of a Novel Class of Self-Assembling dsRNA Cancer Therapeutics: a Proof of Concept Investigation. *Mol Ther Oncolytics.* (2020)
- Zhang D et al. High iodine effects on the proliferation, apoptosis, and migration of papillary thyroid carcinoma cells as a result of autophagy induced by BRAF kinase. *Biomed Pharmacother.* (2019)
- Bodor DL. et al. Assembly in G1 phase and Long-Term Stability are Unique Intrinsic Features of CENP-Anucleosomes. *Molecular biology of the cell* (2013)
- Chacko AD et al. Voltage dependent anion channel-1 regulates death receptor mediated apoptosis by enabling cleavage of caspase-8. *BMC Cancer.* (2010)

## Disclaimer

This product is for research use only and is not intended for therapeutic or diagnostic applications. Please contact a technical service representative for more information. All products of animal origin manufactured by Rockland Immunochemicals are derived from starting materials of North American origin. Collection was performed in United States Department of Agriculture (USDA) inspected facilities and all materials have been inspected and certified to be free of disease and suitable for exportation. All properties listed are typical characteristics and are not specifications. All suggestions and data are offered in good faith but without guarantee as conditions and methods of use of our products are beyond our control. All claims must be made within 30 days following the date of delivery. The prospective user must determine the suitability of our materials before adopting them on a commercial scale. Suggested uses of our products are not recommendations to use our products in violation of any patent or as a license under any patent of Rockland Immunochemicals, Inc. If you require a commercial license to use this material and do not have one, then return this material, unopened to: Rockland Inc., P.O. BOX 5199, Limerick, Pennsylvania, USA.