



SZABO SCANDIC

Part of Europa Biosite

Produktinformation



Forschungsprodukte & Biochemikalien



Zellkultur & Verbrauchsmaterial



Diagnostik & molekulare Diagnostik



Laborgeräte & Service

Weitere Information auf den folgenden Seiten!
See the following pages for more information!



Lieferung & Zahlungsart

siehe unsere [Liefer- und Versandbedingungen](#)

Zuschläge

- Mindermengenzuschlag
- Trockeneiszuschlag
- Gefahrgutzuschlag
- Expressversand

SZABO-SCANDIC HandelsgmbH

Quellenstraße 110, A-1100 Wien

T. +43(0)1 489 3961-0

F. +43(0)1 489 3961-7

mail@szabo-scandic.com

www.szabo-scandic.com

[linkedin.com/company/szaboscandic](https://www.linkedin.com/company/szaboscandic) 

Datasheet for 611-1623

Rabbit IgG Fc Antibody Biotin Conjugated Pre-Adsorbed**Overview**

Description:	Goat Anti-Rabbit IgG Fc Antibody Biotin Conjugated (Min X Human Serum Proteins) - 611-1623
Item No.:	611-1623
Size:	2 mg
Applications:	ELISA
Reactivity:	Rabbit
Host Species:	Goat

Product Details

Background:	Anti-Rabbit IgG F(c) Biotin antibody generated in goat is a proteolytic fragment of immunoglobulin G (IgG) obtained by limited digestion with the enzyme papain under controlled conditions of temperature, time and pH. Receptors bind the Fc portion of rabbit IgG and often this fragment is removed from immunoglobulins to minimize receptor binding and lower background reactivity. Anti-RABBIT IgG F(c) (GOAT) Antibody is ideal for investigators in Immunology, Cancer, and Microbiology research.
Synonyms:	Goat anti-Rabbit IgG F(c) Antibody biotin Conjugation, Goat anti-Rabbit IgG Fc fragment Antibody biotin Conjugation, Goat anti-Rabbit IgG F(c) BAC Conjugated Antibody
Host Species:	Goat
Specificity:	IgG Fc
Conjugate:	Biotin
Clonality:	Polyclonal
Format:	IgG

Target Details

Reactivity:	Rabbit
Immunogen:	Rabbit IgG F(c) fragment

Purity/Specificity: Anti-RABBIT IgG F(c) (GOAT) was purified from monospecific antiserum by immunoaffinity chromatography using Rabbit IgG coupled to agarose beads followed by solid phase adsorption (s) to remove any unwanted reactivities. Assay by immunoelectrophoresis resulted in a single precipitin arc against anti-biotin, anti-Goat Serum, Rabbit IgG, Rabbit IgG F(c) and Rabbit Serum. No reaction was observed against Rabbit IgG F(ab) or Human Serum Proteins.

Application Details

Tested Applications: ELISA

Application Note: Anti-RABBIT IgG F(c) (GOAT) Biotin antibody has been tested by ELISA and is suitable for immunoblotting (western or dot blot), ELISA, immunoelectron microscopy and immunohistochemistry as well as other antibody based enzymatic assays requiring lot-to-lot consistency.

Assay Dilutions: All assays should be optimized by the user. Recommended dilutions (if any) may be listed below.

ELISA: 1:200,000

IHC: 1:1,000 - 1:5,000

WB: 1:2,000 - 1:10,000

Formulation

Physical State: Lyophilized

Concentration: 2.0 mg/mL by UV absorbance at 280 nm

Buffer: 0.02 M Potassium Phosphate, 0.15 M Sodium Chloride, pH 7.2

Preservative: 0.01% (w/v) Sodium Azide

Stabilizer: 10 mg/mL Bovine Serum Albumin (BSA) - Immunoglobulin and Protease free

Reconstitution Volume: 1.0 mL

Reconstitution Buffer: Restore with deionized water (or equivalent)

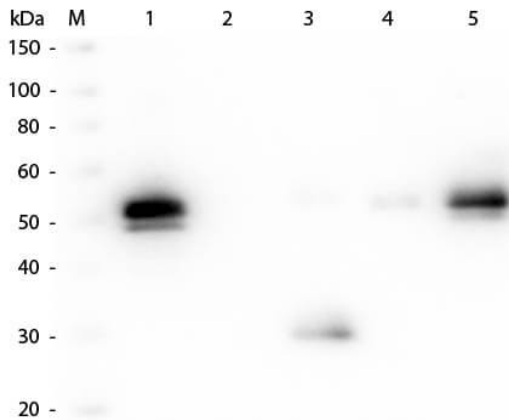
Shipping & Handling

Shipping Condition: Ambient

Storage Condition: Store vial at 4° C prior to restoration. For extended storage aliquot contents and freeze at -20° C or below. Avoid cycles of freezing and thawing. Centrifuge product if not completely clear after standing at room temperature. This product is stable for several weeks at 4° C as an undiluted liquid. Dilute only prior to immediate use.

Expiration: Expiration date is one (1) year from date of receipt.

Images



Western Blot

Western Blot of Anti-Rabbit IgG F(c) (GOAT) Antibody (p/n 611-1103). Lane M: 3 μ l Molecular Ladder. Lane 1: Rabbit IgG whole molecule (p/n 011-0102). Lane 2: Rabbit IgG F(ab) Fragment (p/n 011-0105). Lane 3: Rabbit IgG F(c) Fragment (p/n 010-0103). Lane 4: Rabbit IgM Whole Molecule (p/n 011-0107). Lane 5: Normal Rabbit Serum (p/n B309). All samples were reduced. Load: 50 ng of IgG, F(ab), IgM and Serum, 100 ng of F(c). Block: MB-070 for 30 min at RT. Primary Antibody: Anti-Rabbit IgG F(c) (GOAT) Antibody (p/n 611-1103) 1:2,000 for 60 min at RT. Secondary antibody: Anti-Goat IgG (DONKEY) Peroxidase Conjugated Antibody (p/n CUST10) 1:40,000 in MB-070 for 30 min at RT. Predicted/Observed Size: 25 and 50 kDa for Rabbit IgG and Serum, 25 kDa for F(c) and F(ab), 70 and 23 kDa for IgM. Rabbit F(c) migrates slightly higher.

Disclaimer

This product is for research use only and is not intended for therapeutic or diagnostic applications. Please contact a technical service representative for more information. All products of animal origin manufactured by Rockland Immunochemicals are derived from starting materials of North American origin. Collection was performed in United States Department of Agriculture (USDA) inspected facilities and all materials have been inspected and certified to be free of disease and suitable for exportation. All properties listed are typical characteristics and are not specifications. All suggestions and data are offered in good faith but without guarantee as conditions and methods of use of our products are beyond our control. All claims must be made within 30 days following the date of delivery. The prospective user must determine the suitability of our materials before adopting them on a commercial scale. Suggested uses of our products are not recommendations to use our products in violation of any patent or as a license under any patent of Rockland Immunochemicals, Inc. If you require a commercial license to use this material and do not have one, then return this material, unopened to: Rockland Inc., P.O. BOX 5199, Limerick, Pennsylvania, USA.