



SZABO SCANDIC

Part of Europa Biosite

Produktinformation



Forschungsprodukte & Biochemikalien



Zellkultur & Verbrauchsmaterial



Diagnostik & molekulare Diagnostik



Laborgeräte & Service

Weitere Information auf den folgenden Seiten!
See the following pages for more information!



Lieferung & Zahlungsart

siehe unsere [Liefer- und Versandbedingungen](#)

Zuschläge

- Mindermengenzuschlag
- Trockeneiszuschlag
- Gefahrgutzuschlag
- Expressversand

SZABO-SCANDIC HandelsgmbH

Quellenstraße 110, A-1100 Wien

T. +43(0)1 489 3961-0

F. +43(0)1 489 3961-7

mail@szabo-scandic.com

www.szabo-scandic.com

[linkedin.com/company/szaboscandic](https://www.linkedin.com/company/szaboscandic) 

Datasheet for 611-301-122**Rabbit IgG (H&L) Antibody Pre-adsorbed****Overview**

| | |
|----------------------|--|
| Description: | Mouse Anti-Rabbit IgG (H&L) Antibody (Min X Hu, Gt, Ms Serum Proteins) - 611-301-122 |
| Item No.: | 611-301-122 |
| Size: | 1 mg |
| Applications: | ELISA, WB |
| Reactivity: | Rabbit |
| Host Species: | Mouse |

Product Details

| | |
|----------------------|---|
| Background: | Secondary Antibodies are available in a variety of formats and conjugate types. When choosing a secondary antibody product, consideration must be given to species and immunoglobulin specificity, conjugate type, fragment and chain specificity, level of cross-reactivity, and host-species source and fragment composition. |
| Synonyms: | mouse anti-Rabbit IgG Antibody, mouse anti-Rabbit IgG pre-adsorbed Antibody |
| Host Species: | Mouse |
| Specificity: | IgG (H&L) |
| Clonality: | Polyclonal |
| Format: | IgG |

Target Details

| | |
|------------------------|--|
| Reactivity: | Rabbit |
| Immunogen Type: | Native Protein |
| Immunogen: | Anti-Rabbit IgG (H&L) was produced by repeated immunization with rabbit whole IgG molecule in mouse. |

| | |
|----------------------------|---|
| Purity/Specificity: | This product was prepared from monospecific polyclonal ascites by immunoaffinity chromatography using Rabbit IgG coupled to agarose beads followed by solid phase adsorption (s) to remove any unwanted reactivities. Assay by immunoelectrophoresis resulted in a single precipitin arc against anti-Mouse Serum, Rabbit IgG and Rabbit Serum. No reaction was observed against Goat, Human or Mouse Serum Proteins. |
|----------------------------|---|

Application Details

| | |
|-----------------------------|--|
| Tested Applications: | ELISA, WB |
| Application Note: | Anti-Rabbit IgG (H&L) has been tested by ELISA and western blot and is suitable for use in immunoelectrophoresis, western-blot, competitive western-blot, ELISA and competitive ELISA assays. Specific conditions for reactivity and signal detection should be optimized by the end user. |
| Assay Dilutions: | All assays should be optimized by the user. Recommended dilutions (if any) may be listed below. |
| ELISA: | 1:65,000 |
| IHC: | 1:1,000 - 1:5,000 |
| WB: | 1:3,000 - 1:30,000 |

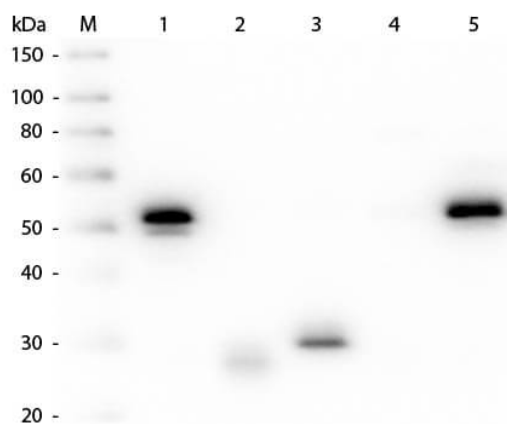
Formulation

| | |
|------------------------|--|
| Physical State: | Liquid (sterile filtered) |
| Concentration: | 1.1 mg/mL by UV absorbance at 280 nm |
| Buffer: | 0.02 M Potassium Phosphate, 0.15 M Sodium Chloride, pH 7.2 |
| Preservative: | 0.01% (w/v) Sodium Azide |

Shipping & Handling

| | |
|----------------------------|--|
| Shipping Condition: | Wet Ice |
| Storage Condition: | Store vial at 4° C prior to opening. This product is stable for several weeks at 4° C as an undiluted liquid. Dilute only prior to immediate use. For extended storage aliquot contents and freeze at -20° C or below. Avoid cycles of freezing and thawing. |
| Expiration: | Expiration date is one (1) year from date of receipt. |

Images



Western Blot

Western Blot of Anti-Rabbit IgG (H&L) (MOUSE) Antibody (Min X Hu, Gt, Ms Serum Proteins) (p/n 611-301-122). Lane M: 3 μ l Molecular Ladder. Lane 1: Rabbit IgG whole molecule (p/n 011-0102). Lane 2: Rabbit IgG F(ab) Fragment (p/n 011-0105). Lane 3: Rabbit IgG F(c) Fragment (p/n 010-0103). Lane 4: Rabbit IgM Whole Molecule (p/n 011-0107). Lane 5: Normal Rabbit Serum (p/n B309). All samples were reduced. Load: 50 ng per lane. Block: MB-070 for 30 min at RT. Primary Antibody: Anti-Rabbit IgG (H&L) (MOUSE) Antibody (Min X Hu, Gt, Ms Serum Proteins) (p/n 611-301-122) 1:1,000 for 60 min at RT. Secondary antibody: Anti-Mouse IgG (RABBIT) Peroxidase Conjugated Antibody (p/n 610-403-C46) 1:40,000 in MB-070 for 30 min at RT. Predicted/Observed Size: 25 and 50 kDa for Rabbit IgG and Serum, 25 kDa for F(c) and F(ab), 70 and 23 kDa for IgM. Rabbit F(c) migrates slightly higher.

References

- Toma M et al. Direct detection of neuron-specific enolase using a spectrometer-free colorimetric plasmonic biosensor. *Anal Methods*. (2023)

Disclaimer

This product is for research use only and is not intended for therapeutic or diagnostic applications. Please contact a technical service representative for more information. All products of animal origin manufactured by Rockland Immunochemicals are derived from starting materials of North American origin. Collection was performed in United States Department of Agriculture (USDA) inspected facilities and all materials have been inspected and certified to be free of disease and suitable for exportation. All properties listed are typical characteristics and are not specifications. All suggestions and data are offered in good faith but without guarantee as conditions and methods of use of our products are beyond our control. All claims must be made within 30 days following the date of delivery. The prospective user must determine the suitability of our materials before adopting them on a commercial scale. Suggested uses of our products are not recommendations to use our products in violation of any patent or as a license under any patent of Rockland Immunochemicals, Inc. If you require a commercial license to use this material and do not have one, then return this material, unopened to: Rockland Inc., P.O. BOX 5199, Limerick, Pennsylvania, USA.