



# SZABO SCANDIC

Part of Europa Biosite

## Produktinformation



Forschungsprodukte & Biochemikalien



Zellkultur & Verbrauchsmaterial



Diagnostik & molekulare Diagnostik



Laborgeräte & Service

Weitere Information auf den folgenden Seiten!  
See the following pages for more information!



### Lieferung & Zahlungsart

siehe unsere [Liefer- und Versandbedingungen](#)

### Zuschläge

- Mindermengenzuschlag
- Trockeneiszuschlag
- Gefahrgutzuschlag
- Expressversand

### SZABO-SCANDIC HandelsgmbH

Quellenstraße 110, A-1100 Wien

T. +43(0)1 489 3961-0

F. +43(0)1 489 3961-7

[mail@szabo-scandic.com](mailto:mail@szabo-scandic.com)

[www.szabo-scandic.com](http://www.szabo-scandic.com)

[linkedin.com/company/szaboscandic](https://www.linkedin.com/company/szaboscandic)



## Datasheet for 611-6302

**Rabbit IgG (H&L) Antibody Peroxidase Conjugated****Overview**

|                      |   |
|----------------------|---|
| <b>Description:</b>  | Sheep Anti-Rabbit IgG (H&L) Antibody Peroxidase Conjugated - 611-6302 |
| <b>Item No.:</b>     | 611-6302  |
| <b>Size:</b>         | 2 mg  |
| <b>Applications:</b> | ELISA, WB   |
| <b>Reactivity:</b>   | Rabbit  |
| <b>Host Species:</b> | Sheep   |

**Product Details**

|                      |  |
|----------------------|--|
| <b>Background:</b>   | Anti-Rabbit IgG peroxidase conjugated antibody generated in sheep detects specifically rabbit IgG. This secondary peroxidase conjugated antibody anti-Rabbit is ideal for investigators who routinely perform titration assays, western-blot, immunoprecipitation and more generally immunoassays. |
| <b>Synonyms:</b>     | sheep anti-Rabbit IgG Antibody peroxidase Conjugation, sheep anti-Rabbit IgG HRP Conjugated Antibody   |
| <b>Host Species:</b> | Sheep  |
| <b>Specificity:</b>  | IgG (H&L)  |
| <b>Conjugate:</b>    | Peroxidase (HRP)   |
| <b>Clonality:</b>    | Polyclonal   |
| <b>Format:</b>       | IgG  |

**Target Details**

|                        |  |
|------------------------|--|
| <b>Reactivity:</b>     | Rabbit   |
| <b>Immunogen Type:</b> | Native Protein   |
| <b>Immunogen:</b>      | Anti-Rabbit IgG (H&L) was produced by repeated immunization with rabbit whole IgG molecule in sheep. |

|                            |  |
|----------------------------|--|
| <b>Purity/Specificity:</b> | This product was prepared from monospecific antiserum by immunoaffinity chromatography using Rabbit IgG coupled to agarose. Assay by immunoelectrophoresis resulted in a single precipitin arc against anti-Peroxidase, anti-Sheep Serum, Rabbit IgG and Rabbit Serum. |
|----------------------------|--|

## Application Details

|                             |   |
|-----------------------------|---|
| <b>Tested Applications:</b> | ELISA, WB   |
| <b>Application Note:</b>    | Anti-Rabbit IgG peroxidase conjugated antibody has been tested by ELISA and western blot and is suitable for immunoblotting (western or dot blot), ELISA, immunoperoxidase electron microscopy and immunohistochemistry as well as other peroxidase-antibody based enzymatic assays requiring lot-to-lot consistency. |
| <b>Assay Dilutions:</b>     | All assays should be optimized by the user. Recommended dilutions (if any) may be listed below.   |
| <b>ELISA:</b>               | 1:10,000 - 1:50,000   |
| <b>IHC:</b>                 | 1:500 - 1:2,500   |
| <b>WB:</b>                  | 1:1,000 - 1:5,000   |

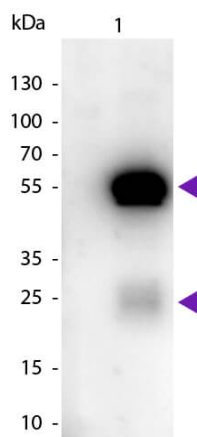
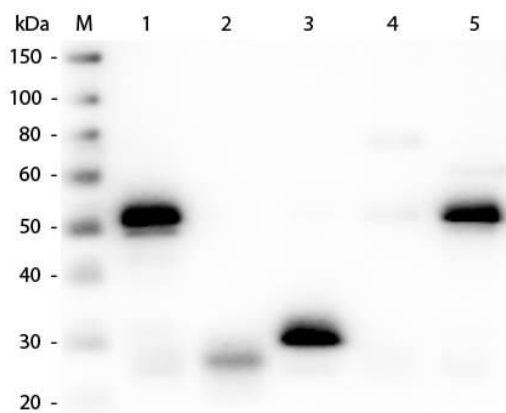
## Formulation

|                               |  |
|-------------------------------|--|
| <b>Physical State:</b>        | Lyophilized  |
| <b>Concentration:</b>         | 2.0 mg/mL by UV absorbance at 280 nm                                   |
| <b>Buffer:</b>                | 0.02 M Potassium Phosphate, 0.15 M Sodium Chloride, pH 7.2             |
| <b>Preservative:</b>          | 0.01% (w/v) Gentamicin Sulfate. Do NOT add Sodium Azide!               |
| <b>Stabilizer:</b>            | 10 mg/mL Bovine Serum Albumin (BSA) - Immunoglobulin and Protease free |
| <b>Reconstitution Volume:</b> | 1.0 mL   |
| <b>Reconstitution Buffer:</b> | Restore with deionized water (or equivalent)                           |

## Shipping & Handling

|                            |   |
|----------------------------|---|
| <b>Shipping Condition:</b> | Ambient   |
| <b>Storage Condition:</b>  | Store vial at 4° C prior to restoration. For extended storage aliquot contents and freeze at -20° C or below. Avoid cycles of freezing and thawing. Centrifuge product if not completely clear after standing at room temperature. This product is stable for several weeks at 4° C as an undiluted liquid. Dilute only prior to immediate use. |
| <b>Expiration:</b>         | Expiration date is one (1) year from date of receipt.   |

## Images



### Western Blot

Western Blot of Anti-Rabbit IgG (H&L) (SHEEP) Antibody (Min X Hu, Gt, Ms Serum Proteins) (p/n 611-6102). Lane M: 3  $\mu$ l Molecular Ladder. Lane 1: Rabbit IgG whole molecule (p/n 011-0102). Lane 2: Rabbit IgG F(ab) Fragment (p/n 011-0105). Lane 3: Rabbit IgG F(c) Fragment (p/n 010-0103). Lane 4: Rabbit IgM Whole Molecule (p/n 011-0107). Lane 5: Normal Rabbit Serum (p/n B309). All samples were reduced. Load: 50 ng per lane. Block: MB-070 for 30 min at RT. Primary Antibody: Anti-Rabbit IgG (H&L) (SHEEP) Antibody (Min X Hu, Gt, Ms Serum Proteins) (p/n 611-6102) 1:3,000 for 60 min at RT. Secondary antibody: Anti-Sheep IgG (DONKEY) Peroxidase Conjugated Antibody (p/n 613-703-168) 1:40,000 in MB-070 for 30 min at RT. Predicted/Observed Size: 25 and 50 kDa for Rabbit IgG and Serum, 25 kDa for F(c) and F(ab), 70 and 23 kDa for IgM. Rabbit F(c) migrates slightly higher.

### Western Blot

Western blot of Peroxidase Conjugated Sheep Anti-Rabbit IgG secondary antibody. Lane 1: Rabbit IgG. Lane 2: None. Load: 50 ng per lane. Primary antibody: None. Secondary antibody: Peroxidase sheep secondary antibody at 1:1,000 for 60 min at RT. Blocking: MB-070 for 30 min at RT. Predicted/Observed size: 25 & 55 kDa, 25 & 55 kDa for Rabbit IgG. Other band(s): None.

## Disclaimer

This product is for research use only and is not intended for therapeutic or diagnostic applications. Please contact a technical service representative for more information. All products of animal origin manufactured by Rockland Immunochemicals are derived from starting materials of North American origin. Collection was performed in United States Department of Agriculture (USDA) inspected facilities and all materials have been inspected and certified to be free of disease and suitable for exportation. All properties listed are typical characteristics and are not specifications. All suggestions and data are offered in good faith but without guarantee as conditions and methods of use of our products are beyond our control. All claims must be made within 30 days following the date of delivery. The prospective user must determine the suitability of our materials before adopting them on a commercial scale. Suggested uses of our products are not recommendations to use our products in violation of any patent or as a license under any patent of Rockland Immunochemicals, Inc. If you require a commercial license to use this material and do not have one, then return this material, unopened to: Rockland Inc., P.O. BOX 5199, Limerick, Pennsylvania, USA.