



SZABO SCANDIC

Part of Europa Biosite

Produktinformation



Forschungsprodukte & Biochemikalien



Zellkultur & Verbrauchsmaterial



Diagnostik & molekulare Diagnostik



Laborgeräte & Service

Weitere Information auf den folgenden Seiten!
See the following pages for more information!



Lieferung & Zahlungsart

siehe unsere [Liefer- und Versandbedingungen](#)

Zuschläge

- Mindermengenzuschlag
- Trockeneiszuschlag
- Gefahrgutzuschlag
- Expressversand

SZABO-SCANDIC HandelsgmbH

Quellenstraße 110, A-1100 Wien

T. +43(0)1 489 3961-0

F. +43(0)1 489 3961-7

mail@szabo-scandic.com

www.szabo-scandic.com

[linkedin.com/company/szaboscandic](https://www.linkedin.com/company/szaboscandic) 

Datasheet for 611-6502**Rabbit IgG (H&L) Antibody Alkaline Phosphatase Conjugated****Overview**

Description:	Sheep Anti-Rabbit IgG (H&L) Antibody Alkaline Phosphatase Conjugated - 611-6502
Item No.:	611-6502
Size:	1 mg
Applications:	Dot Blot, ELISA, WB
Reactivity:	Rabbit
Host Species:	Sheep

Product Details

Background:	Rabbit IgG antibody detects rabbit IgG whole molecule heavy and light chain components. Anti-Rabbit IgG antibody is ideal for researchers using immunoassays with rabbit primary antibody reagents.
Synonyms:	sheep anti-Rabbit IgG Antibody Alkaline Phosphatase Conjugation, sheep anti-Rabbit IgG Alkaline Phosphatase Conjugated Antibody
Host Species:	Sheep
Specificity:	IgG (H&L)
Conjugate:	Alkaline Phosphatase (AP)
Clonality:	Polyclonal
Format:	IgG

Target Details

Reactivity:	Rabbit
Immunogen:	Rabbit IgG whole molecule
Purity/Specificity:	Anti-Rabbit IgG Antibody Alkaline Phosphatase Conjugated was prepared from monospecific antiserum by immunoaffinity chromatography using Rabbit IgG coupled to agarose beads followed by solid phase adsorption(s) to remove any unwanted reactivities. Assay by immunoelectrophoresis resulted in a single precipitin arc against anti-Alkaline Phosphatase (calf intestine), anti-Sheep Serum, Rabbit IgG and Rabbit Serum.

Relevant Links: • [611-6502 SDS](#)

Application Details

Tested Applications:	Dot Blot, ELISA, WB
Application Note:	Anti-Rabbit IgG Alkaline Phosphatase antibody has been tested by ELISA, dot blot, and western blot and is suitable for immunohistochemistry applications. Specific conditions for reactivity should be optimized by the researcher.
Assay Dilutions:	All assays should be optimized by the user. Recommended dilutions (if any) may be listed below.
ELISA:	1:15,000
IHC:	1:200 - 1:1,000
WB:	1:500 - 1:2,000

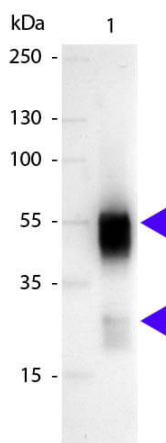
Formulation

Physical State:	Liquid (sterile filtered)
Concentration:	1.0 mg/mL by UV absorbance at 280 nm
Buffer:	0.05 M Tris Chloride, 0.15M Sodium Chloride, 0.001M Magnesium Chloride, 0.0001M Zinc Chloride, 50% (v/v) Glycerol; pH 8.0
Preservative:	0.01% (w/v) Sodium Azide
Stabilizer:	10 mg/mL Bovine Serum Albumin (BSA) - Immunoglobulin and Protease free

Shipping & Handling

Shipping Condition:	Wet Ice
Storage Condition:	Store vial at 4° C before opening. DO NOT FREEZE. This product is stable at 4° C as an undiluted liquid. Dilute only prior to immediate use. Freezing alkaline phosphatase conjugates will result in a substantial loss of enzymatic activity.
Expiration:	Expiration date is one (1) year from date of receipt.

Images



Western Blot

Western blot of Alkaline Phosphatase conjugated Sheep Anti-Rabbit IgG secondary antibody. Lane 1: Rabbit IgG. Lane 2: None. Load: 50 ng per lane. Primary antibody: None. Secondary antibody: Alkaline Phosphatase sheep secondary antibody at 1:1,000 for 60 min at RT. Blocking: MB-070 for 30 min at RT. Predicted/Observed size: 25 & 55 kDa, 25 & 55 kDa for Rabbit IgG. Other band(s): None.



Dot Blot

Dot Blot of Sheep anti-Rabbit IgG Antibody Alkaline Phosphatase Conjugated. Antigen: Rabbit IgG. Load: Lane 1 - 200 ng Lane 2 - 66.7 ng Lane 3 - 22.2 ng Lane 4 - 7.41 ng Lane 5 - 2.47 ng. Primary antibody: n/a. Secondary antibody: Sheep anti-Rabbit IgG Antibody Alkaline Phosphatase Conjugated at 1:1,000 for 60 min at RT. Block: MB-070 for 1 HR at RT.

Disclaimer

This product is for research use only and is not intended for therapeutic or diagnostic applications. Please contact a technical service representative for more information. All products of animal origin manufactured by Rockland Immunochemicals are derived from starting materials of North American origin. Collection was performed in United States Department of Agriculture (USDA) inspected facilities and all materials have been inspected and certified to be free of disease and suitable for exportation. All properties listed are typical characteristics and are not specifications. All suggestions and data are offered in good faith but without guarantee as conditions and methods of use of our products are beyond our control. All claims must be made within 30 days following the date of delivery. The prospective user must determine the suitability of our materials before adopting them on a commercial scale. Suggested uses of our products are not recommendations to use our products in violation of any patent or as a license under any patent of Rockland Immunochemicals, Inc. If you require a commercial license to use this material and do not have one, then return this material, unopened to: Rockland Inc., P.O. BOX 5199, Limerick, Pennsylvania, USA.