



SZABO SCANDIC

Part of Europa Biosite

Produktinformation



Forschungsprodukte & Biochemikalien



Zellkultur & Verbrauchsmaterial



Diagnostik & molekulare Diagnostik



Laborgeräte & Service

Weitere Information auf den folgenden Seiten!
See the following pages for more information!



Lieferung & Zahlungsart

siehe unsere [Liefer- und Versandbedingungen](#)

Zuschläge

- Mindermengenzuschlag
- Trockeneiszuschlag
- Gefahrgutzuschlag
- Expressversand

SZABO-SCANDIC HandelsgmbH

Quellenstraße 110, A-1100 Wien

T. +43(0)1 489 3961-0

F. +43(0)1 489 3961-7

mail@szabo-scandic.com

www.szabo-scandic.com

[linkedin.com/company/szaboscandic](https://www.linkedin.com/company/szaboscandic) 

Datasheet for 611-702-127**Rabbit IgG (H&L) Antibody Fluorescein Conjugated Pre-Adsorbed****Overview**

Description:	Donkey Anti-Rabbit IgG (H&L) Antibody Fluorescein Conjugated (Min X Bv Ch Gt GP Ham Hs Hu Ms Rt & Sh Serum Proteins) - 611-702-127
Item No.:	611-702-127
Size:	1 mg
Applications:	WB, IF, Multiplex
Reactivity:	Rabbit
Host Species:	Donkey

Product Details

Background:	Anti-Rabbit IgG (H&L) Fluorescein Antibody generated in donkey detects reactivity to Rabbit IgG. Secreted as part of the adaptive immune response by plasma B cells, immunoglobulin G constitutes 75% of serum immunoglobulins. Immunoglobulin G binds to viruses, bacteria, as well as fungi and facilitates their destruction or neutralization via agglutination (and thereby immobilizing them), activation of the complement cascade, and opsonization for phagocytosis. The whole IgG molecule possesses both the F(c) region, recognized by high-affinity Fc receptor proteins, as well as the F(ab) region possessing the epitope-recognition site. Both the Heavy and Light chains of the antibody molecule are present. Secondary Antibodies are available in a variety of formats and conjugate types. When choosing a secondary antibody product, consideration must be given to species and immunoglobulin specificity, conjugate type, fragment and chain specificity, level of cross-reactivity, and host-species source and fragment composition.
Synonyms:	Donkey anti-Rabbit IgG Fluorescein Conjugated Antibody, Donkey anti-Rabbit IgG Antibody FITC Conjugation
Host Species:	Donkey
Specificity:	IgG (H&L)
Conjugate:	Fluorescein (FITC)
Clonality:	Polyclonal
Format:	IgG
F/P Ratio:	3.8

Target Details

Reactivity:	Rabbit
Immunogen:	Rabbit IgG whole molecule
Purity/Specificity:	This product was prepared from monospecific antiserum by immunoaffinity chromatography using Rabbit IgG coupled to agarose beads followed by solid phase adsorption(s) to remove any unwanted reactivities. Assay by immunoelectrophoresis resulted in a single precipitin arc against anti-Fluorescein, anti-Donkey Serum, Rabbit IgG, and Rabbit Serum. No reaction was observed against Bovine, Chicken, Goat, Guinea Pig, Hamster, Horse, Human, Mouse, Rat and Sheep Serum Proteins.

Application Details

Tested Applications:	WB
Suggested Applications:	IF, Multiplex (Based on references)
Application Note:	Anti-Rabbit IgG (H&L) Fluorescein Antibody has been tested by western blot and is designed for immunofluorescence microscopy, fluorescence based plate assays (FLISA) and fluorescent western blotting. This product is also suitable for multiplex analysis, including multicolor imaging, utilizing various commercial platforms.
Assay Dilutions:	All assays should be optimized by the user. Recommended dilutions (if any) may be listed below.
FC:	1:500 - 1:2,500
FLISA:	1:10,000 - 1:50,000
IF:	1:1,000 - 1:5,000

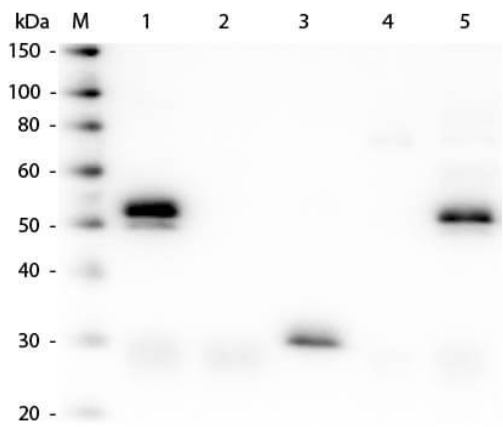
Formulation

Physical State:	Lyophilized
Concentration:	1.0 mg/mL by UV absorbance at 280 nm
Buffer:	0.02 M Potassium Phosphate, 0.15 M Sodium Chloride, pH 7.2
Preservative:	0.01% (w/v) Sodium Azide
Stabilizer:	10 mg/mL Bovine Serum Albumin (BSA) - Immunoglobulin and Protease free
Reconstitution Volume:	1.0 mL
Reconstitution Buffer:	Restore with deionized water (or equivalent)

Shipping & Handling

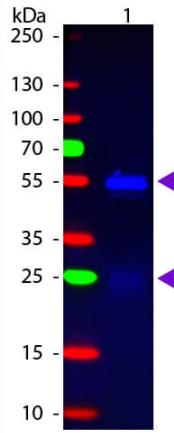
Shipping Condition:	Ambient
Storage Condition:	Store vial at 4° C prior to restoration. For extended storage aliquot contents and freeze at -20° C or below. Avoid cycles of freezing and thawing. Centrifuge product if not completely clear after standing at room temperature. This product is stable for several weeks at 4° C as an undiluted liquid. Dilute only prior to immediate use.
Expiration:	Expiration date is one (1) year from date of receipt.

Images



Western Blot

Western Blot of Anti-Rabbit IgG (H&L) (DONKEY) Antibody (Min X Bv Ch Gt GP Ham Hs Hu Ms Rt & Sh Serum Proteins) (p/n 611-701-127). Lane M: 3 µl Molecular Ladder. Lane 1: Rabbit IgG whole molecule (p/n 011-0102). Lane 2: Rabbit IgG F(ab) Fragment (p/n 011-0105). Lane 3: Rabbit IgG F(c) Fragment (p/n 010-0103). Lane 4: Rabbit IgM Whole Molecule (p/n 011-0107). Lane 5: Normal Rabbit Serum (p/n B309). All samples were reduced. Load: 50 ng of IgG, F(ab), F(c) and Serum, 25 ng of IgM. Block: MB-070 for 30 min at RT. Primary Antibody: Anti-Rabbit IgG (H&L) (DONKEY) Antibody (Min X Bv Ch Gt GP Ham Hs Hu Ms Rt & Sh Serum Proteins) (p/n 611-701-127) 1:7,500 for 60 min at RT. Secondary antibody: Anti-Donkey IgG (GOAT) Peroxidase Conjugated Antibody (p/n 616-1302) 1:40,000 in MB-070 for 30 min at RT. Predicted/Observed Size: 25 and 50 kDa for Rabbit IgG and Serum, 25 kDa for F(c) and F(ab), 70 and 23 kDa for IgM. Rabbit F(c) migrates slightly higher.



Western Blot

Western blot of Fluorescein conjugated Donkey Anti-Rabbit IgG Pre-Adsorbed secondary antibody. Lane 1: Rabbit IgG. Lane 2: None. Load: 50 ng per lane. Primary antibody: None. Secondary antibody: Fluorescein donkey secondary antibody at 1:1,000 for 60 min at RT. Blocking: MB-070 for 30 min at RT. Predicted/Observed size: 25 & 55 kDa, 25 & 55 kDa for Rabbit IgG. Other band(s): None.

References

- Huang CH et al. The microtubular preprophase band recruits Myosin XI to the cortical division site to guide phragmoplast expansion during plant cytokinesis. *Dev Cell.* (2024)
- van den Berg SJW et al. p97/VCP drives turnover of SUMOylated centromeric CCAN proteins and CENP-A. *Mol Biol Cell.* (2023)
- Murillo-Pineda M et al. Induction of spontaneous human neocentromere formation and long-term maturation. *J Cell Biol.* (2021)
- Bobkov GOM et al. Spt6 is a maintenance factor for centromeric CENP-A. *Nat Commun.* (2020)
- Javkar T et al. Slow cycling intestinal stem cell and Paneth cell responses to *Trichinella spiralis* infection. *Parasitol Int.* (2020)
- Zhang H et al. Role of the BUB3 protein in phragmoplast microtubule reorganization during cytokinesis. *Nat Plants.* (2018)
- Tseng et al. The preprophase band-associated kinesin-14 OsKCH2 is a processive minus-end-directed microtubule motor. *Nature Communications* (2018)
- Lee YRJ et al. The mitotic function of augmin is dependent on its microtubule-associated protein subunit EDE1 in *Arabidopsis thaliana*. *Curr Biol.* (2017)
- Suzuki et al. Characterization of RyDEN (C19orf66) as an Interferon-Stimulated Cellular Inhibitor against Dengue Virus Replication. *PLOS Pathogens* (2016)
- Hughes KR et al. Heterogeneity in histone 2B-green fluorescent protein-retaining putative small intestinal stem cells at cell position 4 and their absence in the colon. *Am J Physiol Gastrointest Liver Physiol.* (2012)
- Smith JE et al. CNS cell groups projecting to sympathetic outflow of tail artery: neural circuits involved in heat loss in the rat. *Brain Res.* (1998)

Disclaimer

This product is for research use only and is not intended for therapeutic or diagnostic applications. Please contact a technical service representative for more information. All products of animal origin manufactured by Rockland Immunochemicals are derived from starting materials of North American origin. Collection was performed in United States Department of Agriculture (USDA) inspected facilities and all materials have been inspected and certified to be free of disease and suitable for exportation. All properties listed are typical characteristics and are not specifications. All suggestions and data are offered in good faith but without guarantee as conditions and methods of use of our products are beyond our control. All claims must be made within 30 days following the date of delivery. The prospective user must determine the suitability of our materials before adopting them on a commercial scale. Suggested uses of our products are not recommendations to use our products in violation of any patent or as a license under any patent of Rockland Immunochemicals, Inc. If you require a commercial license to use this material and do not have one, then return this material, unopened to: Rockland Inc., P.O. BOX 5199, Limerick, Pennsylvania, USA.