



# SZABO SCANDIC

Part of Europa Biosite

## Produktinformation



Forschungsprodukte & Biochemikalien



Zellkultur & Verbrauchsmaterial



Diagnostik & molekulare Diagnostik



Laborgeräte & Service

Weitere Information auf den folgenden Seiten!  
See the following pages for more information!



### Lieferung & Zahlungsart

siehe unsere [Liefer- und Versandbedingungen](#)

### Zuschläge

- Mindermengenzuschlag
- Trockeneiszuschlag
- Gefahrgutzuschlag
- Expressversand

### SZABO-SCANDIC Handels GmbH

Quellenstraße 110, A-1100 Wien

T. +43(0)1 489 3961-0

F. +43(0)1 489 3961-7

[mail@szabo-scandic.com](mailto:mail@szabo-scandic.com)

[www.szabo-scandic.com](http://www.szabo-scandic.com)

[linkedin.com/company/szaboscandic](https://www.linkedin.com/company/szaboscandic) 

**Datasheet for 612-4504****Rat IgG F(ab')<sub>2</sub> Antibody Alkaline Phosphatase Conjugated****Overview**

<b>Description:</b>	Rabbit Anti-Rat IgG F(ab') <sub>2</sub> Antibody Alkaline Phosphatase Conjugated - 612-4504
<b>Item No.:</b>	612-4504
<b>Size:</b>	1 mg
<b>Reactivity:</b>	Rat
<b>Host Species:</b>	Rabbit

**Product Details**

<b>Background:</b>	Anti-Rat IgG F(ab') <sub>2</sub> Antibody generated in rabbit recognizes the dimeric Fab portion of the rat IgG molecule. Rat IgG F(ab') <sub>2</sub> is a proteolytic fragment of immunoglobulin G (IgG) obtained by limited digestion with the enzyme pepsin under controlled conditions of temperature, time and pH. F(ab') <sub>2</sub> molecules lack the Fc portion of IgG and therefore receptors that bind rat IgG F(c) will not bind rat IgG F(ab') <sub>2</sub> molecules. Secondary Antibodies are available in a variety of formats and conjugate types. When choosing a secondary antibody product, consideration must be given to species and immunoglobulin specificity, conjugate type, fragment and chain specificity, level of cross-reactivity, and host-species source and fragment composition. This Anti-Rat IgG F(ab') <sub>2</sub> is conjugated to Alkaline Phosphatase.
<b>Synonyms:</b>	Rabbit Anti-Rat IgG F(ab') <sub>2</sub> alkaline phosphatase Conjugated Antibody, Rabbit Anti-Rat IgG Fab2 alkaline phosphatase Conjugated Antibody, Rabbit Anti-Rat IgG Fab2 Fragment Antibody alk phos Conjugation
<b>Host Species:</b>	Rabbit
<b>Specificity:</b>	IgG F(ab') <sub>2</sub>
<b>Conjugate:</b>	Alkaline Phosphatase (AP)
<b>Clonality:</b>	Polyclonal
<b>Format:</b>	IgG

**Target Details**

<b>Reactivity:</b>	Rat
<b>Immunogen:</b>	Rat IgG F(ab') <sub>2</sub> fragment

<b>Purity/Specificity:</b>	This product was prepared from monospecific antiserum by immunoaffinity chromatography using Rat IgG coupled to agarose beads followed by solid phase adsorption(s) to remove any unwanted reactivities. Assay by immunoelectrophoresis resulted in a single precipitin arc against anti-Alkaline Phosphatase (calf intestine), anti-Rabbit Serum, Rat IgG, Rat IgG F(ab') <sub>2</sub> and Rat Serum. No reaction was observed against Rat IgG F(c).
----------------------------	---

## Application Details

<b>Application Note:</b>	This product has been assayed against 1.0 µg of Rat IgG in a standard capture ELISA using pNPP p-nitrophenyl phosphate code # NPP-10 as a substrate for 30 minutes at room temperature. A working dilution of 1:2,500 to 1:10,800 of the reconstitution concentration is suggested for this product.
<b>Assay Dilutions:</b>	All assays should be optimized by the user. Recommended dilutions (if any) may be listed below.
<b>ELISA:</b>	1:2,000 - 1:10,000
<b>IHC:</b>	1:200 - 1:1,000
<b>WB:</b>	1:500 - 1:2,500

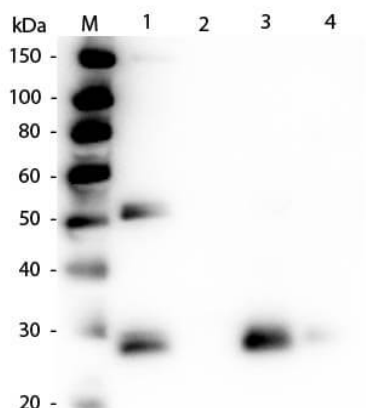
## Formulation

<b>Physical State:</b>	Liquid (sterile filtered)
<b>Concentration:</b>	1.3 mg/mL by UV absorbance at 280 nm
<b>Buffer:</b>	0.05 M Tris Chloride, 0.15M Sodium Chloride, 0.001M Magnesium Chloride, 0.0001M Zinc Chloride, 50% (v/v) Glycerol; pH 8.0
<b>Preservative:</b>	0.01% (w/v) Sodium Azide
<b>Stabilizer:</b>	10 mg/mL Bovine Serum Albumin (BSA) - Immunoglobulin and Protease free

## Shipping & Handling

<b>Shipping Condition:</b>	Wet Ice
<b>Storage Condition:</b>	Store vial at 4° C before opening. DO NOT FREEZE. This product is stable at 4° C as an undiluted liquid. Dilute only prior to immediate use. Freezing alkaline phosphatase conjugates will result in a substantial loss of enzymatic activity.
<b>Expiration:</b>	Expiration date is one (1) year from date of receipt.

## Images



### Western Blot

Western Blot of Anti-Rat IgG F(ab')<sub>2</sub> (RABBIT) Antibody (p/n 612-4104). Lane M: 3 µl Molecular Ladder. Lane 1: Rat IgG whole molecule (p/n 012-0102). Lane 2: Rat IgG F(c) Fragment (p/n 012-0103). Lane 3: Rat IgG Fab Fragment (p/n 012-0105). Lane 4: Rat IgM Whole Molecule (p/n 012-0107). All samples were reduced. Load: 50 ng per lane. Block: MB-070 for 30 min at RT. Primary Antibody: Anti-Rat IgG F(ab')<sub>2</sub> (RABBIT) Antibody (p/n 612-4104) 1:1,000 for 60 min at RT. Secondary Antibody: Anti-Rabbit IgG (GOAT) Peroxidase Conjugated Antibody (p/n 611-103-122) 1:40,000 in MB-070 for 30 min at RT. Predicted/Observed Size: 25 and 55 kDa for Rat IgG, 25 kDa for F(c) and Fab, 78 and 25 kDa for IgM. Rat F(c) migrates slightly higher.

## Disclaimer

This product is for research use only and is not intended for therapeutic or diagnostic applications. Please contact a technical service representative for more information. All products of animal origin manufactured by Rockland Immunochemicals are derived from starting materials of North American origin. Collection was performed in United States Department of Agriculture (USDA) inspected facilities and all materials have been inspected and certified to be free of disease and suitable for exportation. All properties listed are typical characteristics and are not specifications. All suggestions and data are offered in good faith but without guarantee as conditions and methods of use of our products are beyond our control. All claims must be made within 30 days following the date of delivery. The prospective user must determine the suitability of our materials before adopting them on a commercial scale. Suggested uses of our products are not recommendations to use our products in violation of any patent or as a license under any patent of Rockland Immunochemicals, Inc. If you require a commercial license to use this material and do not have one, then return this material, unopened to: Rockland Inc., P.O. BOX 5199, Limerick, Pennsylvania, USA.