



SZABO SCANDIC

Part of Europa Biosite

Produktinformation



Forschungsprodukte & Biochemikalien



Zellkultur & Verbrauchsmaterial



Diagnostik & molekulare Diagnostik



Laborgeräte & Service

Weitere Information auf den folgenden Seiten!
See the following pages for more information!



Lieferung & Zahlungsart

siehe unsere [Liefer- und Versandbedingungen](#)

Zuschläge

- Mindermengenzuschlag
- Trockeneiszuschlag
- Gefahrgutzuschlag
- Expressversand

SZABO-SCANDIC HandelsgmbH

Quellenstraße 110, A-1100 Wien

T. +43(0)1 489 3961-0

F. +43(0)1 489 3961-7

mail@szabo-scandic.com

www.szabo-scandic.com

[linkedin.com/company/szaboscandic](https://www.linkedin.com/company/szaboscandic)



Datasheet for 612-4603**Rat IgG Fc Antibody Biotin Conjugated****Overview**

Description:	Rabbit Anti-Rat IgG Fc Antibody Biotin Conjugated - 612-4603
Item No.:	612-4603
Size:	1.5 mg
Reactivity:	Rat
Host Species:	Rabbit

Product Details

Background:	Anti-Rat IgG F(c) generated in rabbit is a proteolytic fragment of immunoglobulin G (IgG) obtained by limited digestion with the enzyme papain under controlled conditions of temperature, time and pH. Receptors bind the Fc portion of rat IgG and often this fragment is removed from immunoglobulins to minimize receptor binding and lower background reactivity.
Synonyms:	Rabbit Anti Rat IgG F(c) Biotin Conjugated Antibody, Rabbit Anti-Rat IgG Fc Fragment Biotin Conjugated Antibody, Rabbit Anti-Rat IgG Fc Antibody Biotin Conjugation
Host Species:	Rabbit
Specificity:	IgG Fc
Conjugate:	Biotin
Clonality:	Polyclonal
Format:	IgG

Target Details

Reactivity:	Rat
Immunogen:	Rat IgG F(c) fragment
Purity/Specificity:	This product was prepared from monospecific antiserum by immunoaffinity chromatography using Rat IgG coupled to agarose beads followed by solid phase adsorption(s) to remove any unwanted reactivities. Assay by immunoelectrophoresis resulted in a single precipitin arc against anti-biotin, anti-Rabbit Serum, Rat IgG, Rat IgG F(c) and Rat Serum. No reaction was observed against Rat IgG F(ab).

Application Details

Application Note:	This product has been assayed against 1.0 ug of Rat IgG in a standard capture ELISA using Peroxidase Conjugated Streptavidin #S000-03 and ABTS (2,2'-azino-bis-[3-ethylbenthiazoline-6-sulfonic acid]) code # ABTS-100 as a substrate for 30 minutes at room temperature. A working dilution of 1:2,000 to 1:8,000 of the reconstitution concentration is suggested for this product.
Assay Dilutions:	All assays should be optimized by the user. Recommended dilutions (if any) may be listed below.
ELISA:	1:20,000 - 1:100,000
IHC:	1:1,000 - 1:5,000
WB:	1:2,000 - 1:10,000

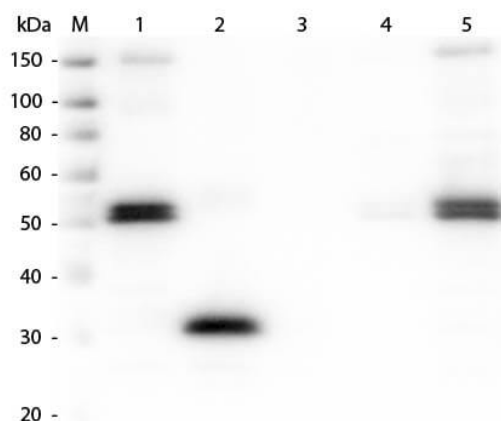
Formulation

Physical State:	Lyophilized
Concentration:	1.5 mg/mL by UV absorbance at 280 nm
Buffer:	0.02 M Potassium Phosphate, 0.15 M Sodium Chloride, pH 7.2
Preservative:	0.01% (w/v) Sodium Azide
Stabilizer:	10 mg/mL Bovine Serum Albumin (BSA) - Immunoglobulin and Protease free
Reconstitution Volume:	1.0 mL
Reconstitution Buffer:	Restore with deionized water (or equivalent)

Shipping & Handling

Shipping Condition:	Ambient
Storage Condition:	Store vial at 4° C prior to restoration. For extended storage aliquot contents and freeze at -20° C or below. Avoid cycles of freezing and thawing. Centrifuge product if not completely clear after standing at room temperature. This product is stable for several weeks at 4° C as an undiluted liquid. Dilute only prior to immediate use.
Expiration:	Expiration date is one (1) year from date of receipt.

Images



Western Blot

Western Blot of Anti-Rat IgG F(c) (RABBIT) Antibody (p/n 612-4103). Lane M: 3 μ l Molecular Ladder. Lane 1: Rat IgG whole molecule (p/n 012-0102). Lane 2: Rat IgG F(c) Fragment (p/n 012-0103). Lane 3: Rat IgG Fab Fragment (p/n 012-0105). Lane 4: Rat IgM Whole Molecule (p/n 012-0107). Lane 5: Rat Serum (p/n D310-05). All samples were reduced. Load: 50 ng per lane. Block: MB-070 for 30 min at RT. Primary Antibody: Anti-Rat IgG F(c) (RABBIT) Antibody (p/n 612-4103) 1:1,000 for 60 min at RT. Secondary Antibody: Anti-Rabbit IgG (GOAT) Peroxidase Conjugated Antibody (p/n 611-103-122) 1:40,000 in MB-070 for 30 min at RT. Predicted/Observed Size: 25 and 55 kDa for Rat IgG and Serum, 25 kDa for F(c) and Fab, 78 and 25 kDa for IgM. Rat F(c) migrates slightly higher.

Disclaimer

This product is for research use only and is not intended for therapeutic or diagnostic applications. Please contact a technical service representative for more information. All products of animal origin manufactured by Rockland Immunochemicals are derived from starting materials of North American origin. Collection was performed in United States Department of Agriculture (USDA) inspected facilities and all materials have been inspected and certified to be free of disease and suitable for exportation. All properties listed are typical characteristics and are not specifications. All suggestions and data are offered in good faith but without guarantee as conditions and methods of use of our products are beyond our control. All claims must be made within 30 days following the date of delivery. The prospective user must determine the suitability of our materials before adopting them on a commercial scale. Suggested uses of our products are not recommendations to use our products in violation of any patent or as a license under any patent of Rockland Immunochemicals, Inc. If you require a commercial license to use this material and do not have one, then return this material, unopened to: Rockland Inc., P.O. BOX 5199, Limerick, Pennsylvania, USA.