



# SZABO SCANDIC

Part of Europa Biosite

## Produktinformation



Forschungsprodukte & Biochemikalien



Zellkultur & Verbrauchsmaterial



Diagnostik & molekulare Diagnostik



Laborgeräte & Service

Weitere Information auf den folgenden Seiten!  
See the following pages for more information!



### Lieferung & Zahlungsart

siehe unsere [Liefer- und Versandbedingungen](#)

### Zuschläge

- Mindermengenzuschlag
- Trockeneiszuschlag
- Gefahrgutzuschlag
- Expressversand

### SZABO-SCANDIC HandelsgmbH

Quellenstraße 110, A-1100 Wien

T. +43(0)1 489 3961-0

F. +43(0)1 489 3961-7

[mail@szabo-scandic.com](mailto:mail@szabo-scandic.com)

[www.szabo-scandic.com](http://www.szabo-scandic.com)

[linkedin.com/company/szaboscandic](https://www.linkedin.com/company/szaboscandic) 

**Datasheet for 613-4302****Sheep IgG (H&L) Antibody Peroxidase Conjugated****Overview**

<b>Description:</b>	Rabbit Anti-Sheep IgG (H&L) Antibody Peroxidase Conjugated - 613-4302
<b>Item No.:</b>	613-4302
<b>Size:</b>	2 mg
<b>Applications:</b>	ELISA, WB
<b>Reactivity:</b>	Sheep
<b>Host Species:</b>	Rabbit

**Product Details**

<b>Background:</b>	Anti-Sheep IgG antibody generated in rabbit detects specifically sheep IgG. This secondary antibody anti-Sheep is ideal for investigators who routinely perform ELISA, Sandwich ELISA, titration assays, western-blot, immunoprecipitation and more generally immunoassays.
<b>Synonyms:</b>	Rabbit Anti-Sheep IgG peroxidase Conjugated Antibody, Rabbit Anti-Sheep IgG Antibody HRP Conjugation
<b>Host Species:</b>	Rabbit
<b>Specificity:</b>	IgG (H&L)
<b>Conjugate:</b>	Peroxidase (HRP)
<b>Clonality:</b>	Polyclonal
<b>Format:</b>	IgG

**Target Details**

<b>Reactivity:</b>	Sheep
<b>Immunogen Type:</b>	Native Protein
<b>Immunogen:</b>	Anti-Sheep IgG (H&L) was produced by repeated immunization with Sheep IgG whole molecule in rabbit.

<b>Purity/Specificity:</b>	This product was prepared from monospecific antiserum by immunoaffinity chromatography using Sheep IgG coupled to agarose beads followed by solid phase adsorption(s) to remove any unwanted reactivities. Assay by immunoelectrophoresis resulted in a single precipitin arc against anti-Peroxidase, anti-Rabbit Serum, Sheep IgG and Sheep Serum.
----------------------------	--

## Application Details

<b>Tested Applications:</b>	ELISA, WB
<b>Application Note:</b>	Anti-Sheep IgG Peroxidase Conjugated Antibody has been tested by ELISA and western blot and is suitable for use in immunoelectrophoresis, western-blot, competitive western-blot, ELISA and competitive ELISA assays. Specific conditions for reactivity and signal detection should be optimized by the end user.
<b>Assay Dilutions:</b>	All assays should be optimized by the user. Recommended dilutions (if any) may be listed below.
<b>ELISA:</b>	1:40,000 - 1:80,000
<b>IHC:</b>	1:500 - 1:2,500
<b>WB:</b>	1:1,000 - 1:5,000

## Formulation

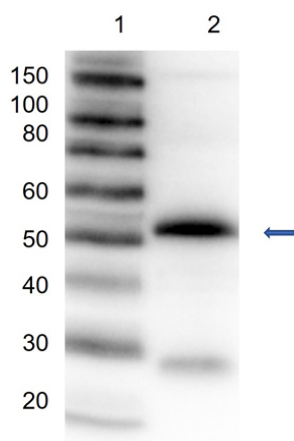
<b>Physical State:</b>	Lyophilized
<b>Concentration:</b>	2.0 mg/mL by UV absorbance at 280 nm
<b>Buffer:</b>	0.02 M Potassium Phosphate, 0.15 M Sodium Chloride, pH 7.2
<b>Preservative:</b>	0.01% (w/v) Gentamicin Sulfate. Do NOT add Sodium Azide!
<b>Stabilizer:</b>	10 mg/mL Bovine Serum Albumin (BSA) - Immunoglobulin and Protease free
<b>Reconstitution Volume:</b>	1.0 mL
<b>Reconstitution Buffer:</b>	Restore with deionized water (or equivalent)

## Shipping & Handling

<b>Shipping Condition:</b>	Ambient
<b>Storage Condition:</b>	Store vial at 4° C prior to restoration. For extended storage aliquot contents and freeze at -20° C or below. Avoid cycles of freezing and thawing. Centrifuge product if not completely clear after standing at room temperature. This product is stable for several weeks at 4° C as an undiluted liquid. Dilute only prior to immediate use.

**Expiration:** Expiration date is one (1) year from date of receipt.

## Images



### Western Blot

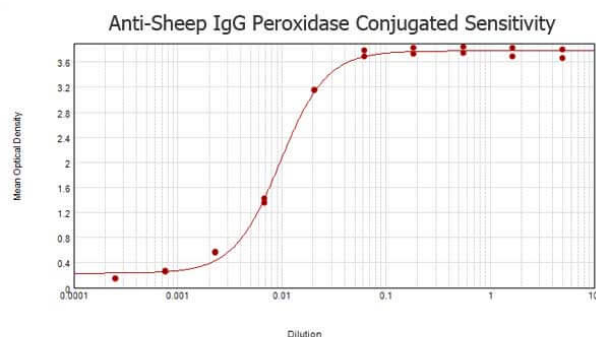
Western Blot of Rabbit Anti-Sheep IgG Peroxidase Conjugated Antibody.

Lane 1: Super Signal Molecular Weight.

Lane 2: Sheep IgG (p/n 013-0102).

Detection: Rabbit Anti-Sheep IgG Peroxidase Conjugated Antibody at 1:1000 overnight at 2-8°C.

Block: Blocking Buffer for Fluorescent Western Blotting (p/n MB-070) for 30mins at RT.



### ELISA

ELISA results of purified Rabbit anti-Sheep IgG Antibody Peroxidase Conjugated tested against purified Sheep IgG. Each well was coated in duplicate with 1.0 µg of Sheep IgG (p/n 013-0102-0010). The starting dilution of antibody was 5µg/ml and the X-axis represents the Log10 of a 3-fold dilution. This titration is a 4-parameter curve fit where the IC50 is defined as the titer of the antibody. Assay performed using 3% fish gelatin as blocking buffer and TMB substrate p/n TMBE-1000.

## Disclaimer

This product is for research use only and is not intended for therapeutic or diagnostic applications. Please contact a technical service representative for more information. All products of animal origin manufactured by Rockland Immunochemicals are derived from starting materials of North American origin. Collection was performed in United States Department of Agriculture (USDA) inspected facilities and all materials have been inspected and certified to be free of disease and suitable for exportation. All properties listed are typical characteristics and are not specifications. All suggestions and data are offered in good faith but without guarantee as conditions and methods of use of our products are beyond our control. All claims must be made within 30 days following the date of delivery. The prospective user must determine the suitability of our materials before adopting them on a commercial scale. Suggested uses of our products are not recommendations to use our products in violation of any patent or as a license under any patent of Rockland Immunochemicals, Inc. If you require a commercial license to use this material and do not have one, then return this material, unopened to: Rockland Inc., P.O. BOX 5199, Limerick, Pennsylvania, USA.