



# SZABO SCANDIC

Part of Europa Biosite

## Produktinformation



Forschungsprodukte & Biochemikalien



Zellkultur & Verbrauchsmaterial



Diagnostik & molekulare Diagnostik



Laborgeräte & Service

Weitere Information auf den folgenden Seiten!  
See the following pages for more information!



### Lieferung & Zahlungsart

siehe unsere [Liefer- und Versandbedingungen](#)

### Zuschläge

- Mindermengenzuschlag
- Trockeneiszuschlag
- Gefahrgutzuschlag
- Expressversand

### SZABO-SCANDIC HandelsgmbH

Quellenstraße 110, A-1100 Wien

T. +43(0)1 489 3961-0

F. +43(0)1 489 3961-7

[mail@szabo-scandic.com](mailto:mail@szabo-scandic.com)

[www.szabo-scandic.com](http://www.szabo-scandic.com)

[linkedin.com/company/szaboscandic](https://www.linkedin.com/company/szaboscandic) 

Datasheet for 613-445-002

## Sheep IgG (H&L) Antibody DyLight™ 800 Conjugated

### Overview

<b>Description:</b>	Rabbit Anti-Sheep IgG (H&L) Antibody DyLight™ 800 Conjugated - 613-445-002
<b>Item No.:</b>	613-445-002
<b>Size:</b>	100 µg
<b>Applications:</b>	Dot Blot, WB
<b>Reactivity:</b>	Sheep
<b>Host Species:</b>	Rabbit

### Product Details

<b>Background:</b>	Anti-Sheep IgG (H&L) DyLight™ 800 Antibody generated in rabbit detects reactivity to sheep IgG. Secreted as part of the adaptive immune response by plasma B cells, immunoglobulin G constitutes 75% of serum immunoglobulins. Immunoglobulin G binds to viruses, bacteria, as well as fungi and facilitates their destruction or neutralization via agglutination (and thereby immobilizing them), activation of the complement cascade, and opsonization for phagocytosis. The whole IgG molecule possesses both the F(c) region, recognized by high-affinity Fc receptor proteins, as well as the F(ab) region possessing the epitope-recognition site. Both the Heavy and Light chains of the antibody molecule are present. Secondary Antibodies are available in a variety of formats and conjugate types. When choosing a secondary antibody product, consideration must be given to species and immunoglobulin specificity, conjugate type, fragment and chain specificity, level of cross-reactivity, and host-species source and fragment composition. This Anti-Sheep IgG Antibody is conjugated to DyLight™800.
<b>Synonyms:</b>	Rabbit Anti-Sheep IgG DyLight™ 800 Conjugated Antibody, Rabbit Anti-Sheep IgG Antibody DyLight™800 Conjugation
<b>Host Species:</b>	Rabbit
<b>Specificity:</b>	IgG (H&L)
<b>Conjugate:</b>	DyLight™ 800
<b>Clonality:</b>	Polyclonal
<b>Format:</b>	IgG
<b>F/P Ratio:</b>	2.8

## Target Details

<b>Reactivity:</b>	Sheep
<b>Immunogen:</b>	Sheep IgG whole molecule
<b>Purity/Specificity:</b>	This product was prepared from monospecific antiserum by immunoaffinity chromatography using Sheep IgG coupled to agarose beads followed by conjugation to fluorochrome and extensive dialysis against the buffer stated above. Assay by immunoelectrophoresis resulted in a single precipitin arc against anti-Rabbit Serum, Sheep IgG and Sheep Serum. This antibody will react with heavy chains of Sheep IgG and with light chains of most Sheep immunoglobulins.

## Application Details

<b>Tested Applications:</b>	Dot Blot, WB
<b>Application Note:</b>	Anti-Sheep IgG (H&L) DyLight™ 800 Antibody has been tested by dot blot and western blot and is designed for immunofluorescence microscopy, fluorescence based plate assays (FLISA) and fluorescent western blotting. This product is also suitable for multiplex analysis, including multicolor imaging, utilizing various commercial platforms. The emission spectra for this DyLight™ conjugate match the principle output wavelengths of most common fluorescence instrumentation.
<b>Assay Dilutions:</b>	All assays should be optimized by the user. Recommended dilutions (if any) may be listed below.
<b>FLISA:</b>	>1:20,000
<b>IF:</b>	>1:5,000
<b>WB:</b>	>1:10,000

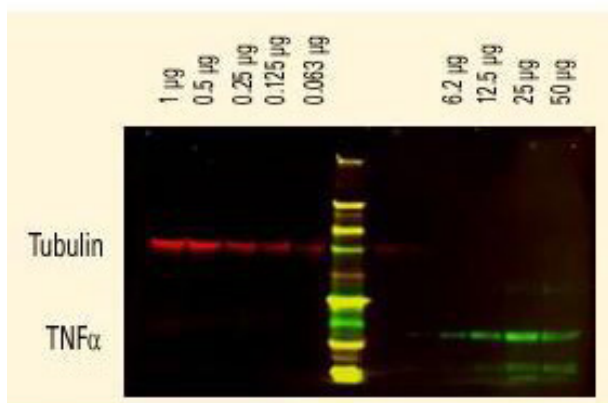
## Formulation

<b>Physical State:</b>	Lyophilized
<b>Concentration:</b>	1.0 mg/mL by UV absorbance at 280 nm
<b>Buffer:</b>	0.02 M Potassium Phosphate, 0.15 M Sodium Chloride, pH 7.2
<b>Preservative:</b>	0.01% (w/v) Sodium Azide
<b>Stabilizer:</b>	10 mg/mL Bovine Serum Albumin (BSA) - Immunoglobulin and Protease free
<b>Reconstitution Volume:</b>	100 µL
<b>Reconstitution Buffer:</b>	Restore with deionized water (or equivalent)

## Shipping & Handling

<b>Shipping Condition:</b>	Ambient
<b>Storage Condition:</b>	Store vial at 4° C prior to restoration. For extended storage aliquot contents and freeze at -20° C or below. Avoid cycles of freezing and thawing. Centrifuge product if not completely clear after standing at room temperature. This product is stable for several weeks at 4° C as an undiluted liquid. Dilute only prior to immediate use.
<b>Expiration:</b>	Expiration date is one (1) year from date of receipt.

## Images

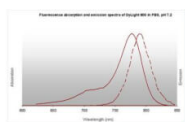


### Western Blot

DyLight™ dyes can be used for two-color western blot detection with low background and high signal. Anti-tubulin was detected using a DyLight™ 680 conjugate. Anti-TNF $\alpha$  was detected using a DyLight™ 800 conjugate. The image was captured using the Odyssey® Infrared Imaging System developed by LI-COR.

### Diagram

DyLight™ 800 Fluorescence Spectra.



## Diagram

Properties of DyLight™ Fluorescent Dyes.

Excitation	Emission	Excitation	Emission	Excitation	Emission
365 nm	460 nm	405 nm	480 nm	435 nm	505 nm
365 nm	460 nm	405 nm	480 nm	435 nm	505 nm
365 nm	460 nm	405 nm	480 nm	435 nm	505 nm
365 nm	460 nm	405 nm	480 nm	435 nm	505 nm
365 nm	460 nm	405 nm	480 nm	435 nm	505 nm
365 nm	460 nm	405 nm	480 nm	435 nm	505 nm
365 nm	460 nm	405 nm	480 nm	435 nm	505 nm
365 nm	460 nm	405 nm	480 nm	435 nm	505 nm
365 nm	460 nm	405 nm	480 nm	435 nm	505 nm
365 nm	460 nm	405 nm	480 nm	435 nm	505 nm

## References

- Jamshad M et al. The C-terminal tail of the bacterial translocation ATPase SecA modulates its activity. *Elife*. (2019)

## Disclaimer

This product is for research use only and is not intended for therapeutic or diagnostic applications. Please contact a technical service representative for more information. All products of animal origin manufactured by Rockland Immunochemicals are derived from starting materials of North American origin. Collection was performed in United States Department of Agriculture (USDA) inspected facilities and all materials have been inspected and certified to be free of disease and suitable for exportation. All properties listed are typical characteristics and are not specifications. All suggestions and data are offered in good faith but without guarantee as conditions and methods of use of our products are beyond our control. All claims must be made within 30 days following the date of delivery. The prospective user must determine the suitability of our materials before adopting them on a commercial scale. Suggested uses of our products are not recommendations to use our products in violation of any patent or as a license under any patent of Rockland Immunochemicals, Inc. If you require a commercial license to use this material and do not have one, then return this material, unopened to: Rockland Inc., P.O. BOX 5199, Limerick, Pennsylvania, USA.