



SZABO SCANDIC

Part of Europa Biosite

Produktinformation



Forschungsprodukte & Biochemikalien



Zellkultur & Verbrauchsmaterial



Diagnostik & molekulare Diagnostik



Laborgeräte & Service

Weitere Information auf den folgenden Seiten!
See the following pages for more information!



Lieferung & Zahlungsart

siehe unsere [Liefer- und Versandbedingungen](#)

Zuschläge

- Mindermengenzuschlag
- Trockeneiszuschlag
- Gefahrgutzuschlag
- Expressversand

SZABO-SCANDIC HandelsgmbH

Quellenstraße 110, A-1100 Wien

T. +43(0)1 489 3961-0

F. +43(0)1 489 3961-7

mail@szabo-scandic.com

www.szabo-scandic.com

[linkedin.com/company/szaboscandic](https://www.linkedin.com/company/szaboscandic) 

Datasheet for 613-701-168**Sheep IgG (H&L) Antibody Pre-adsorbed****Overview**

Description:	Donkey Anti-Sheep IgG (H&L) Antibody (Min X Ch GP Ham Hs Hu Ms Rb & Rt Serum Proteins) - 613-701-168
Item No.:	613-701-168
Size:	1 mg
Applications:	ELISA
Reactivity:	Sheep
Host Species:	Donkey

Product Details

Background:	Anti-Sheep IgG antibody generated in donkey detects specifically sheep IgG. This secondary antibody anti-Sheep is ideal for investigators who routinely perform ELISA, Sandwich ELISA, titration assays, western-blot, immunoprecipitation and more generally immunoassays.
Synonyms:	Donkey anti-Sheep IgG Antibody, Dk-a-Sheep IgG, Sheep Antibody in Donkey, Sheep Secondary Antibody
Host Species:	Donkey
Specificity:	IgG (H&L)
Clonality:	Polyclonal
Format:	IgG

Target Details

Reactivity:	Sheep
Immunogen Type:	Native Protein
Immunogen:	Anti-Sheep IgG (H&L) was produced by repeated immunization with Sheep IgG whole molecule in donkey.

Purity/Specificity:	This product was prepared from monospecific antiserum by immunoaffinity chromatography using Sheep IgG coupled to agarose beads followed by solid phase adsorption(s) to remove any unwanted reactivities. Assay by immunoelectrophoresis resulted in a single precipitin arc against anti-Donkey Serum, Sheep IgG and Sheep Serum. No reaction was observed against Chicken, Guinea Pig, Hamster, Horse, Human, Mouse, Rabbit and Rat Serum Proteins.
----------------------------	--

Application Details

Tested Applications:	ELISA
Application Note:	Anti-Sheep IgG (H&L) has been tested by ELISA and is suitable for use in immunoelectrophoresis, western-blot, competitive western-blot, ELISA and competitive ELISA assays. Specific conditions for reactivity and signal detection should be optimized by the end user.
Assay Dilutions:	All assays should be optimized by the user. Recommended dilutions (if any) may be listed below.
ELISA:	1:39,200 - 1:59,200
IHC:	1:1,000 - 1:5,000
WB:	1:2,000 - 1:10,000

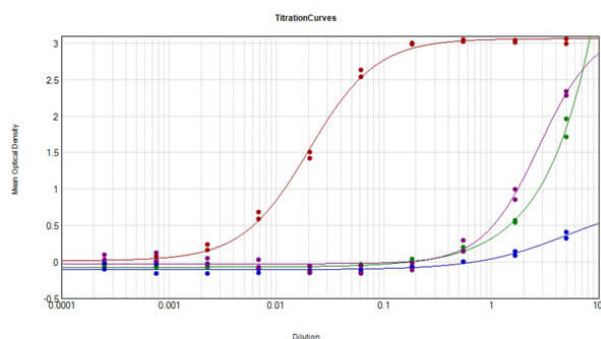
Formulation

Physical State:	Liquid (sterile filtered)
Concentration:	1.0 mg/mL by UV absorbance at 280 nm
Buffer:	0.02 M Potassium Phosphate, 0.15 M Sodium Chloride, pH 7.2
Preservative:	0.01% (w/v) Sodium Azide
Stabilizer:	None

Shipping & Handling

Shipping Condition:	Wet Ice
Storage Condition:	Store vial at 4° C prior to opening. This product is stable for several weeks at 4° C as an undiluted liquid. Dilute only prior to immediate use. For extended storage aliquot contents and freeze at -20° C or below. Avoid cycles of freezing and thawing.
Expiration:	Expiration date is one (1) year from date of receipt.

Images



ELISA

ELISA Results of Donkey Anti-Sheep IgG Antibody (Min X Ch GP Ham Hs Hu Ms Rb Rt Serum Proteins) tested against purified Sheep IgG Mx8. Each well was coated in duplicate with 1.0 µg of Sheep IgG (p/n 013-0102) [Red Line], Chicken IgG (p/n 003-0102) [Green Line], Guinea Pig IgG (p/n 006-0102) [Blue Line], Hamster IgG (p/n 007-0102) [Purple Line], Horse IgG (p/n 008-0102), Human IgG (p/n 009-0102), Mouse IgG (p/n 010-0102), Rabbit IgG (p/n 011-0102), and Rat IgG (p/n 012-0102). The working dilution of Sheep IgG MX8 is 1:49,000. The starting dilution of antibody was 5µg/ml and the X-axis represents the Log10 of a 3-fold dilution. This titration is a 4-parameter curve fit where the IC50 is defined as the titer of the antibody. Assay performed using HRP Conjugate Stabilizer (p/n MB-076), Goat Anti-Donkey IgG HRP conjugated (p/n 616-4302), and TMB substrate (p/n TMBE-1000).

Disclaimer

This product is for research use only and is not intended for therapeutic or diagnostic applications. Please contact a technical service representative for more information. All products of animal origin manufactured by Rockland Immunochemicals are derived from starting materials of North American origin. Collection was performed in United States Department of Agriculture (USDA) inspected facilities and all materials have been inspected and certified to be free of disease and suitable for exportation. All properties listed are typical characteristics and are not specifications. All suggestions and data are offered in good faith but without guarantee as conditions and methods of use of our products are beyond our control. All claims must be made within 30 days following the date of delivery. The prospective user must determine the suitability of our materials before adopting them on a commercial scale. Suggested uses of our products are not recommendations to use our products in violation of any patent or as a license under any patent of Rockland Immunochemicals, Inc. If you require a commercial license to use this material and do not have one, then return this material, unopened to: Rockland Inc., P.O. BOX 5199, Limerick, Pennsylvania, USA.