



SZABO SCANDIC

Part of Europa Biosite

Produktinformation



Forschungsprodukte & Biochemikalien



Zellkultur & Verbrauchsmaterial



Diagnostik & molekulare Diagnostik



Laborgeräte & Service

Weitere Information auf den folgenden Seiten!
See the following pages for more information!



Lieferung & Zahlungsart

siehe unsere [Liefer- und Versandbedingungen](#)

Zuschläge

- Mindermengenzuschlag
- Trockeneiszuschlag
- Gefahrgutzuschlag
- Expressversand

SZABO-SCANDIC Handels GmbH

Quellenstraße 110, A-1100 Wien

T. +43(0)1 489 3961-0

F. +43(0)1 489 3961-7

mail@szabo-scandic.com

www.szabo-scandic.com

[linkedin.com/company/szaboscandic](https://www.linkedin.com/company/szaboscandic)



Datasheet for 613-7202

Sheep IgG (H&L) Antibody Fluorescein Conjugated**Overview**

| | |
|----------------------|--|
| Description: | Donkey Anti-Sheep IgG (H&L) Antibody Fluorescein Conjugated - 613-7202 |
| Item No.: | 613-7202 |
| Size: | 2 mg |
| Applications: | Dot Blot |
| Reactivity: | Sheep |
| Host Species: | Donkey |

Product Details

| | |
|----------------------|---|
| Background: | Anti-Sheep IgG (H&L) fluorescein Antibody generated in donkey detects reactivity to sheep IgG. Secreted as part of the adaptive immune response by plasma B cells, immunoglobulin G constitutes 75% of serum immunoglobulins. Immunoglobulin G binds to viruses, bacteria, as well as fungi and facilitates their destruction or neutralization via agglutination (and thereby immobilizing them), activation of the complement cascade, and opsonization for phagocytosis. The whole IgG molecule possesses both the F(c) region, recognized by high-affinity Fc receptor proteins, as well as the F(ab) region possessing the epitope-recognition site. Both the Heavy and Light chains of the antibody molecule are present. Secondary Antibodies are available in a variety of formats and conjugate types. When choosing a secondary antibody product, consideration must be given to species and immunoglobulin specificity, conjugate type, fragment and chain specificity, level of cross-reactivity, and host-species source and fragment composition. This Anti-Sheep IgG is conjugated to fluorescein. |
| Synonyms: | Donkey Anti-Sheep IgG fluorescein Conjugated Antibody, Donkey Anti-Sheep IgG Antibody FITC Conjugation |
| Host Species: | Donkey |
| Specificity: | IgG (H&L) |
| Conjugate: | Fluorescein (FITC) |
| Clonality: | Polyclonal |
| Format: | IgG |
| F/P Ratio: | 2.4 |

Target Details

| | |
|----------------------------|---|
| Reactivity: | Sheep |
| Immunogen: | Sheep IgG whole molecule |
| Purity/Specificity: | This product was prepared from monospecific antiserum by immunoaffinity chromatography using Sheep IgG coupled to agarose beads. Assay by immunoelectrophoresis resulted in a single precipitin arc against anti-Fluorescein, anti-Donkey Serum, Sheep IgG and Sheep Serum. |

Application Details

| | |
|-----------------------------|--|
| Tested Applications: | Dot Blot |
| Application Note: | Anti-Sheep IgG (H&L) fluorescein Antibody has been tested by dot blot and is designed for immunofluorescence microscopy, fluorescence based plate assays (FLISA) and fluorescent western blotting. This product is also suitable for multiplex analysis, including multicolor imaging, utilizing various commercial platforms. |
| Assay Dilutions: | All assays should be optimized by the user. Recommended dilutions (if any) may be listed below. |
| FC: | 1:500 - 1:2,500 |
| FLISA: | 1:10,000 - 1:50,000 |
| IF: | 1:1,000 - 1:5,000 |

Formulation

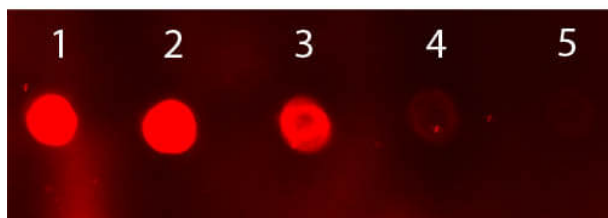
| | |
|-------------------------------|--|
| Physical State: | Lyophilized |
| Concentration: | 2.0 mg/mL by UV absorbance at 280 nm |
| Buffer: | 0.02 M Potassium Phosphate, 0.15 M Sodium Chloride, pH 7.2 |
| Preservative: | 0.01% (w/v) Sodium Azide |
| Stabilizer: | 10 mg/mL Bovine Serum Albumin (BSA) - Immunoglobulin and Protease free |
| Reconstitution Volume: | 1.0 mL |
| Reconstitution Buffer: | Restore with deionized water (or equivalent) |

Shipping & Handling

| | |
|----------------------------|---------|
| Shipping Condition: | Ambient |
|----------------------------|---------|

| | |
|---------------------------|---|
| Storage Condition: | Store vial at 4° C prior to restoration. For extended storage aliquot contents and freeze at -20° C or below. Avoid cycles of freezing and thawing. Centrifuge product if not completely clear after standing at room temperature. This product is stable for several weeks at 4° C as an undiluted liquid. Dilute only prior to immediate use. |
| Expiration: | Expiration date is one (1) year from date of receipt. |

Images



Dot Blot

Dot Blot of Sheep IgG Antibody Fluorescein Conjugated.

Antigen: Sheep IgG Load: Lane 1 - 50 ng Lane 2 - 16.67 ng
Lane 3 - 5.56 ng Lane 4 - 1.85 ng Lane 5 - 0.62 ng. Primary
antibody: none. Secondary antibody: Sheep IgG Antibody
Fluorescein Conjugated 1:1,000 for 60 min at RT. Block: MB-
070 for 1 HR at RT.

Disclaimer

This product is for research use only and is not intended for therapeutic or diagnostic applications. Please contact a technical service representative for more information. All products of animal origin manufactured by Rockland Immunochemicals are derived from starting materials of North American origin. Collection was performed in United States Department of Agriculture (USDA) inspected facilities and all materials have been inspected and certified to be free of disease and suitable for exportation. All properties listed are typical characteristics and are not specifications. All suggestions and data are offered in good faith but without guarantee as conditions and methods of use of our products are beyond our control. All claims must be made within 30 days following the date of delivery. The prospective user must determine the suitability of our materials before adopting them on a commercial scale. Suggested uses of our products are not recommendations to use our products in violation of any patent or as a license under any patent of Rockland Immunochemicals, Inc. If you require a commercial license to use this material and do not have one, then return this material, unopened to: Rockland Inc., P.O. BOX 5199, Limerick, Pennsylvania, USA.