



# SZABO SCANDIC

Part of Europa Biosite

## Produktinformation



Forschungsprodukte & Biochemikalien



Zellkultur & Verbrauchsmaterial



Diagnostik & molekulare Diagnostik



Laborgeräte & Service

Weitere Information auf den folgenden Seiten!  
See the following pages for more information!



### Lieferung & Zahlungsart

siehe unsere [Liefer- und Versandbedingungen](#)

### Zuschläge

- Mindermengenzuschlag
- Trockeneiszuschlag
- Gefahrgutzuschlag
- Expressversand

### SZABO-SCANDIC HandelsgmbH

Quellenstraße 110, A-1100 Wien

T. +43(0)1 489 3961-0

F. +43(0)1 489 3961-7

[mail@szabo-scandic.com](mailto:mail@szabo-scandic.com)

[www.szabo-scandic.com](http://www.szabo-scandic.com)

[linkedin.com/company/szaboscandic](https://www.linkedin.com/company/szaboscandic) 

**Datasheet for 617-101-007****Monkey IgM (mu chain) Antibody****Overview**

<b>Description:</b>	Goat Anti-Monkey IgM (mu chain) Antibody - 617-101-007
<b>Item No.:</b>	617-101-007
<b>Size:</b>	1 mg
<b>Applications:</b>	Dot Blot, ELISA, WB, Multiplex
<b>Reactivity:</b>	Monkey
<b>Host Species:</b>	Goat

**Product Details**

<b>Background:</b>	Anti-Monkey IgM antibody specifically detects monkey IgM. Immunoglobulin M is the largest antibody isotype and the first to be secreted against an initial exposure to antigen. IgM is predominantly produced in the spleen. Formed from covalently linking 5 immunoglobulins together, the approximate molecular weight of IgM is 900kDa and possesses 10 binding sites (though due to the size of most antigens, not all sites are capable of binding at once). Due to this large size, IgM is typically isolated to the serum. Anti-Monkey IgM antibody is ideal for investigators in Immunology, Microbiology, and Cell Biology.
<b>Synonyms:</b>	Goat Anti-Monkey IgM mu chain Antibody, Goat Anti-Monkey IgM Antibody
<b>Host Species:</b>	Goat
<b>Specificity:</b>	IgM $\mu$ chain
<b>Clonality:</b>	Polyclonal
<b>Format:</b>	IgG

**Target Details**

<b>Reactivity:</b>	Monkey
<b>Immunogen Type:</b>	Native Protein
<b>Immunogen:</b>	Monkey IgM whole molecule

**Purity/Specificity:** This product was prepared from monospecific antiserum by immunoaffinity chromatography using Monkey IgM coupled to agarose beads followed by solid phase adsorption(s) to remove any unwanted reactivities. Assay by immunoelectrophoresis resulted in a single precipitin arc against anti-Goat Serum, Monkey IgM and Monkey Serum. No reaction was observed against other monkey heavy or light chain proteins.

**Relevant Links:**

- [617-101-007 SDS](#)

## Application Details

<b>Tested Applications:</b>	Dot Blot, ELISA, WB
<b>Suggested Applications:</b>	Multiplex (Based on references)
<b>Application Note:</b>	Anti-Monkey IgM (mu chain) has been tested by ELISA, dot blot, and western blot and is suitable for use in immunoelectrophoresis, western-blot, competitive western-blot, ELISA and competitive ELISA assays. Specific conditions for reactivity and signal detection should be optimized by the end user.
<b>Assay Dilutions:</b>	All assays should be optimized by the user. Recommended dilutions (if any) may be listed below.
<b>ELISA:</b>	1:16,700 - 1:17,700
<b>IHC:</b>	1:500 - 1:2,500
<b>WB:</b>	1:1,000 - 1:5,000

## Formulation

<b>Physical State:</b>	Liquid (sterile filtered)
<b>Concentration:</b>	1.05 mg/mL by UV absorbance at 280 nm
<b>Buffer:</b>	0.02 M Potassium Phosphate, 0.15 M Sodium Chloride, pH 7.2
<b>Preservative:</b>	0.01% (w/v) Sodium Azide

## Shipping & Handling

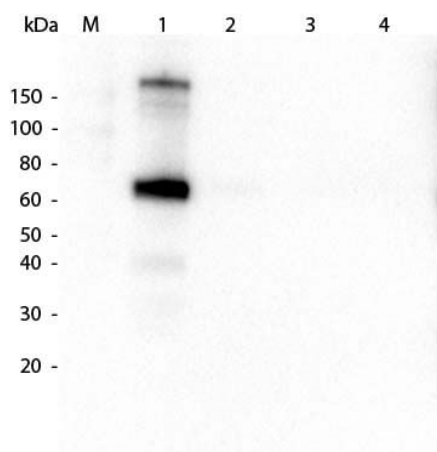
<b>Shipping Condition:</b>	Wet Ice
<b>Storage Condition:</b>	Store vial at 4° C prior to opening. This product is stable for several weeks at 4° C as an undiluted liquid. Dilute only prior to immediate use. For extended storage aliquot contents and freeze at -20° C or below. Avoid cycles of freezing and thawing.
<b>Expiration:</b>	Expiration date is one (1) year from date of receipt.

## Images

Product	Gt-a-Monkey IgG	Gt-a-Monkey IgA	Gt-a-Monkey IgM
Rhesus Serum	+	+	+
Baboon Serum	+	+	+
Cynomolgus Serum	+	+	+
Rhesus IgG	+		
Human IgA		+	
Human IgM			+

### Diagram

This table displays additional reactivity among various species of serum and immunoglobulin. A (+) indicates antibody reactivity to the corresponding target.



### Western Blot

Western Blot of Goat anti-Monkey IgM (mu chain) antibody. Lane 1: Monkey IgM (p/n 017-0107). Lane 2: Monkey IgG (p/n 017-0102). Lane 3: Monkey IgG (A and M Free). Lane 4: Monkey IgG F(c). Load: 50 ng per lane. Primary antibody: Goat anti-Monkey IgM (mu chain) antibody at 1:1,000 for 1 hour at RT. Secondary antibody: Peroxidase conjugated Dk-a-Gt IgG at 1:40,000 for 30 min at RT. Block: MB-070 for 30 min at RT. Predicted/Observed size: 70 kDa, 70 kDa for Monkey IgM (mu chain).

## References

- Otero CE et al. Relationship of maternal cytomegalovirus-specific antibody responses and viral load to vertical transmission risk following primary maternal infection in a rhesus macaque model. *PLoS Pathog.* (2023)
- Ruiz, W. et al. Kinetics and isotype profile of antibody responses in rhesus macaques induced following vaccination with HPV 6, 11, 16 and 18 L1-virus-like particles formulated with or without Merck aluminum adjuvant. *Journal of Immune Based Therapies and Vaccines* (2005)

## Disclaimer

This product is for research use only and is not intended for therapeutic or diagnostic applications. Please contact a technical service representative for more information. All products of animal origin manufactured by Rockland Immunochemicals are derived from starting materials of North American origin. Collection was performed in United States Department of Agriculture (USDA) inspected facilities and all materials have been inspected and certified to be free of disease and suitable for exportation. All properties listed are typical characteristics and are not specifications. All suggestions and data are offered in good faith but without guarantee as conditions and methods of use of our products are beyond our control. All claims must be made within 30 days following the date of delivery. The prospective user must determine the suitability of our materials before adopting them on a commercial scale. Suggested uses of our products are not recommendations to use our products in violation of any patent or as a license under any patent of Rockland Immunochemicals, Inc. If you require a commercial license to use this material and do not have one, then return this material, unopened to: Rockland Inc., P.O. BOX 5199, Limerick, Pennsylvania, USA.