



# SZABO SCANDIC

Part of Europa Biosite

## Produktinformation



Forschungsprodukte & Biochemikalien



Zellkultur & Verbrauchsmaterial



Diagnostik & molekulare Diagnostik



Laborgeräte & Service

Weitere Information auf den folgenden Seiten!  
See the following pages for more information!



### Lieferung & Zahlungsart

siehe unsere [Liefer- und Versandbedingungen](#)

### Zuschläge

- Mindermengenzuschlag
- Trockeneiszuschlag
- Gefahrgutzuschlag
- Expressversand

### SZABO-SCANDIC HandelsgmbH

Quellenstraße 110, A-1100 Wien

T. +43(0)1 489 3961-0

F. +43(0)1 489 3961-7

[mail@szabo-scandic.com](mailto:mail@szabo-scandic.com)

[www.szabo-scandic.com](http://www.szabo-scandic.com)

[linkedin.com/company/szaboscandic](https://www.linkedin.com/company/szaboscandic) 

## Datasheet for 617-101-012

**Monkey IgG gamma Antibody****Overview**

<b>Description:</b>	Goat Anti-Monkey IgG (gamma chain) Antibody - 617-101-012
<b>Item No.:</b>	617-101-012
<b>Size:</b>	1 mg
<b>Applications:</b>	Dot Blot, ELISA, WB, Multiplex, Purification
<b>Reactivity:</b>	Monkey
<b>Host Species:</b>	Goat

**Product Details**

<b>Background:</b>	Anti-Monkey IgG (gamma chain) antibody generated in goat detects specifically monkey IgG (gamma chain). This secondary antibody anti-Monkey is ideal for investigators who routinely perform ELISA, Sandwich ELISA, titration assays, western-blot, immunoprecipitation and more generally immunoassays.
<b>Synonyms:</b>	goat anti-Monkey IgG (gamma chain) antibody
<b>Host Species:</b>	Goat
<b>Specificity:</b>	IgG (gamma chain)
<b>Clonality:</b>	Polyclonal
<b>Format:</b>	IgG

**Target Details**

<b>Reactivity:</b>	Monkey
<b>Immunogen Type:</b>	Native Protein
<b>Immunogen:</b>	Anti-Monkey IgG (gamma chain) was produced by repeated immunization with monkey IgG gamma heavy chain in goat.
<b>Purity/Specificity:</b>	This product was prepared from monospecific antiserum by immunoaffinity chromatography using Monkey IgG coupled to agarose beads followed by solid phase adsorption(s) to remove any unwanted reactivities. Assay by immunoelectrophoresis resulted in a single precipitin arc against anti-Goat Serum, Monkey IgG and Monkey Serum.

## Application Details

<b>Tested Applications:</b>	Dot Blot, ELISA, WB
<b>Suggested Applications:</b>	Multiplex, Purification (Based on references)
<b>Application Note:</b>	Anti-Monkey IgG (gamma chain) has been tested by ELISA, dot blot, and western blot and is suitable for use in immunoelectrophoresis, western-blot, competitive western-blot, ELISA and competitive ELISA assays. Specific conditions for reactivity and signal detection should be optimized by the end user.
<b>Assay Dilutions:</b>	All assays should be optimized by the user. Recommended dilutions (if any) may be listed below.
<b>ELISA:</b>	1:75000 - 1:175,000
<b>IHC:</b>	1:1,000 - 1:5,000
<b>WB:</b>	1:2,000 - 1:10,000

## Formulation

<b>Physical State:</b>	Liquid (sterile filtered)
<b>Concentration:</b>	1.26 mg/mL by UV absorbance at 280 nm
<b>Buffer:</b>	0.02 M Potassium Phosphate, 0.15 M Sodium Chloride, pH 7.2
<b>Preservative:</b>	0.01% (w/v) Sodium Azide

## Shipping & Handling

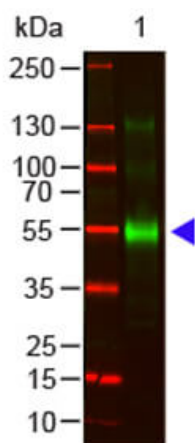
<b>Shipping Condition:</b>	Wet Ice
<b>Storage Condition:</b>	Store vial at 4° C prior to opening. This product is stable for several weeks at 4° C as an undiluted liquid. Dilute only prior to immediate use. For extended storage aliquot contents and freeze at -20° C or below. Avoid cycles of freezing and thawing.
<b>Expiration:</b>	Expiration date is one (1) year from date of receipt.

## Images

### Diagram

This table displays additional reactivity among various species of serum and immunoglobulin. A (+) indicates antibody reactivity to the corresponding target.

Product	Gt-a-Monkey IgG	Gt-a-Monkey IgA	Gt-a-Monkey IgM
Rhesus Serum	+	+	+
Baboon Serum	+	+	+
Cynomolgus Serum	+	+	+
Rhesus IgG	+		
Human IgA		+	
Human IgM			+



### Western Blot

Western Blot of Goat anti-Monkey IgG gamma Antibody. Lane 1: Monkey IgG (p/n 017-0102). Lane 2: None. Load: 100 ng per lane. Primary antibody: Monkey IgG gamma Antibody at 1:1000 for overnight at 4°C. Secondary antibody: DyLight™ 800 goat secondary antibody at 1:20,000 for 30 min at RT. Block: MB-070 for 30 min at RT. Predicted/Observed size: 55 kDa, 55 kDa for Monkey IgG Gamma. Other band(s): None.

## References

- Boniface Pongombo Lombe et al. Mapping of Antibody Epitopes on the Crimean-Congo Hemorrhagic Fever Virus Nucleoprotein. *Viruses*. (2022)
- Charles TP et al. The C3/465 glycan hole cluster in BG505 HIV-1 envelope is the major neutralizing target involved in preventing mucosal SHIV infection. *PLoS Pathog.* (2021)
- Powell RL. et al. An HIV vaccine targeting the V2 region of Envelope induces a highly durable polyfunctional Fc-mediated antibody response in rhesus macaques. *J Virol.* (2020)
- Silva de Castro I, Gordon SN, Liu J, et al. Expression of CD40L by the ALVAC-Simian Immunodeficiency Virus Vector Abrogates T Cell Responses in Macaques. *J Virol.* (2020)
- Fouda GGA et al. Mucosal immunization of lactating female rhesus monkeys with a transmitted/founder HIV-1 envelope induces strong Env-specific IgA antibody responses in breast milk. *J Viral.* (2013)
- Marassá AM, Paula MB, Gomes AC, Consales CA. Biotin-avidin sandwich elisa with specific human isotypes IgG1 and IgG4 for Culicidae mosquito blood meal identification from an epizootic yellow fever area in Brazil. *Scientific Electronic Library Online: Journal of Venomous Animals and Toxins including Tropical Diseases* (2009)
- Ruiz, W. et al. Kinetics and isotype profile of antibody responses in rhesus macaques induced following vaccination with HPV 6, 11, 16 and 18 L1-virus-like particles formulated with or without Merck aluminum adjuvant. *Journal of Immune Based Therapies and Vaccines* (2005)

## Disclaimer

This product is for research use only and is not intended for therapeutic or diagnostic applications. Please contact a technical service representative for more information. All products of animal origin manufactured by Rockland Immunochemicals are derived from starting materials of North American origin. Collection was performed in United States Department of Agriculture (USDA) inspected facilities and all materials have been inspected and certified to be free of disease and suitable for exportation. All properties listed are typical characteristics and are not specifications. All suggestions and data are offered in good faith but without guarantee as conditions and methods of use of our products are beyond our control. All claims must be made within 30 days following the date of delivery. The prospective user must determine the suitability of our materials before adopting them on a commercial scale. Suggested uses of our products are not recommendations to use our products in violation of any patent or as a license under any patent of Rockland Immunochemicals, Inc. If you require a commercial license to use this material and do not have one, then return this material, unopened to: Rockland Inc., P.O. BOX 5199, Limerick, Pennsylvania, USA.