



SZABO SCANDIC

Part of Europa Biosite

Produktinformation



Forschungsprodukte & Biochemikalien



Zellkultur & Verbrauchsmaterial



Diagnostik & molekulare Diagnostik



Laborgeräte & Service

Weitere Information auf den folgenden Seiten!
See the following pages for more information!



Lieferung & Zahlungsart

siehe unsere [Liefer- und Versandbedingungen](#)

Zuschläge

- Mindermengenzuschlag
- Trockeneiszuschlag
- Gefahrgutzuschlag
- Expressversand

SZABO-SCANDIC HandelsgmbH

Quellenstraße 110, A-1100 Wien

T. +43(0)1 489 3961-0

F. +43(0)1 489 3961-7

mail@szabo-scandic.com

www.szabo-scandic.com

[linkedin.com/company/szaboscandic](https://www.linkedin.com/company/szaboscandic) 

Datasheet for 617-103-007

Monkey IgM mu Antibody Peroxidase Conjugated**Overview**

Description:	Goat Anti-Monkey IgM (mu chain) Antibody Peroxidase Conjugated - 617-103-007
Item No.:	617-103-007
Size:	1 mg
Applications:	Dot Blot, ELISA, WB
Reactivity:	Monkey
Host Species:	Goat

Product Details

Background:	Anti-Monkey IgM (mu chain) peroxidase conjugated antibody generated in goat detects specifically Monkey IgM (mu chain). Immunoglobulin M is the largest antibody isotype and the first to be secreted against an initial exposure to antigen. IgM is predominantly produced in the spleen. Formed from covalently linking 5 immunoglobulins together, the approximate molecular weight of IgM is 900kDa and possesses 10 binding sites (though due to the size of most antigens, not all sites are capable of binding at once). Due to this large size, IgM is typically isolated to the serum. Anti-Monkey IgM antibody is ideal for investigators in Immunology, Microbiology, and Cell Biology.
Synonyms:	Goat Anti-Monkey IgM Antibody peroxidase Conjugation, Goat Anti-Monkey IgM HRP Conjugated Antibody
Host Species:	Goat
Specificity:	IgM μ chain
Conjugate:	Peroxidase (HRP)
Clonality:	Polyclonal
Format:	IgG

Target Details

Reactivity:	Monkey
Immunogen Type:	Native Protein

Immunogen:	Monkey IgM whole molecule
Purity/Specificity:	This product was prepared from monospecific antiserum by immunoaffinity chromatography using Monkey IgM coupled to agarose beads followed by solid phase adsorption(s) to remove any unwanted reactivities. Assay by immunoelectrophoresis resulted in a single precipitin arc against anti-Peroxidase, anti-Goat Serum, Monkey IgM and Monkey Serum. No reaction was observed against other Monkey heavy or light chain proteins.

Application Details

Tested Applications:	Dot Blot, ELISA, WB
Application Note:	Anti-Monkey IgM (mu chain) peroxidase conjugated antibody has been tested by ELISA, dot blot, and western blot and is suitable for immunoblotting (western or dot blot), ELISA, immunoperoxidase electron microscopy and immunohistochemistry as well as other peroxidase-antibody based enzymatic assays requiring lot-to-lot consistency.
Assay Dilutions:	All assays should be optimized by the user. Recommended dilutions (if any) may be listed below.
ELISA:	1:65,000 - 1:160,000
IHC:	1:500-1:2,500
WB:	1:1,000-1:5,000

Formulation

Physical State:	Lyophilized
Concentration:	1.0 mg/mL by UV absorbance at 280 nm
Buffer:	0.02 M Potassium Phosphate, 0.15 M Sodium Chloride, pH 7.2
Preservative:	0.01% (w/v) Gentamicin Sulfate. Do NOT add Sodium Azide!
Stabilizer:	10 mg/mL Bovine Serum Albumin (BSA) - Immunoglobulin and Protease free
Reconstitution Volume:	1.0 mL
Reconstitution Buffer:	Restore with deionized water (or equivalent)

Shipping & Handling

Shipping Condition:	Ambient
----------------------------	---------

Storage Condition: Store vial at 4° C prior to restoration. For extended storage aliquot contents and freeze at -20° C or below. Avoid cycles of freezing and thawing. Centrifuge product if not completely clear after standing at room temperature. This product is stable for several weeks at 4° C as an undiluted liquid. Dilute only prior to immediate use.

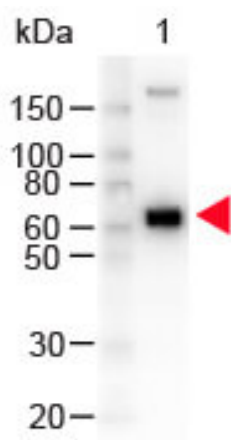
Expiration: Expiration date is one (1) year from date of receipt.

Images

Product	Gt-a-Monkey IgG	Gt-a-Monkey IgA	Gt-a-Monkey IgM
Rhesus Serum	+	+	+
Baboon Serum	+	+	+
Cynomolgus Serum	+	+	+
Rhesus IgG	+		
Human IgA		+	
Human IgM			+

Diagram

This table displays additional reactivity among various species of serum and immunoglobulin. A (+) indicates antibody reactivity to the corresponding target.



Western Blot

Western Blot of Peroxidase conjugated Goat anti-Monkey IgM mu antibody. Lane 1: Monkey IgM. Lane 2: none. Load: 100 ng per lane. Primary antibody: none. Secondary antibody: Peroxidase goat secondary antibody at 1:1,000 for 60 min at RT. Block: MB-070 for 30 min at RT. Observed size: 72 kDa for Rabbit IgG. Other band(s): none.

References

- Smith TJ. et al. Engineered IgM and IgG cleaving enzymes for mitigating antibody neutralization and complement activation in AAV gene transfer. *Mol Ther.* (2024)

Disclaimer

This product is for research use only and is not intended for therapeutic or diagnostic applications. Please contact a technical service representative for more information. All products of animal origin manufactured by Rockland Immunochemicals are derived from starting materials of North American origin. Collection was performed in United States Department of Agriculture (USDA) inspected facilities and all materials have been inspected and certified to be free of disease and suitable for exportation. All properties listed are typical characteristics and are not specifications. All suggestions and data are offered in good faith but without guarantee as conditions and methods of use of our products are beyond our control. All claims must be made within 30 days following the date of delivery. The prospective user must determine the suitability of our materials before adopting them on a commercial scale. Suggested uses of our products are not recommendations to use our products in violation of any patent or as a license under any patent of Rockland Immunochemicals, Inc. If you require a commercial license to use this material and do not have one, then return this material, unopened to: Rockland Inc., P.O. BOX 5199, Limerick, Pennsylvania, USA.