



# SZABO SCANDIC

Part of Europa Biosite

## Produktinformation



Forschungsprodukte & Biochemikalien



Zellkultur & Verbrauchsmaterial



Diagnostik & molekulare Diagnostik



Laborgeräte & Service

Weitere Information auf den folgenden Seiten!  
See the following pages for more information!



### Lieferung & Zahlungsart

siehe unsere [Liefer- und Versandbedingungen](#)

### Zuschläge

- Mindermengenzuschlag
- Trockeneiszuschlag
- Gefahrgutzuschlag
- Expressversand

### SZABO-SCANDIC HandelsgmbH

Quellenstraße 110, A-1100 Wien

T. +43(0)1 489 3961-0

F. +43(0)1 489 3961-7

[mail@szabo-scandic.com](mailto:mail@szabo-scandic.com)

[www.szabo-scandic.com](http://www.szabo-scandic.com)

[linkedin.com/company/szaboscandic](https://www.linkedin.com/company/szaboscandic) 

## Datasheet for 617-401-002

**Monkey IgG (H&L) Antibody****Overview**

<b>Description:</b>	Rabbit Anti-Monkey IgG (H&L) Antibody - 617-401-002
<b>Item No.:</b>	617-401-002
<b>Size:</b>	1 mg
<b>Applications:</b>	ELISA, WB
<b>Reactivity:</b>	Monkey
<b>Host Species:</b>	Rabbit

**Product Details**

<b>Background:</b>	Anti-Monkey IgG (H&L) antibody generated in rabbit detects specifically monkey IgG heavy and light chains. This secondary antibody anti-Monkey is ideal for investigators who routinely perform ELISA, Sandwich ELISA, titration assays, western-blot, immunoprecipitation and more generally immunoassays.
<b>Synonyms:</b>	rabbit anti-Monkey IgG Antibody, Rb-a-Monkey IgG (H&L), Monkey Antibody in rabbit, Monkey IgG Secondary Antibody
<b>Host Species:</b>	Rabbit
<b>Specificity:</b>	IgG (H&L)
<b>Clonality:</b>	Polyclonal
<b>Format:</b>	IgG

**Target Details**

<b>Reactivity:</b>	Monkey
<b>Immunogen Type:</b>	Native Protein
<b>Immunogen:</b>	Anti-Monkey IgG (H&L) was produced by repeated immunization with monkey IgG in rabbit.
<b>Purity/Specificity:</b>	This product was prepared from monospecific antiserum by immunoaffinity chromatography using Monkey IgG coupled to agarose beads. Assay by immunoelectrophoresis resulted in a single precipitin arc against anti-Rabbit Serum, Monkey IgG and Monkey Serum.

## Application Details

<b>Tested Applications:</b>	ELISA, WB
<b>Application Note:</b>	Anti-Monkey IgG (H&L) has been tested by ELISA and western blot and is suitable for use in immunoelectrophoresis, western-blot, competitive western-blot, ELISA and competitive ELISA assays. Specific conditions for reactivity and signal detection should be optimized by the end user.
<b>Assay Dilutions:</b>	All assays should be optimized by the user. Recommended dilutions (if any) may be listed below.
<b>ELISA:</b>	1:50,000 - 1:100,000
<b>WB:</b>	1:10,000 - 1:60,000

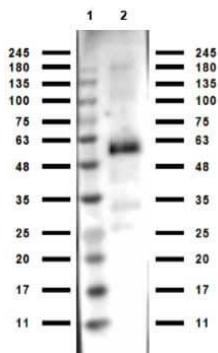
## Formulation

<b>Physical State:</b>	Liquid (sterile filtered)
<b>Concentration:</b>	1.0 mg/ml by UV absorbance at 280 nm
<b>Buffer:</b>	0.02 M Potassium Phosphate, 0.15 M Sodium Chloride, pH 7.2
<b>Preservative:</b>	0.01% (w/v) Sodium Azide

## Shipping & Handling

<b>Shipping Condition:</b>	Wet Ice
<b>Storage Condition:</b>	Store vial at 4° C prior to opening. This product is stable for several weeks at 4° C as an undiluted liquid. Dilute only prior to immediate use. For extended storage aliquot contents and freeze at -20° C or below. Avoid cycles of freezing and thawing.
<b>Expiration:</b>	Expiration date is one (1) year from date of receipt.

## Images



#### Western Blot

Western Blot of Rabbit anti-Monkey IgG antibody. Lane 1: Opal PreStained Molecular Ladder (p/n MB-210-0500). Lane 2: Monkey IgG (p/n 017-0102). Load: 50 ng per lane. Primary antibody: Monkey IgG antibody at 1:1000 for overnight at 4°C. Secondary antibody: Gt-a-Rb HRP (p/n 611-103-122) secondary antibody at 1:70,000 for 30 min at RT. Block: MB-070 for 30 min at RT. Predicted/Observed size: 55 kda for Anti-Monkey IgG.

## Disclaimer

This product is for research use only and is not intended for therapeutic or diagnostic applications. Please contact a technical service representative for more information. All products of animal origin manufactured by Rockland Immunochemicals are derived from starting materials of North American origin. Collection was performed in United States Department of Agriculture (USDA) inspected facilities and all materials have been inspected and certified to be free of disease and suitable for exportation. All properties listed are typical characteristics and are not specifications. All suggestions and data are offered in good faith but without guarantee as conditions and methods of use of our products are beyond our control. All claims must be made within 30 days following the date of delivery. The prospective user must determine the suitability of our materials before adopting them on a commercial scale. Suggested uses of our products are not recommendations to use our products in violation of any patent or as a license under any patent of Rockland Immunochemicals, Inc. If you require a commercial license to use this material and do not have one, then return this material, unopened to: Rockland Inc., P.O. BOX 5199, Limerick, Pennsylvania, USA.