



SZABO SCANDIC

Part of Europa Biosite

Produktinformation



Forschungsprodukte & Biochemikalien



Zellkultur & Verbrauchsmaterial



Diagnostik & molekulare Diagnostik



Laborgeräte & Service

Weitere Information auf den folgenden Seiten!
See the following pages for more information!



Lieferung & Zahlungsart

siehe unsere [Liefer- und Versandbedingungen](#)

Zuschläge

- Mindermengenzuschlag
- Trockeneiszuschlag
- Gefahrgutzuschlag
- Expressversand

SZABO-SCANDIC HandelsgmbH

Quellenstraße 110, A-1100 Wien

T. +43(0)1 489 3961-0

F. +43(0)1 489 3961-7

mail@szabo-scandic.com

www.szabo-scandic.com

[linkedin.com/company/szaboscandic](https://www.linkedin.com/company/szaboscandic) 

Datasheet for 617-444-002**Monkey IgG (H&L) Antibody DyLight™ 680****Overview**

| | |
|----------------------|-----------------------------------------------------------------------------|
| Description: | Rabbit Anti-Monkey IgG (H&L) Antibody DyLight™ 680 Conjugated - 617-444-002 |
| Item No.: | 617-444-002 |
| Size: | 100 µg |
| Applications: | Dot Blot |
| Reactivity: | Monkey |
| Host Species: | Rabbit |

Product Details

Background: Conjugated Anti-Monkey IgG (H&L) DyLight™ 680 Conjugated antibody generated in rabbit detects specifically monkey IgG heavy and light chains. Secreted as part of the adaptive immune response by plasma B cells, immunoglobulin G constitutes 75% of serum immunoglobulins. IgG binds to viruses, bacteria, as well as fungi and facilitates their destruction or neutralization via agglutination (and thereby immobilizing them), activation of the complement cascade, and opsonization for phagocytosis. The whole IgG molecule possesses both the F(c) region, recognized by high-affinity Fc receptor proteins, as well as the F(ab) region possessing the epitope-recognition site. Both heavy and light chains of the antibody molecule are present. This DyLight™680 conjugated anti-Monkey IgG (H&L) secondary antibody is ideal for investigators who routinely perform immunofluorescence, flow cytometry, and more general immunoassays. When choosing a secondary antibody product, consideration must be given to species and immunoglobulin specificity, conjugate type, fragment and chain specificity, level of cross-reactivity, and host-species source and fragment. The emission spectra for this DyLight™ conjugate match the principle output wavelengths of most common fluorescence instrumentation.

| | |
|----------------------|-------------------------------------------------------------------------------------------------------------------|
| Synonyms: | rabbit anti-Monkey IgG DyLight™ 680 conjugated antibody, rabbit anti-Monkey IgG antibody DyLight™ 680 conjugation |
| Host Species: | Rabbit |
| Specificity: | IgG (H&L) |
| Conjugate: | DyLight™ 680 |
| Clonality: | Polyclonal |
| Format: | IgG |

F/P Ratio: 2.8

Target Details

| | |
|---------------------|--------------------------------------------------------------------------------------------------------------------------------------------------------------------------------------------------------------------------------------------------------------|
| Reactivity: | Monkey |
| Immunogen Type: | Native Protein |
| Immunogen: | Anti-Monkey IgG (H&L) was produced by repeated immunization with monkey IgG in rabbit. |
| Purity/Specificity: | This product was prepared from monospecific antiserum by immunoaffinity chromatography using Monkey IgG coupled to agarose beads. Assay by immunoelectrophoresis resulted in a single precipitin arc against anti-Rabbit Serum, Monkey IgG and Monkey Serum. |

Application Details

| | |
|----------------------|-------------------------------------------------------------------------------------------------------------------------------------------------------------------------------------------------------------------------------------------------------------------------------------------------------------------------------------------------------------------------------------------------------------------------------------------------|
| Tested Applications: | Dot Blot |
| Application Note: | Anti-Monkey IgG (H&L) DyLight™ 680 conjugated Antibody has been tested by dot blot and is suitable for use in immunofluorescence microscopy, fluorescence based plate assays (FLISA) and fluorescent western blotting. This product is also suitable for multiplex analysis, including multicolor imaging, utilizing various commercial platforms. Specific conditions for reactivity and signal detection should be optimized by the end user. |
| Assay Dilutions: | All assays should be optimized by the user. Recommended dilutions (if any) may be listed below. |
| FLISA: | >1:20,000 |
| IF: | >1:5,000 |
| WB: | >1:10,000 |

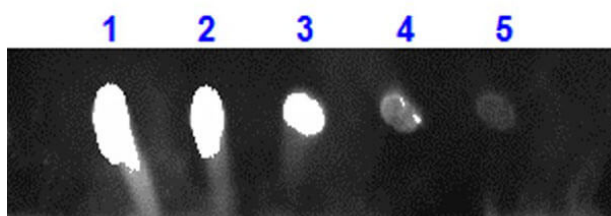
Formulation

| | |
|------------------------|------------------------------------------------------------------------|
| Physical State: | Lyophilized |
| Concentration: | 1.0 mg/mL by UV absorbance at 280 nm |
| Buffer: | 0.02 M Potassium Phosphate, 0.15 M Sodium Chloride, pH 7.2 |
| Preservative: | 0.01% (w/v) Sodium Azide |
| Stabilizer: | 10 mg/mL Bovine Serum Albumin (BSA) - Immunoglobulin and Protease free |
| Reconstitution Volume: | 100 µL |
| Reconstitution Buffer: | Restore with deionized water (or equivalent) |

Shipping & Handling

| | |
|----------------------------|---------------------------------------------------------------------------------------------------------------------------------------------------------------------------------------------------------------------------------------------------------------------------------------------------------------------------------------------------------------|
| Shipping Condition: | Ambient |
| Storage Condition: | Store secondary antibody at 4° C prior to restoration. For extended storage aliquot antibody and freeze at -20° C or below. Avoid cycles of freezing and thawing. Centrifuge product if not completely clear after standing at room temperature. This product is stable for several weeks at 4° C as an undiluted liquid. Dilute only prior to immediate use. |
| Expiration: | Expiration date is one (1) year from date of receipt. |

Images



Dot Blot

Dot Blot for Rabbit Anti-MONKEY IgG DyLight™ 680 Conjugation. Lane 1: 100 ng Monkey IgG. Lanes 2-5: serial dilution 3 fold of Antigen. Primary Antibody: None. Secondary Antibody: Rabbit Anti-Monkey IgG DyLight™ 680 Conjugation at 1 µg/ml at RT for 1 hour. Block: MB-070 at RT for 30 minutes.

Disclaimer

This product is for research use only and is not intended for therapeutic or diagnostic applications. Please contact a technical service representative for more information. All products of animal origin manufactured by Rockland Immunochemicals are derived from starting materials of North American origin. Collection was performed in United States Department of Agriculture (USDA) inspected facilities and all materials have been inspected and certified to be free of disease and suitable for exportation. All properties listed are typical characteristics and are not specifications. All suggestions and data are offered in good faith but without guarantee as conditions and methods of use of our products are beyond our control. All claims must be made within 30 days following the date of delivery. The prospective user must determine the suitability of our materials before adopting them on a commercial scale. Suggested uses of our products are not recommendations to use our products in violation of any patent or as a license under any patent of Rockland Immunochemicals, Inc. If you require a commercial license to use this material and do not have one, then return this material, unopened to: Rockland Inc., P.O. BOX 5199, Limerick, Pennsylvania, USA.