



SZABO SCANDIC

Part of Europa Biosite

Produktinformation



Forschungsprodukte & Biochemikalien



Zellkultur & Verbrauchsmaterial



Diagnostik & molekulare Diagnostik



Laborgeräte & Service

Weitere Information auf den folgenden Seiten!
See the following pages for more information!



Lieferung & Zahlungsart

siehe unsere [Liefer- und Versandbedingungen](#)

Zuschläge

- Mindermengenzuschlag
- Trockeneiszuschlag
- Gefahrgutzuschlag
- Expressversand

SZABO-SCANDIC HandelsgmbH

Quellenstraße 110, A-1100 Wien

T. +43(0)1 489 3961-0

F. +43(0)1 489 3961-7

mail@szabo-scandic.com

www.szabo-scandic.com

[linkedin.com/company/szaboscandic](https://www.linkedin.com/company/szaboscandic)



Datasheet for 701-402-002

F(ab')₂ Bovine IgG (H&L) Antibody Fluorescein Conjugated**Overview**

| | |
|----------------------|--|
| Description: | Rabbit F(ab') ₂ Anti-Bovine IgG (H&L) Antibody Fluorescein Conjugated - 701-402-002 |
| Item No.: | 701-402-002 |
| Size: | 500 µL |
| Applications: | Dot Blot |
| Reactivity: | Bovine |
| Host Species: | Rabbit |

Product Details

| | |
|----------------------|--|
| Background: | F(ab') ₂ Antibody was generated by enzymatic cleavage and subsequent separation from the Fc fragment. Because of their smaller size, F(ab) ₂ fragments offer several advantages over intact antibodies for use in certain immunochemical techniques and experimental applications. F(ab) ₂ fragments penetrate into tissue samples and show better antigen recognition and signal generation in IHC. F(ab) ₂ fragments lack the Fc region and therefore do not bind Fc receptors which effectively lowers background staining. F(ab') ₂ Antibody is ideal for investigators who routinely perform flow cytometry, immunohistochemistry or IHC and other immunoassays. |
| Synonyms: | Rabbit F(ab') ₂ Anti-Bovine fluorescein Conjugated Antibody, Rabbit Fab ₂ Anti-Bovine fluorescein Conjugated Antibody, Rabbit Fab' ₂ Anti-Bovine Antibody FITC Conjugation |
| Host Species: | Rabbit |
| Specificity: | IgG (H&L) |
| Conjugate: | Fluorescein (FITC) |
| Clonality: | Polyclonal |
| Format: | IgG F(ab') ₂ |
| F/P Ratio: | 3.64 |

Target Details

| | |
|--------------------|---------------------------|
| Reactivity: | Bovine |
| Immunogen: | Bovine IgG whole molecule |

| | |
|----------------------------|---|
| Purity/Specificity: | This product was prepared from monospecific antiserum by immunoaffinity chromatography using Bovine IgG coupled to agarose beads followed by solid phase adsorption(s) to remove any unwanted reactivities, pepsin digestion and chromatographic separation. Assay by immunoelectrophoresis resulted in a single precipitin arc against anti-Fluorescein, anti-Rabbit Serum, Bovine IgG and Bovine Serum. No reaction was observed against anti-Pepsin or anti-Rabbit IgG F(c). Limited reactivity will occur against Armenian Hamster IgG. |
|----------------------------|---|

Application Details

| | |
|-----------------------------|--|
| Tested Applications: | Dot Blot |
| Application Note: | F(ab') ₂ Anti-Bovine IgG Fluorescein conjugated antibody has been tested by dot blot and is designed for immunofluorescence microscopy, fluorescence based plate assays (FLISA) and fluorescent western blotting. This product is also suitable for multiplex analysis, including multicolor imaging, utilizing various commercial platforms. |
| Assay Dilutions: | All assays should be optimized by the user. Recommended dilutions (if any) may be listed below. |
| FC: | 1:500 - 1:2,500 |
| FLISA: | 1:10,000 - 1:50,000 |
| IF: | 1:1,000 - 1:5,000 |

Formulation

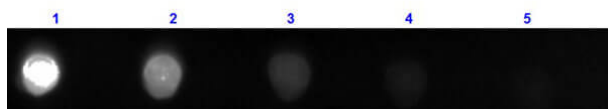
| | |
|-------------------------------|--|
| Physical State: | Lyophilized |
| Concentration: | 1.0 mg/mL by UV absorbance at 280 nm |
| Buffer: | 0.02 M Potassium Phosphate, 0.15 M Sodium Chloride, pH 7.2 |
| Preservative: | 0.01% (w/v) Sodium Azide |
| Stabilizer: | 10 mg/mL Bovine Serum Albumin (BSA) - Immunoglobulin and Protease free |
| Reconstitution Volume: | 500 µL |
| Reconstitution Buffer: | Restore with deionized water (or equivalent) |

Shipping & Handling

| | |
|----------------------------|---------|
| Shipping Condition: | Ambient |
|----------------------------|---------|

| | |
|---------------------------|---|
| Storage Condition: | Store vial at 4° C prior to restoration. For extended storage aliquot contents and freeze at -20° C or below. Avoid cycles of freezing and thawing. Centrifuge product if not completely clear after standing at room temperature. This product is stable for several weeks at 4° C as an undiluted liquid. Dilute only prior to immediate use. |
| Expiration: | Expiration date is one (1) year from date of receipt. |

Images



Dot Blot

Dot Blot results of Rabbit F(ab')₂ Anti-Bovine IgG Antibody Fluorescein Conjugated. Dots are Bovine IgG at (1) 100ng, (2) 33.3ng, (3) 11.1ng, (4) 3.70ng, (5) 1.23ng. Blocking: MB-070 for 30 min at RT. Primary Antibody: Rabbit F(ab')₂ Anti-Bovine IgG Antibody FITC at 1μg/mL for 1hr at RT. Secondary Antibody: none. Imaged with BioRad ChemiDoc, FITC filter.

Disclaimer

This product is for research use only and is not intended for therapeutic or diagnostic applications. Please contact a technical service representative for more information. All products of animal origin manufactured by Rockland Immunochemicals are derived from starting materials of North American origin. Collection was performed in United States Department of Agriculture (USDA) inspected facilities and all materials have been inspected and certified to be free of disease and suitable for exportation. All properties listed are typical characteristics and are not specifications. All suggestions and data are offered in good faith but without guarantee as conditions and methods of use of our products are beyond our control. All claims must be made within 30 days following the date of delivery. The prospective user must determine the suitability of our materials before adopting them on a commercial scale. Suggested uses of our products are not recommendations to use our products in violation of any patent or as a license under any patent of Rockland Immunochemicals, Inc. If you require a commercial license to use this material and do not have one, then return this material, unopened to: Rockland Inc., P.O. BOX 5199, Limerick, Pennsylvania, USA.