



# SZABO SCANDIC

Part of Europa Biosite

## Produktinformation



Forschungsprodukte & Biochemikalien



Zellkultur & Verbrauchsmaterial



Diagnostik & molekulare Diagnostik



Laborgeräte & Service

Weitere Information auf den folgenden Seiten!  
See the following pages for more information!



### Lieferung & Zahlungsart

siehe unsere [Liefer- und Versandbedingungen](#)

### Zuschläge

- Mindermengenzuschlag
- Trockeneiszuschlag
- Gefahrgutzuschlag
- Expressversand

### SZABO-SCANDIC HandelsgmbH

Quellenstraße 110, A-1100 Wien

T. +43(0)1 489 3961-0

F. +43(0)1 489 3961-7

[mail@szabo-scandic.com](mailto:mail@szabo-scandic.com)

[www.szabo-scandic.com](http://www.szabo-scandic.com)

[linkedin.com/company/szaboscandic](https://www.linkedin.com/company/szaboscandic)



**Datasheet for 705-4213****F(ab')<sub>2</sub> Goat IgG (H&L) Antibody Fluorescein Conjugated Pre-Adsorbed****Overview**

<b>Description:</b>	Rabbit F(ab') <sub>2</sub> Anti-Goat IgG (H&L) Antibody Fluorescein Conjugated (Min X Human Serum Proteins) - 705-4213
<b>Item No.:</b>	705-4213
<b>Size:</b>	500 µg
<b>Applications:</b>	WB
<b>Reactivity:</b>	Goat
<b>Host Species:</b>	Rabbit

**Product Details**

<b>Background:</b>	F(ab') <sub>2</sub> Anti-Goat IgG Fluorescein Antibody was generated by enzymatic cleavage and subsequent separation from the Fc fragment. Because of their smaller size, F(ab') <sub>2</sub> fragments offer several advantages over intact antibodies for use in certain immunochemical techniques and experimental applications. F(ab') <sub>2</sub> fragments penetrate tissue samples and show better antigen recognition and signal generation in IHC. F(ab') <sub>2</sub> fragments lack the Fc region and therefore do not bind Fc receptors which effectively lowers background staining. F(ab') <sub>2</sub> Antibody is ideal for investigators who routinely perform flow cytometry, immunohistochemistry or IHC and other immunoassays.
<b>Synonyms:</b>	Rabbit F(ab') <sub>2</sub> Anti-Goat IgG Antibody Fluorescein Conjugation, Rabbit Fab2 Anti-Goat IgG FITC Conjugated Antibody
<b>Host Species:</b>	Rabbit
<b>Specificity:</b>	IgG (H&L)
<b>Conjugate:</b>	Fluorescein (FITC)
<b>Clonality:</b>	Polyclonal
<b>Format:</b>	IgG F(ab') <sub>2</sub>
<b>F/P Ratio:</b>	2.4

**Target Details**

<b>Reactivity:</b>	Goat
<b>Immunogen:</b>	Goat IgG whole molecule
<b>Purity/Specificity:</b>	This product was prepared from monospecific antiserum by immunoaffinity chromatography using Goat IgG coupled to agarose beads followed by solid phase adsorption(s) to remove any unwanted reactivities, pepsin digestion and chromatographic separation. Assay by immunoelectrophoresis resulted in a single precipitin arc against anti-Fluorescein, anti-Rabbit Serum, Goat IgG and Goat Serum. No reaction was observed against anti-Pepsin, anti-Rabbit IgG F(c) or Human Serum Proteins.

## Application Details

<b>Tested Applications:</b>	WB
<b>Application Note:</b>	F(ab') <sub>2</sub> Anti-Goat IgG Fluorescein Antibody has been tested by western blot and is suitable for immunomicroscopy and flow cytometry or FACS analysis as well as other antibody based fluorescent assays requiring extremely low background levels, absence of F(c) mediated binding, lot-to-lot consistency, high titer and specificity.
<b>Assay Dilutions:</b>	All assays should be optimized by the user. Recommended dilutions (if any) may be listed below.
<b>FC:</b>	1:500-1:2,500
<b>FLISA:</b>	1:10,000 - 1:50,000
<b>IF:</b>	1:1,000 - 1:5,000

## Formulation

<b>Physical State:</b>	Lyophilized
<b>Concentration:</b>	1.0 mg/mL by UV absorbance at 280 nm
<b>Buffer:</b>	0.02 M Potassium Phosphate, 0.15 M Sodium Chloride, pH 7.2
<b>Preservative:</b>	0.01% (w/v) Sodium Azide
<b>Stabilizer:</b>	10 mg/mL Bovine Serum Albumin (BSA) - Immunoglobulin and Protease free
<b>Reconstitution Volume:</b>	500 µL
<b>Reconstitution Buffer:</b>	Restore with deionized water (or equivalent)

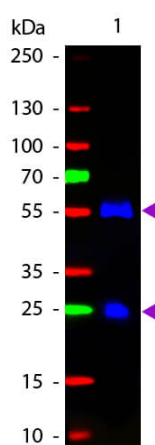
## Shipping & Handling

<b>Shipping Condition:</b>	Ambient
----------------------------	---------

**Storage Condition:** Store vial at 4° C prior to restoration. For extended storage aliquot contents and freeze at -20° C or below. Avoid cycles of freezing and thawing. Centrifuge product if not completely clear after standing at room temperature. This product is stable for several weeks at 4° C as an undiluted liquid. Dilute only prior to immediate use.

**Expiration:** Expiration date is one (1) year from date of receipt.

## Images



### Western Blot

Western blot of Fluorescein conjugated Rabbit F(ab')<sub>2</sub> Anti-Goat IgG Pre-Adsorbed secondary antibody. Lane 1: Goat IgG. Lane 2: None. Load: 50 ng per lane. Primary antibody: None. Secondary antibody: Fluorescein rabbit secondary antibody at 1:1,000 for 60 min at RT. Blocking: MB-070 for 30 min at RT. Predicted/Observed size: 25 & 55 kDa, 25 & 55 kDa for Goat IgG. Other band(s): None.

## Disclaimer

This product is for research use only and is not intended for therapeutic or diagnostic applications. Please contact a technical service representative for more information. All products of animal origin manufactured by Rockland Immunochemicals are derived from starting materials of North American origin. Collection was performed in United States Department of Agriculture (USDA) inspected facilities and all materials have been inspected and certified to be free of disease and suitable for exportation. All properties listed are typical characteristics and are not specifications. All suggestions and data are offered in good faith but without guarantee as conditions and methods of use of our products are beyond our control. All claims must be made within 30 days following the date of delivery. The prospective user must determine the suitability of our materials before adopting them on a commercial scale. Suggested uses of our products are not recommendations to use our products in violation of any patent or as a license under any patent of Rockland Immunochemicals, Inc. If you require a commercial license to use this material and do not have one, then return this material, unopened to: Rockland Inc., P.O. BOX 5199, Limerick, Pennsylvania, USA.