



SZABO SCANDIC

Part of Europa Biosite

Produktinformation



Forschungsprodukte & Biochemikalien



Zellkultur & Verbrauchsmaterial



Diagnostik & molekulare Diagnostik



Laborgeräte & Service

Weitere Information auf den folgenden Seiten!
See the following pages for more information!



Lieferung & Zahlungsart

siehe unsere [Liefer- und Versandbedingungen](#)

Zuschläge

- Mindermengenzuschlag
- Trockeneiszuschlag
- Gefahrgutzuschlag
- Expressversand

SZABO-SCANDIC HandelsgmbH

Quellenstraße 110, A-1100 Wien

T. +43(0)1 489 3961-0

F. +43(0)1 489 3961-7

mail@szabo-scandic.com

www.szabo-scandic.com

[linkedin.com/company/szaboscandic](https://www.linkedin.com/company/szaboscandic) 

Datasheet for 705-708-125**F(ab')₂ Goat IgG (H&L) Antibody Phycoerythrin Conjugated Pre-Adsorbed****Overview**

Description:	Donkey F(ab') ₂ Anti-Goat IgG (H&L) Antibody Phycoerythrin Conjugated (Min X Ch GP Ham Hs Hu Ms Rb & Rt Serum Proteins) - 705-708-125
Item No.:	705-708-125
Size:	500 µg
Applications:	Dot Blot, WB, FC
Reactivity:	Goat
Host Species:	Donkey

Product Details

Background:	F(ab') ₂ Anti-Goat IgG Phycoerythrin Antibody was generated by enzymatic cleavage and subsequent separation from the Fc fragment. Because of their smaller size, F(ab') ₂ fragments offer several advantages over intact antibodies for use in certain immunochemical techniques and experimental applications. F(ab') ₂ fragments penetrate tissue samples and show better antigen recognition and signal generation in IHC. F(ab') ₂ fragments lack the Fc region and therefore do not bind Fc receptors which effectively lowers background staining. F(ab') ₂ Antibody is ideal for investigators who routinely perform flow cytometry, immunohistochemistry or IHC and other immunoassays.
Synonyms:	Donkey F(ab') ₂ Anti-Goat IgG Antibody Phycoerythrin Conjugation, Donkey Fab2 Anti-Goat IgG PE Conjugated Antibody
Host Species:	Donkey
Specificity:	IgG (H&L)
Conjugate:	R-Phycoerythrin (RPE)
Clonality:	Polyclonal
Format:	IgG F(ab') ₂
F/P Ratio:	4.74

Target Details

Reactivity:	Goat
Immunogen Type:	Native Protein
Immunogen:	Anti-Goat IgG was produced by repeated immunization with goat IgG whole molecule in donkey.
Purity/Specificity:	This product was prepared from monospecific antiserum by immunoaffinity chromatography using Goat IgG coupled to agarose beads followed by solid phase adsorption(s) to remove any unwanted reactivities, pepsin digestion and chromatographic separation. Assay by immunoelectrophoresis resulted in a single precipitin arc against anti-Phycoerythrin, anti-Donkey Serum, Goat IgG and Goat Serum. No reaction was observed against anti-Pepsin, anti-Donkey IgG F(c), Chicken, Guinea Pig, Hamster, Horse, Human, Mouse, Rabbit, or Rat Serum Proteins.

Application Details

Tested Applications:	Dot Blot, WB
Suggested Applications:	FC (Based on references)
Application Note:	F(ab') ₂ Anti-Goat IgG Phycoerythrin Antibody has been tested by dot blot and western blot and is suitable for immunomicroscopy and flow cytometry or FACS analysis as well as other antibody based fluorescent assays requiring extremely low background levels, absence of F(c) mediated binding, lot-to-lot consistency, high titer and specificity. The maximum amount of reagent required to stain 1 x 10 ⁶ cells in flow cytometry is approximately 1.0 µg of antibody conjugate. Lesser amounts of reagent may be sufficient for staining. Optimal titers for other applications should be determined by the researcher. As a general guideline dilutions of 1:100 to 1:250 should be suitable for most applications.
Assay Dilutions:	All assays should be optimized by the user. Recommended dilutions (if any) may be listed below.
FC:	1:100 - 1:250
FLISA:	User Optimized
IF:	1:100 - 1:250
WB:	User Optimized

Formulation

Physical State:	Lyophilized
Concentration:	1.032 mg/ml by UV absorbance at 280 nm
Buffer:	0.02 M Potassium Phosphate, 0.15 M Sodium Chloride, pH 7.2
Preservative:	0.01% (w/v) Sodium Azide

Stabilizer:	10 mg/mL Bovine Serum Albumin (BSA) - Immunoglobulin and Protease free
Reconstitution Volume:	1.0 mL
Reconstitution Buffer:	Restore with deionized water (or equivalent)

Shipping & Handling

Shipping Condition:	Ambient
Storage Condition:	Store vial at 4° C prior to restoration. Restore with deionized water (or equivalent). This product is stable at 4° C as an undiluted liquid. Dilute only prior to immediate use. Centrifuge product if not completely clear after standing at room temperature. Do not freeze after reconstitution. Store reagent in the dark. Use subdued lighting during handling and incubation of cells prior to analysis.
Expiration:	Expiration date is one (1) year from date of receipt.

Images

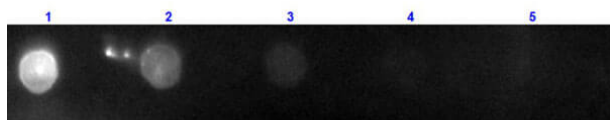


Dot Blot

Dot Blot of F(ab')₂ Donkey anti-Goat IgG Phycoerythrin Conjugated Min X Ch, GP, Ham, Hs, Hu, Ms, Rb, & Rt serum proteins antibody. Antigen: Goat IgG. Load: 100 ng, 33.3 ng, 11.1 ng, 3.7 ng, or 1.23 ng as indicated. Primary antibody: N/A. Secondary antibody: F(ab')₂ Donkey anti-Goat IgG Phycoerythrin Conjugated Min X Ch, GP, Ham, Hs, Hu, Ms, Rb, & Rt serum proteins antibody at 1:1,000 for 60 min at RT. Block: Blocking Buffer for Fluorescent Western Blotting (MB-070) for 60 min at RT.

Dot Blot

Dot Blot results of Donkey F(ab')₂ Anti-Goat IgG Antibody Phycoerythrin Conjugated. Dots are Goat IgG at (1) 100ng, (2) 33.3ng, (3) 11.1ng, (4) 3.70ng, (5) 1.23ng. Blocking: MB-070 for 30 min at RT. Primary Antibody: none. Secondary Antibody: Donkey F(ab')₂ Anti-Goat IgG Antibody RPE at 1µg/mL for 1hr at RT. Imaged with BioRad ChemiDoc, Rhodamine filter.

**References**

- Gornikiewicz A et al. Retroviral targeting of proliferating endothelial cells. *Acta Biochim Pol.* (2005)

Disclaimer

This product is for research use only and is not intended for therapeutic or diagnostic applications. Please contact a technical service representative for more information. All products of animal origin manufactured by Rockland Immunochemicals are derived from starting materials of North American origin. Collection was performed in United States Department of Agriculture (USDA) inspected facilities and all materials have been inspected and certified to be free of disease and suitable for exportation. All properties listed are typical characteristics and are not specifications. All suggestions and data are offered in good faith but without guarantee as conditions and methods of use of our products are beyond our control. All claims must be made within 30 days following the date of delivery. The prospective user must determine the suitability of our materials before adopting them on a commercial scale. Suggested uses of our products are not recommendations to use our products in violation of any patent or as a license under any patent of Rockland Immunochemicals, Inc. If you require a commercial license to use this material and do not have one, then return this material, unopened to: Rockland Inc., P.O. BOX 5199, Limerick, Pennsylvania, USA.