



SZABO SCANDIC

Part of Europa Biosite

Produktinformation



Forschungsprodukte & Biochemikalien



Zellkultur & Verbrauchsmaterial



Diagnostik & molekulare Diagnostik



Laborgeräte & Service

Weitere Information auf den folgenden Seiten!
See the following pages for more information!



Lieferung & Zahlungsart

siehe unsere [Liefer- und Versandbedingungen](#)

Zuschläge

- Mindermengenzuschlag
- Trockeneiszuschlag
- Gefahrgutzuschlag
- Expressversand

SZABO-SCANDIC HandelsgmbH

Quellenstraße 110, A-1100 Wien

T. +43(0)1 489 3961-0

F. +43(0)1 489 3961-7

mail@szabo-scandic.com

www.szabo-scandic.com

[linkedin.com/company/szaboscandic](https://www.linkedin.com/company/szaboscandic) 

Datasheet for 706-408-002

F(ab')₂ Guinea Pig IgG (H&L) Antibody Phycoerythrin conjugated**Overview**

Description:	Rabbit F(ab') ₂ Anti-Guinea Pig IgG (H&L) Antibody Phycoerythrin Conjugated - 706-408-002
Item No.:	706-408-002
Size:	500 µg
Applications:	Dot Blot
Reactivity:	Guinea Pig
Host Species:	Rabbit

Product Details

Background:	F(ab') ₂ Anti-Guinea Pig IgG Phycoerythrin Antibody was generated by enzymatic cleavage and subsequent separation from the Fc fragment. Because of their smaller size, F(ab') ₂ fragments offer several advantages over intact antibodies for use in certain immunochemical techniques and experimental applications. F(ab') ₂ fragments penetrate tissue samples and show better antigen recognition and signal generation in IHC. F(ab') ₂ fragments lack the Fc region and therefore do not bind Fc receptors which effectively lowers background staining. F(ab') ₂ Antibody is ideal for investigators who routinely perform flow cytometry, immunohistochemistry or IHC and other immunoassays.
Synonyms:	Rabbit F(ab') ₂ Anti-Guinea Pig IgG Antibody Phycoerythrin Conjugation, Rabbit F(ab') ₂ Anti-Guinea Pig IgG PE Conjugated Antibody, Rabbit Fab2 Anti-Guinea Pig IgG Phycoerythrin Conjugated Antibody
Host Species:	Rabbit
Specificity:	IgG (H&L)
Conjugate:	R-Phycoerythrin (RPE)
Clonality:	Polyclonal
Format:	IgG F(ab') ₂

Target Details

Reactivity:	Guinea Pig
Immunogen:	Guinea Pig IgG whole molecule

Purity/Specificity:	This product was prepared from monospecific antiserum by immunoaffinity chromatography using Guinea Pig IgG coupled to agarose beads followed by solid phase adsorption(s) to remove any unwanted reactivities, pepsin digestion and chromatographic separation. Assay by immunoelectrophoresis resulted in a single precipitin arc against anti-phycoerythrin, anti-Rabbit Serum, Guinea Pig IgG and Guinea Pig Serum. No reaction was observed against anti-Pepsin or anti-Rabbit IgG F(c).
----------------------------	---

Application Details

Tested Applications:	Dot Blot
Application Note:	F(ab') ₂ Anti-Guinea Pig IgG Phycoerythrin Antibody has been tested by dot blot and is designed for immunofluorescence microscopy, fluorescence based plate assays (FLISA) and fluorescent western blotting. This product is also suitable for multiplex analysis, including multicolor imaging, utilizing various commercial platforms.
Assay Dilutions:	All assays should be optimized by the user. Recommended dilutions (if any) may be listed below.
FC:	User Optimized
IF:	1:100-1:250

Formulation

Physical State:	Lyophilized
Concentration:	0.5 mg/mL by absorbance = 82.0 at 565 nm
Buffer:	0.02 M Potassium Phosphate, 0.15 M Sodium Chloride, pH 7.2
Preservative:	0.01% (w/v) Sodium Azide
Stabilizer:	10 mg/mL Bovine Serum Albumin (BSA) - Immunoglobulin and Protease free
Reconstitution Volume:	1.0 mL
Reconstitution Buffer:	Restore with deionized water (or equivalent)

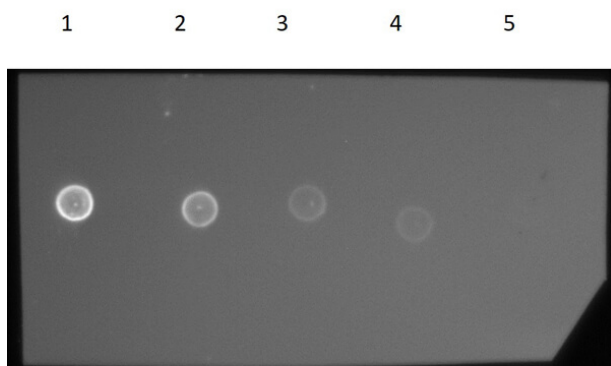
Shipping & Handling

Shipping Condition:	Ambient
----------------------------	---------

Storage Condition: Store vial at 4° C prior to restoration. Restore with deionized water (or equivalent). This product is stable at 4° C as an undiluted liquid. Dilute only prior to immediate use. Centrifuge product if not completely clear after standing at room temperature. Do not freeze after reconstitution. Store reagent in the dark. Use subdued lighting during handling and incubation of cells prior to analysis.

Expiration: Expiration date is one (1) year from date of receipt.

Images



Dot Blot

Dot Blot Results of F(ab')₂ Rabbit Anti-Guinea Pig IgG Antibody Phycoerythrin Conjugated. Guinea Pig IgG Whole Molecule (1) 100ng, (2) 33.33ng, (3) 11.11ng, (4) 3.70ng, (5) 1.23ng. Antibody: F(ab')₂ Rabbit Anti-Guinea Pig IgG Phycoerythrin Conjugate at 1.0µg/mL at RT for 1hr. Block: Fluorescent Buffer (p/n MB-073) at RT for 30 mins.

Disclaimer

This product is for research use only and is not intended for therapeutic or diagnostic applications. Please contact a technical service representative for more information. All products of animal origin manufactured by Rockland Immunochemicals are derived from starting materials of North American origin. Collection was performed in United States Department of Agriculture (USDA) inspected facilities and all materials have been inspected and certified to be free of disease and suitable for exportation. All properties listed are typical characteristics and are not specifications. All suggestions and data are offered in good faith but without guarantee as conditions and methods of use of our products are beyond our control. All claims must be made within 30 days following the date of delivery. The prospective user must determine the suitability of our materials before adopting them on a commercial scale. Suggested uses of our products are not recommendations to use our products in violation of any patent or as a license under any patent of Rockland Immunochemicals, Inc. If you require a commercial license to use this material and do not have one, then return this material, unopened to: Rockland Inc., P.O. BOX 5199, Limerick, Pennsylvania, USA.