



SZABO SCANDIC

Part of Europa Biosite

Produktinformation



Forschungsprodukte & Biochemikalien



Zellkultur & Verbrauchsmaterial



Diagnostik & molekulare Diagnostik



Laborgeräte & Service

Weitere Information auf den folgenden Seiten!
See the following pages for more information!



Lieferung & Zahlungsart

siehe unsere [Liefer- und Versandbedingungen](#)

Zuschläge

- Mindermengenzuschlag
- Trockeneiszuschlag
- Gefahrgutzuschlag
- Expressversand

SZABO-SCANDIC HandelsgmbH

Quellenstraße 110, A-1100 Wien

T. +43(0)1 489 3961-0

F. +43(0)1 489 3961-7

mail@szabo-scandic.com

www.szabo-scandic.com

[linkedin.com/company/szaboscandic](https://www.linkedin.com/company/szaboscandic) 

Datasheet for 709-1217**F(ab')₂ Human IgG Fc Antibody Fluorescein Conjugated Pre-Adsorbed****Overview**

Description:	Goat F(ab') ₂ Anti-Human IgG Fc Antibody Fluorescein Conjugated (Min X Bv Hs Ms & Rt Serum Proteins) - 709-1217
Item No.:	709-1217
Size:	1 mg
Applications:	Dot Blot, WB
Reactivity:	Human
Host Species:	Goat

Product Details

Background:	F(ab') ₂ Anti-Human IgG F(c) Fluorescein Antibody generated in goat detects Human F(c). Representing approximately 75% of serum immunoglobulins in humans, IgG is the most abundant antibody isotype found in the circulation. IgG molecules are synthesized and secreted by plasma B cells. Secondary Antibodies are available in a variety of formats and conjugate types. When choosing a secondary antibody product, consideration must be given to species and immunoglobulin specificity, conjugate type, fragment and chain specificity, level of cross-reactivity, and host-species source and fragment composition. F(c) Antibody is ideal for investigators who routinely perform flow cytometry, immunohistochemistry or IHC and other immunoassays.
Synonyms:	Goat F(ab') ₂ Anti-Human IgG F(c) Fluorescein Conjugated Pre-Adsorbed Antibody, Goat Fab2 Anti-Human IgG Fc Fragment Fluorescein Conjugated Antibody, Goat F(ab') ₂ Anti-Human IgG F(c) Fragment Antibody FITC Conjugated
Host Species:	Goat
Specificity:	IgG Fc
Conjugate:	Fluorescein (FITC)
Clonality:	Polyclonal
Format:	IgG F(ab') ₂
F/P Ratio:	3.67
Specific Activity:	2.8

Target Details

Reactivity:	Human
Immunogen:	Human IgG F(c) fragment
Purity/Specificity:	This product was prepared from monospecific antiserum by immunoaffinity chromatography using Human IgG coupled to agarose beads followed by solid phase adsorption(s) to remove any unwanted reactivities, pepsin digestion and chromatographic separation. Assay by immunoelectrophoresis resulted in a single precipitin arc against anti-Fluorescein, anti-Goat Serum, Human IgG, Human IgG F(c) and Human Serum. No reaction was observed against anti-Pepsin, anti-Goat IgG F(c), Human IgG F(ab) or Bovine, Horse, Mouse and Rat Serum Proteins.

Application Details

Tested Applications:	Dot Blot, WB
Application Note:	F(ab') ₂ Anti-Human IgG F(c) Fluorescein Antibody has been tested by dot blot and western blot and is suitable for immunomicroscopy and flow cytometry or FACS analysis as well as other antibody based fluorescent assays requiring extremely low background levels, absence of F(c) mediated binding, lot-to-lot consistency, high titer and specificity. This product is designed for immunofluorescence microscopy, fluorescence based plate assays (FLISA) and fluorescent western blotting. This product is also suitable for multiplex analysis, including multicolor imaging, utilizing various commercial platforms.
Assay Dilutions:	All assays should be optimized by the user. Recommended dilutions (if any) may be listed below.
FC:	1:500 - 1:2,500
FLISA:	1:10,000 - 1:50,000
IF:	1:1,000 - 1:5,000

Formulation

Physical State:	Lyophilized
Concentration:	1.0 mg/mL by UV absorbance at 280 nm
Buffer:	0.02 M Potassium Phosphate, 0.15 M Sodium Chloride, pH 7.2
Preservative:	0.01% (w/v) Sodium Azide
Stabilizer:	10 mg/mL Bovine Serum Albumin (BSA) - Immunoglobulin and Protease free
Reconstitution Volume:	1.0 mL

Reconstitution Buffer: Restore with deionized water (or equivalent)

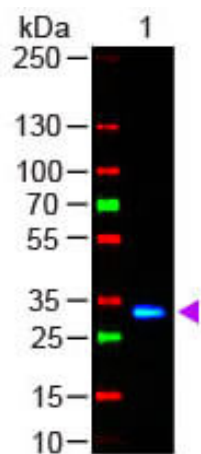
Shipping & Handling

Shipping Condition: Ambient

Storage Condition: Store vial at 4° C prior to restoration. For extended storage aliquot contents and freeze at -20° C or below. Avoid cycles of freezing and thawing. Centrifuge product if not completely clear after standing at room temperature. This product is stable for several weeks at 4° C as an undiluted liquid. Dilute only prior to immediate use.

Expiration: Expiration date is one (1) year from date of receipt.

Images



Western Blot

Western Blot of Goat anti-F(ab')₂ HUMAN IgG F(c) Antibody
Fluorescein Conjugated Pre-Adsorbed Lane 1: Human Fc
Load: 50 ng per lane Secondary antibody: F(ab')₂ HUMAN
IgG F(c) Antibody Fluorescein Conjugated Pre-Adsorbed at
1:1,000 for 60 min at RT Block: MB-070 for 30 min at RT

Disclaimer

This product is for research use only and is not intended for therapeutic or diagnostic applications. Please contact a technical service representative for more information. All products of animal origin manufactured by Rockland Immunochemicals are derived from starting materials of North American origin. Collection was performed in United States Department of Agriculture (USDA) inspected facilities and all materials have been inspected and certified to be free of disease and suitable for exportation. All properties listed are typical characteristics and are not specifications. All suggestions and data are offered in good faith but without guarantee as conditions and methods of use of our products are beyond our control. All claims must be made within 30 days following the date of delivery. The prospective user must determine the suitability of our materials before adopting them on a commercial scale. Suggested uses of our products are not recommendations to use our products in violation of any patent or as a license under any patent of Rockland Immunochemicals, Inc. If you require a commercial license to use this material and do not have one, then return this material, unopened to: Rockland Inc., P.O. BOX 5199, Limerick, Pennsylvania, USA.