



SZABO SCANDIC

Part of Europa Biosite

Produktinformation



Forschungsprodukte & Biochemikalien



Zellkultur & Verbrauchsmaterial



Diagnostik & molekulare Diagnostik



Laborgeräte & Service

Weitere Information auf den folgenden Seiten!
See the following pages for more information!



Lieferung & Zahlungsart

siehe unsere [Liefer- und Versandbedingungen](#)

Zuschläge

- Mindermengenzuschlag
- Trockeneiszuschlag
- Gefahrgutzuschlag
- Expressversand

SZABO-SCANDIC Handels GmbH

Quellenstraße 110, A-1100 Wien

T. +43(0)1 489 3961-0

F. +43(0)1 489 3961-7

mail@szabo-scandic.com

www.szabo-scandic.com

[linkedin.com/company/szaboscandic](https://www.linkedin.com/company/szaboscandic) 

Datasheet for 709-1510

F(ab')₂ Human (kappa chain) Antibody Alkaline Phosphatase Conjugated

Overview

Description:	Goat F(ab') ₂ Anti-Human κ (kappa chain) Antibody Alkaline Phosphatase Conjugated - 709-1510
Item No.:	709-1510
Size:	500 µg
Applications:	ELISA
Reactivity:	Human
Host Species:	Goat

Product Details

Background:	Suitable for immunomicroscopy and flow cytometry or FACS analysis as well as other antibody based fluorescent assays requiring lot-to-lot consistency.
Synonyms:	Goat F(ab') ₂ Anti-Human κ (kappa chain) Antibody Alkaline Phosphatase Conjugation, Goat F(ab') ₂ Anti-Human kappa chain alk phos Conjugated Antibody
Host Species:	Goat
Specificity:	κ (kappa chain)
Conjugate:	Alkaline Phosphatase (AP)
Clonality:	Polyclonal
Format:	IgG F(ab') ₂

Target Details

Reactivity:	Human
Immunogen:	Human kappa light chain

Purity/Specificity:	This product was prepared from monospecific antiserum by immunoaffinity chromatography using Human antigens coupled to agarose beads followed by solid phase adsorption(s) to remove any unwanted reactivities, pepsin digestion and chromatographic separation. Assay by immunoelectrophoresis resulted in a single precipitin arc against anti-Alkaline Phosphatase and anti-Goat Serum. No reaction was observed against anti-Pepsin or anti-Goat IgG F(c). Specificity was confirmed by ELISA at less than 1% cross reactivity against other human heavy or light chain isotypes.
----------------------------	---

Application Details

Suggested Applications:	ELISA (Based on references)
Application Note:	This product has been assayed against 1.0 µg of Human IgG in a standard capture ELISA using pNPP p-nitrophenyl phosphate code # NPP-10 as a substrate for 30 minutes at room temperature. A working dilution of 1:4,000 to 1:20,000 of the reconstitution concentration is suggested for this product.
Assay Dilutions:	All assays should be optimized by the user. Recommended dilutions (if any) may be listed below.
ELISA:	1:2,000 - 1:10,000
IHC:	1:200 - 1:1,000
WB:	1:500 - 1:2,500

Formulation

Physical State:	Liquid (sterile filtered)
Concentration:	1.0 mg/mL by UV absorbance at 280 nm
Buffer:	0.05 M Tris Chloride, 0.15M Sodium Chloride, 0.001M Magnesium Chloride, 0.0001M Zinc Chloride, 50% (v/v) Glycerol; pH 8.0
Preservative:	0.01% (w/v) Sodium Azide
Stabilizer:	10 mg/mL Bovine Serum Albumin (BSA) - Immunoglobulin and Protease free

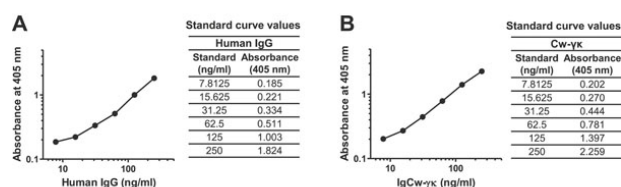
Shipping & Handling

Shipping Condition:	Wet Ice
Storage Condition:	Store vial at 4° C before opening. DO NOT FREEZE. This product is stable at 4° C as an undiluted liquid. Dilute only prior to immediate use. Freezing alkaline phosphatase conjugates will result in a substantial loss of enzymatic activity.

Expiration:

Expiration date is one (1) year from date of receipt.

Images



ELISA

Standard curves generated using the respective human IgG and IgCw-γκ. ELISA data from the right-hand panels were used to plot the log graphs. Human IgG and IgCw-γ with known concentrations were placed in wells coated with goat anti-human IgG/Fc antibody as a capture antibody, and bound Ig molecules were detected with AP-conjugated goat anti-human Cκ antibody F (ab')₂ as a detection antibody. Data are presented as mean ± SD, n = 3. Fig. 4. PMID: 30910358.

References

- Kim M et al. Applications of the immunoglobulin Cw fragment (IgCw) composed of the constant regions of heavy and light (CH and CL) chains. *Biochem Biophys Res Commun.* (2019)

Disclaimer

This product is for research use only and is not intended for therapeutic or diagnostic applications. Please contact a technical service representative for more information. All products of animal origin manufactured by Rockland Immunochemicals are derived from starting materials of North American origin. Collection was performed in United States Department of Agriculture (USDA) inspected facilities and all materials have been inspected and certified to be free of disease and suitable for exportation. All properties listed are typical characteristics and are not specifications. All suggestions and data are offered in good faith but without guarantee as conditions and methods of use of our products are beyond our control. All claims must be made within 30 days following the date of delivery. The prospective user must determine the suitability of our materials before adopting them on a commercial scale. Suggested uses of our products are not recommendations to use our products in violation of any patent or as a license under any patent of Rockland Immunochemicals, Inc. If you require a commercial license to use this material and do not have one, then return this material, unopened to: Rockland Inc., P.O. BOX 5199, Limerick, Pennsylvania, USA.