



# SZABO SCANDIC

Part of Europa Biosite

## Produktinformation



Forschungsprodukte & Biochemikalien



Zellkultur & Verbrauchsmaterial



Diagnostik & molekulare Diagnostik



Laborgeräte & Service

Weitere Information auf den folgenden Seiten!  
See the following pages for more information!



### Lieferung & Zahlungsart

siehe unsere [Liefer- und Versandbedingungen](#)

### Zuschläge

- Mindermengenzuschlag
- Trockeneiszuschlag
- Gefahrgutzuschlag
- Expressversand

### SZABO-SCANDIC HandelsgmbH

Quellenstraße 110, A-1100 Wien

T. +43(0)1 489 3961-0

F. +43(0)1 489 3961-7

[mail@szabo-scandic.com](mailto:mail@szabo-scandic.com)

[www.szabo-scandic.com](http://www.szabo-scandic.com)

[linkedin.com/company/szaboscandic](https://www.linkedin.com/company/szaboscandic) 

**Datasheet for 709-1531****F(ab')<sub>2</sub> Human IgM Fc5<sub>μ</sub> Antibody Alkaline Phosphatase Conjugated****Overview**

<b>Description:</b>	Goat F(ab') <sub>2</sub> Anti-Human IgM Fc5 <sub>μ</sub> Antibody Alkaline Phosphatase Conjugated - 709-1531
<b>Item No.:</b>	709-1531
<b>Size:</b>	500 μg
<b>Applications:</b>	ELISA
<b>Reactivity:</b>	Human
<b>Host Species:</b>	Goat

**Product Details**

<b>Background:</b>	F(ab') <sub>2</sub> Anti-Human IgM Fc5 <sub>μ</sub> Alkaline Phosphatase Antibody generated in goat detects specifically the Fc5 <sub>μ</sub> portion of the human IgM heavy chain. Immunoglobulin M is the largest antibody isotype and the first to be secreted against an initial exposure to antigen. IgM is predominantly produced in the spleen. Formed from covalently linking 5 immunoglobulins together. F(ab') <sub>2</sub> Anti-Human IgM Fc5 <sub>μ</sub> antibody is ideal for investigators in Immunology, Microbiology, and Cell Biology.
<b>Synonyms:</b>	Goat F(ab') <sub>2</sub> Anti-Human IgM Fc5 <sub>μ</sub> Antibody Alkaline Phosphatase Conjugation, Goat Fab2 Anti-Human IgM Fc5 <sub>μ</sub> alk phos Conjugated Antibody
<b>Host Species:</b>	Goat
<b>Specificity:</b>	IgM Fc5 <sub>μ</sub>
<b>Conjugate:</b>	Alkaline Phosphatase (AP)
<b>Clonality:</b>	Polyclonal
<b>Format:</b>	IgG F(ab') <sub>2</sub>

**Target Details**

<b>Reactivity:</b>	Human
<b>Immunogen:</b>	Human IgM Fc5 <sub>μ</sub> fragment

<b>Purity/Specificity:</b>	This product was prepared from monospecific antiserum by immunoaffinity chromatography using Human IgM coupled to agarose beads followed by solid phase adsorption(s) to remove any unwanted reactivities, pepsin digestion and chromatographic separation. Assay by immunoelectrophoresis resulted in a single precipitin arc against anti-Alkaline Phosphatase, anti-Goat Serum, Human IgM and Human Serum. No reaction was observed against anti-Pepsin, anti-Goat IgG F(c), Human IgG or Human IgA. Specificity was confirmed by ELISA at less than 1% cross reactivity against other human heavy or light chain isotypes.
----------------------------	--

## Application Details

<b>Tested Applications:</b>	ELISA
<b>Application Note:</b>	F(ab') <sub>2</sub> Anti-Human IgM Fc5 $\mu$ Alkaline Phosphatase Antibody has been tested by ELISA and is suitable for immunomicroscopy and flow cytometry or FACS analysis as well as other antibody based fluorescent assays requiring lot-to-lot consistency. F(ab') <sub>2</sub> Anti-Human IgM Fc5 $\mu$ antibody has been assayed against 1.0 $\mu$ g of Human IgM in a standard capture ELISA using pNPP p-nitrophenyl phosphate code # NPP-10 as a substrate for 30 minutes at room temperature. A working dilution of 1:4,000 to 1:20,000 of the reconstitution concentration is suggested for this product.
<b>Assay Dilutions:</b>	All assays should be optimized by the user. Recommended dilutions (if any) may be listed below.
<b>ELISA:</b>	1:7,500 - 1:30,000
<b>IHC:</b>	1:200 - 1:1,000
<b>WB:</b>	1:1,000 - 1:5,000

## Formulation

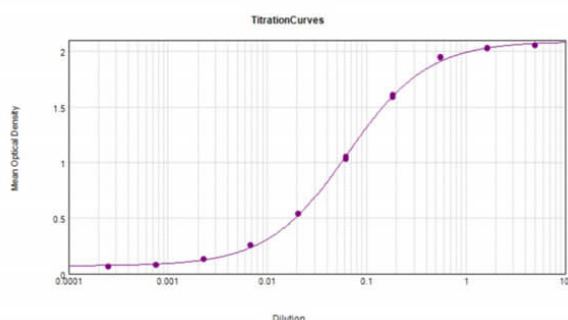
<b>Physical State:</b>	Liquid (sterile filtered)
<b>Concentration:</b>	1.0 mg/mL by UV absorbance at 280 nm
<b>Buffer:</b>	0.05 M Tris Chloride, 0.15M Sodium Chloride, 0.001M Magnesium Chloride, 0.0001M Zinc Chloride, 50% (v/v) Glycerol; pH 8.0
<b>Preservative:</b>	0.01% (w/v) Sodium Azide
<b>Stabilizer:</b>	10 mg/mL Bovine Serum Albumin (BSA) - Immunoglobulin and Protease free

## Shipping & Handling

<b>Shipping Condition:</b>	Wet Ice
----------------------------	---------

<b>Storage Condition:</b>	Store vial at 4° C before opening. DO NOT FREEZE. This product is stable at 4° C as an undiluted liquid. Dilute only prior to immediate use. Freezing alkaline phosphatase conjugates will result in a substantial loss of enzymatic activity.
<b>Expiration:</b>	Expiration date is one (1) year from date of receipt.

## Images



### ELISA

ELISA Results of F(ab')<sub>2</sub> Anti-Human IgM Fc5 $\mu$  (Goat) Antibody Alkaline Phosphatase Conjugated. Each well was coated in duplicate with 1.0  $\mu$ g of Human IgM Fc5 $\mu$  (p/n 009-0131). The working dilution is 15600. The starting dilution of antibody was 5 $\mu$ g/ml and the X-axis represents the Log<sub>10</sub> of a 3-fold dilution. This titration is a 4-parameter curve fit where the IC<sub>50</sub> is defined as the titer of the antibody. Assay performed using TMB substrate p/n TMBE-1000.

## Disclaimer

This product is for research use only and is not intended for therapeutic or diagnostic applications. Please contact a technical service representative for more information. All products of animal origin manufactured by Rockland Immunochemicals are derived from starting materials of North American origin. Collection was performed in United States Department of Agriculture (USDA) inspected facilities and all materials have been inspected and certified to be free of disease and suitable for exportation. All properties listed are typical characteristics and are not specifications. All suggestions and data are offered in good faith but without guarantee as conditions and methods of use of our products are beyond our control. All claims must be made within 30 days following the date of delivery. The prospective user must determine the suitability of our materials before adopting them on a commercial scale. Suggested uses of our products are not recommendations to use our products in violation of any patent or as a license under any patent of Rockland Immunochemicals, Inc. If you require a commercial license to use this material and do not have one, then return this material, unopened to: Rockland Inc., P.O. BOX 5199, Limerick, Pennsylvania, USA.