



# SZABO SCANDIC

Part of Europa Biosite

## Produktinformation



Forschungsprodukte & Biochemikalien



Zellkultur & Verbrauchsmaterial



Diagnostik & molekulare Diagnostik



Laborgeräte & Service

Weitere Information auf den folgenden Seiten!  
See the following pages for more information!



### Lieferung & Zahlungsart

siehe unsere [Liefer- und Versandbedingungen](#)

### Zuschläge

- Mindermengenzuschlag
- Trockeneiszuschlag
- Gefahrgutzuschlag
- Expressversand

### SZABO-SCANDIC HandelsgmbH

Quellenstraße 110, A-1100 Wien

T. +43(0)1 489 3961-0

F. +43(0)1 489 3961-7

[mail@szabo-scandic.com](mailto:mail@szabo-scandic.com)

[www.szabo-scandic.com](http://www.szabo-scandic.com)

[linkedin.com/company/szaboscandic](https://www.linkedin.com/company/szaboscandic) 

**Datasheet for 709-1817**

## **F(ab')<sub>2</sub> Human IgG Fc Pre-adsorbed Phycoerythrin Conjugated Antibody**

### **Overview**

<b>Description:</b>	Goat F(ab') <sub>2</sub> Anti-Human IgG Fc Antibody Phycoerythrin Conjugated (Min X Bv Hs Ms & Rt Serum Proteins) - 709-1817
<b>Item No.:</b>	709-1817
<b>Size:</b>	500 µg
<b>Applications:</b>	Dot Blot, WB, Cellular Assay
<b>Reactivity:</b>	Human
<b>Host Species:</b>	Goat

### **Product Details**

<b>Background:</b>	F(ab') <sub>2</sub> Anti-Human IgG F(c) Phycoerythrin Antibody generated in goat detects Human F(c). Representing approximately 75% of serum immunoglobulins in humans, IgG is the most abundant antibody isotype found in the circulation. IgG molecules are synthesized and secreted by plasma B cells. Secondary Antibodies are available in a variety of formats and conjugate types. When choosing a secondary antibody product, consideration must be given to species and immunoglobulin specificity, conjugate type, fragment and chain specificity, level of cross-reactivity, and host-species source and fragment composition. F(c) Antibody is ideal for investigators who routinely perform flow cytometry, immunohistochemistry or IHC and other immunoassays.
<b>Synonyms:</b>	Goat F(ab') <sub>2</sub> Anti-Human IgG F(c) Phycoerythrin Conjugated Pre-Adsorbed Antibody, Goat Fab2 Anti-Human IgG Fc Fragment Phycoerythrin Conjugated Antibody, Goat F(ab') <sub>2</sub> Anti-Human IgG F(c) Fragment Antibody PE Conjugated
<b>Host Species:</b>	Goat
<b>Specificity:</b>	IgG Fc
<b>Conjugate:</b>	R-Phycoerythrin (RPE)
<b>Clonality:</b>	Polyclonal
<b>Format:</b>	IgG F(ab') <sub>2</sub>

## Target Details

<b>Reactivity:</b>	Human
<b>Immunogen Type:</b>	Native Protein
<b>Immunogen:</b>	Anti-Human IgG was produced by repeated immunization with Human IgG F(c) fragment in goat.
<b>Purity/Specificity:</b>	This product was prepared from monospecific antiserum by immunoaffinity chromatography using Human IgG coupled to agarose beads followed by solid phase adsorption(s) to remove any unwanted reactivities, pepsin digestion and chromatographic separation. Assay by immunoelectrophoresis resulted in a single precipitin arc against anti-Phycoerythrin, anti-Goat Serum, Human IgG, Human IgG F(c) and Human Serum. No reaction was observed against anti-Pepsin, anti-Goat IgG F(c), Human IgG F(ab) or Bovine, Horse, Mouse and Rat Serum Proteins.

## Application Details

<b>Tested Applications:</b>	Dot Blot, WB
<b>Suggested Applications:</b>	Cellular Assay (Based on references)
<b>Application Note:</b>	F(ab') <sub>2</sub> Anti-Human IgG F(c) Phycoerythrin Antibody has been tested by dot blot and western blot and is suitable for immunomicroscopy and flow cytometry or FACS analysis as well as other antibody based fluorescent assays requiring extremely low background levels, absence of F(c) mediated binding, lot-to-lot consistency, high titer and specificity. The maximum amount of reagent required to stain 1 x 10 <sup>6</sup> cells in flow cytometry is approximately 1.0 µg of antibody conjugate. Lesser amounts of reagent may be sufficient for staining. Optimal titers for other applications should be determined by the researcher. As a general guideline dilutions of 1:100 to 1:250 should be suitable for most applications.
<b>Assay Dilutions:</b>	All assays should be optimized by the user. Recommended dilutions (if any) may be listed below.
<b>FC:</b>	1:100 - 1:250
<b>IF:</b>	1:100 - 1:250

## Formulation

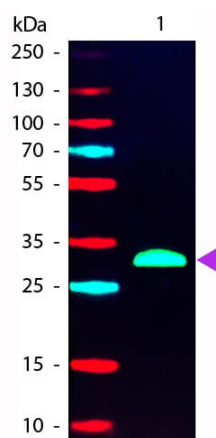
<b>Physical State:</b>	Lyophilized
<b>Concentration:</b>	0.5 mg/mL by absorbance = 82.0 at 565 nm
<b>Buffer:</b>	0.02 M Potassium Phosphate, 0.15 M Sodium Chloride, pH 7.2
<b>Preservative:</b>	0.01% (w/v) Sodium Azide

<b>Stabilizer:</b>	10 mg/mL Bovine Serum Albumin (BSA) - Immunoglobulin and Protease free
<b>Reconstitution Volume:</b>	1.0 mL
<b>Reconstitution Buffer:</b>	Restore with deionized water (or equivalent)

## Shipping & Handling

<b>Shipping Condition:</b>	Ambient
<b>Storage Condition:</b>	Store vial at 4° C prior to restoration. Restore with deionized water (or equivalent). This product is stable at 4° C as an undiluted liquid. Dilute only prior to immediate use. Centrifuge product if not completely clear after standing at room temperature. Do not freeze after reconstitution. Store reagent in the dark. Use subdued lighting during handling and incubation of cells prior to analysis.
<b>Expiration:</b>	Expiration date is one (1) year from date of receipt.

## Images



### Western Blot

Western blot of Phycoerythrin conjugated Goat F(ab')<sub>2</sub> Anti-Human IgG F(c) Pre-Adsorbed secondary antibody. Lane 1: Human Fc. Lane 2: None. Load: 50 ng per lane. Primary antibody: None. Secondary antibody: Phycoerythrin goat secondary antibody at 1:1,000 for 60 min at RT. Blocking: MB-070 for 30 min at RT. Predicted/Observed size: 28 kDa, 28 kDa for Human IgG F(c). Other band(s): None.

## References

- Fujii Y et al. Serological Surveillance Development for Tropical Infectious Diseases Using Simultaneous. *PLoS Negl Trop Dis.* (2014)

## Disclaimer

This product is for research use only and is not intended for therapeutic or diagnostic applications. Please contact a technical service representative for more information. All products of animal origin manufactured by Rockland Immunochemicals are derived from starting materials of North American origin. Collection was performed in United States Department of Agriculture (USDA) inspected facilities and all materials have been inspected and certified to be free of disease and suitable for exportation. All properties listed are typical characteristics and are not specifications. All suggestions and data are offered in good faith but without guarantee as conditions and methods of use of our products are beyond our control. All claims must be made within 30 days following the date of delivery. The prospective user must determine the suitability of our materials before adopting them on a commercial scale. Suggested uses of our products are not recommendations to use our products in violation of any patent or as a license under any patent of Rockland Immunochemicals, Inc. If you require a commercial license to use this material and do not have one, then return this material, unopened to: Rockland Inc., P.O. BOX 5199, Limerick, Pennsylvania, USA.