



SZABO SCANDIC

Part of Europa Biosite

Produktinformation



Forschungsprodukte & Biochemikalien



Zellkultur & Verbrauchsmaterial



Diagnostik & molekulare Diagnostik



Laborgeräte & Service

Weitere Information auf den folgenden Seiten!
See the following pages for more information!



Lieferung & Zahlungsart

siehe unsere [Liefer- und Versandbedingungen](#)

Zuschläge

- Mindermengenzuschlag
- Trockeneiszuschlag
- Gefahrgutzuschlag
- Expressversand

SZABO-SCANDIC HandelsgmbH

Quellenstraße 110, A-1100 Wien

T. +43(0)1 489 3961-0

F. +43(0)1 489 3961-7

mail@szabo-scandic.com

www.szabo-scandic.com

[linkedin.com/company/szaboscandic](https://www.linkedin.com/company/szaboscandic) 

Datasheet for 709-1818**F(ab')₂ Human IgG F(ab')₂ Antibody Phycoerythrin Conjugated Pre-Adsorbed****Overview**

Description:	Goat F(ab') ₂ Anti-Human IgG F(ab') ₂ Antibody Phycoerythrin Conjugated (Min X Bv Hs Ms & Rt Serum Proteins) - 709-1818
Item No.:	709-1818
Size:	500 µg
Applications:	Dot Blot, FC
Reactivity:	Human
Host Species:	Goat

Product Details

Background:	F(ab') ₂ Anti-Human IgG F(ab') ₂ Phycoerythrin Antibody generated in goat detects F(ab') ₂ from human. Representing approximately 75% of serum immunoglobulins in humans, IgG is the most abundant antibody isotype found in the circulation. IgG molecules are synthesized and secreted by plasma B cells. Secondary Antibodies are available in a variety of formats and conjugate types. When choosing a secondary antibody product, consideration must be given to species and immunoglobulin specificity, conjugate type, fragment and chain specificity, level of cross-reactivity, and host-species source and fragment composition. F(ab') ₂ Antibody is ideal for investigators who routinely perform flow cytometry, immunohistochemistry or IHC and other immunoassays.
Synonyms:	Goat F(ab') ₂ Anti-Human IgG F(ab') ₂ Phycoerythrin Conjugated Antibody Pre-Adsorbed, Goat F(ab') ₂ Anti-Human IgG F(ab') ₂ Antibody PE Conjugation
Host Species:	Goat
Specificity:	IgG F(ab') ₂
Conjugate:	R-Phycoerythrin (RPE)
Clonality:	Polyclonal
Format:	IgG F(ab') ₂

Target Details

Reactivity:	Human
Immunogen Type:	Native Protein
Immunogen:	Anti-Human IgG (H&L) was produced by repeated immunization with human IgG F(ab') ₂ fragment in goat.
Purity/Specificity:	This product was prepared from monospecific antiserum by immunoaffinity chromatography using Human IgG coupled to agarose beads followed by solid phase adsorption(s) to remove any unwanted reactivities, pepsin digestion and chromatographic separation. Assay by immunoelectrophoresis resulted in a single precipitin arc against anti-Phycoerythrin, anti-Goat Serum, Human IgG, Human IgG F(ab') ₂ and Human Serum. No reaction was observed against anti-Pepsin, anti-Goat IgG F(c), Human IgG F(c) or Bovine, Horse, Mouse and Rat Serum Proteins.

Application Details

Tested Applications:	Dot Blot
Suggested Applications:	FC (Based on references)
Application Note:	F(ab') ₂ Anti-Human IgG F(ab') ₂ Phycoerythrin Antibody has been tested by dot blot and is ideal for investigators who routinely perform titration assays, and microscopy. Antibody anti-Human F(ab') ₂ phycoerythrin conjugated is suitable for immunomicroscopy and flow cytometry or FACS analysis as well as other antibody based fluorescent assays requiring extremely low background levels, absence of F(c) mediated binding, lot-to-lot consistency, high titer and specificity. The maximum amount of reagent required to stain 1 x 10 ⁶ cells in flow cytometry is approximately 1.0 µg of antibody conjugate. Lesser amounts of reagent may be sufficient for staining. Optimal titers for other applications should be determined by the researcher. As a general guideline dilutions of 1:100 to 1:250 should be suitable for most applications.
Assay Dilutions:	All assays should be optimized by the user. Recommended dilutions (if any) may be listed below.
FC:	1:100 - 1:250
IF:	1:100 - 1:250

Formulation

Physical State:	Lyophilized
Concentration:	0.5 mg/mL by absorbance = 82.0 at 565 nm
Buffer:	0.02 M Potassium Phosphate, 0.15 M Sodium Chloride, pH 7.2
Preservative:	0.01% (w/v) Sodium Azide
Stabilizer:	10 mg/mL Bovine Serum Albumin (BSA) - Immunoglobulin and Protease free
Reconstitution Volume:	1.0 mL

Reconstitution Buffer: Restore with deionized water (or equivalent)

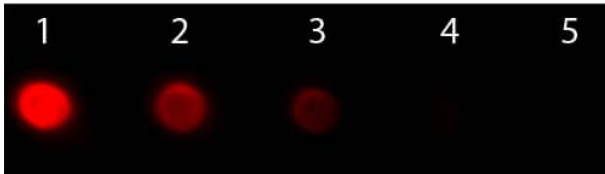
Shipping & Handling

Shipping Condition: Ambient

Storage Condition: Store vial at 4° C prior to restoration. Restore with deionized water (or equivalent). This product is stable at 4° C as an undiluted liquid. Dilute only prior to immediate use. Centrifuge product if not completely clear after standing at room temperature. Do not freeze after reconstitution. Store reagent in the dark. Use subdued lighting during handling and incubation of cells prior to analysis.

Expiration: Expiration date is six (6) months from date of receipt.

Images



Dot Blot

Dot Blot of F(ab')₂ Goat anti-Human IgG F(ab')₂ Antibody Phycoerythrin Conjugated Pre-absorbed. Antigen: Human IgG F(ab')₂. Load: Lane 1 - 100 ng Lane 2 - 33.3 ng Lane 3 - 11.1 ng Lane 4 - 3.70 ng Lane 5 - 1.23 ng. Primary antibody: n/a. Secondary antibody: F(ab')₂ Goat anti-Human IgG F(ab')₂ Antibody Phycoerythrin Conjugated Pre-absorbed at 1:1,000 for 60 min at RT. Block: MB-070 for 60 min at RT.

References

- Katsuragi S et al. Anemic disease of the newborn with little increase in hemolysis and erythropoiesis due to maternal anti-Jra: A case study and review of the literature. *Transfus Med Rev.* (2019)

Disclaimer

This product is for research use only and is not intended for therapeutic or diagnostic applications. Please contact a technical service representative for more information. All products of animal origin manufactured by Rockland Immunochemicals are derived from starting materials of North American origin. Collection was performed in United States Department of Agriculture (USDA) inspected facilities and all materials have been inspected and certified to be free of disease and suitable for exportation. All properties listed are typical characteristics and are not specifications. All suggestions and data are offered in good faith but without guarantee as conditions and methods of use of our products are beyond our control. All claims must be made within 30 days following the date of delivery. The prospective user must determine the suitability of our materials before adopting them on a commercial scale. Suggested uses of our products are not recommendations to use our products in violation of any patent or as a license under any patent of Rockland Immunochemicals, Inc. If you require a commercial license to use this material and do not have one, then return this material, unopened to: Rockland Inc., P.O. BOX 5199, Limerick, Pennsylvania, USA.