



SZABO SCANDIC

Part of Europa Biosite

Produktinformation



Forschungsprodukte & Biochemikalien



Zellkultur & Verbrauchsmaterial



Diagnostik & molekulare Diagnostik



Laborgeräte & Service

Weitere Information auf den folgenden Seiten!
See the following pages for more information!



Lieferung & Zahlungsart

siehe unsere [Liefer- und Versandbedingungen](#)

Zuschläge

- Mindermengenzuschlag
- Trockeneiszuschlag
- Gefahrgutzuschlag
- Expressversand

SZABO-SCANDIC HandelsgmbH

Quellenstraße 110, A-1100 Wien

T. +43(0)1 489 3961-0

F. +43(0)1 489 3961-7

mail@szabo-scandic.com

www.szabo-scandic.com

[linkedin.com/company/szaboscandic](https://www.linkedin.com/company/szaboscandic) 

Datasheet for 710-1332**F(ab')₂ Mouse IgG (H&L) Antibody Peroxidase Conjugated Pre-Adsorbed****Overview**

Description:	Goat F(ab') ₂ Anti-Mouse IgG (H&L) Antibody Peroxidase Conjugated (Min X Bv Hs Hu Rb Rt & Sh Serum Proteins) - 710-1332
Item No.:	710-1332
Size:	500 µg
Applications:	ELISA, WB, IHC
Reactivity:	Mouse
Host Species:	Goat

Product Details

Background:	F(ab') ₂ anti-Mouse IgG (H&L) peroxidase conjugated antibody generated in goat detects specifically mouse IgG (H&L). This secondary conjugated antibody anti-mouse is ideal for investigators who routinely perform titration assays, western-blot, immunoprecipitation and more generally immunoassays.
Synonyms:	Goat F(ab') ₂ Anti-Mouse IgG Antibody Peroxidase Conjugation, Goat Fab2 Anti-Mouse IgG HRP conjugated Antibody
Host Species:	Goat
Specificity:	IgG (H&L)
Conjugate:	Peroxidase (HRP)
Clonality:	Polyclonal
Format:	IgG F(ab') ₂

Target Details

Reactivity:	Mouse
Immunogen Type:	Native Protein
Immunogen:	Anti-Mouse IgG was produced by repeated immunization with Mouse IgG whole molecule in goat.

Purity/Specificity:	This product was prepared from monospecific antiserum by immunoaffinity chromatography using Mouse IgG coupled to agarose beads followed by solid phase adsorption(s) to remove any unwanted reactivities, pepsin digestion and chromatographic separation. Assay by immunoelectrophoresis resulted in a single precipitin arc against anti-Peroxidase, anti-Goat Serum, Mouse IgG and Mouse Serum. No reaction was observed against anti-Pepsin, anti-Goat IgG F(c) or Bovine, Horse, Human, Rabbit, Rat and Sheep Serum Proteins.
----------------------------	---

Application Details

Tested Applications:	ELISA, WB
Suggested Applications:	IHC (Based on references)
Application Note:	F(ab') ₂ anti-Mouse IgG (H&L) peroxidase conjugated antibody has been tested by ELISA and western blot and is suitable for highly specific immunological methods requiring extremely low background levels, lot-to-lot consistency, high titer and specificity.
Assay Dilutions:	All assays should be optimized by the user. Recommended dilutions (if any) may be listed below.
ELISA:	1:300:000
IHC:	1:500 - 1:2,500
WB:	1:1,000 - 1:10,000

Formulation

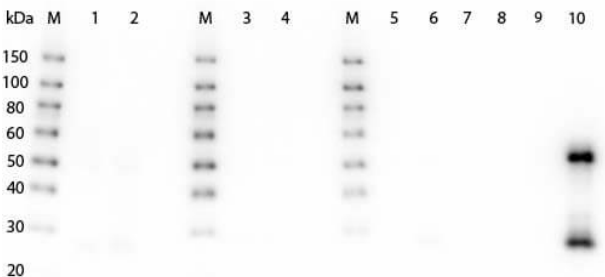
Physical State:	Lyophilized
Concentration:	1.0 mg/mL by UV absorbance at 280 nm
Buffer:	0.02 M Potassium Phosphate, 0.15 M Sodium Chloride, pH 7.2
Preservative:	0.01% (w/v) Gentamicin Sulfate. Do NOT add Sodium Azide!
Stabilizer:	10 mg/mL Bovine Serum Albumin (BSA) - Immunoglobulin and Protease free
Reconstitution Volume:	500 µL
Reconstitution Buffer:	Restore with deionized water (or equivalent)

Shipping & Handling

Shipping Condition:	Ambient
----------------------------	---------

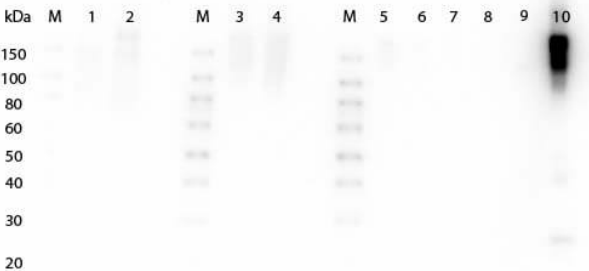
Storage Condition:	Store vial at 4° C prior to restoration. For extended storage aliquot contents and freeze at -20° C or below. Avoid cycles of freezing and thawing. Centrifuge product if not completely clear after standing at room temperature. This product is stable for several weeks at 4° C as an undiluted liquid. Dilute only prior to immediate use.
Expiration:	Expiration date is one (1) year from date of receipt.

Images



Western Blot

Western Blot of Goat anti-Fab2 Mouse IgG Antibody Peroxidase Conjugated Pre-Absorbed. Lane 1: Rabbit Serum. Lane 2: Rabbit Serum. Lane 3: Human Serum. Lane 4: Human Serum. Lane 5: Human IgG. Lane 6: Rat IgG. Lane 7: Bovine IgG. Lane 8: Horse IgG. Lane 9: Rabbit IgG. Lane 10: Mouse IgG. Load: Lane 1, 3 - 2 uL, Lane 2, 4 - 5 uL, Lanes 5 through 10 - 100 ng. Primary Antibody: none Secondary Antibody: Goat anti-Fab2 Mouse IgG Antibody Peroxidase Conjugated Pre-Absorbed at 1:5,000 for 1 HR at RT. Block: MB-070 for 30 min at RT. Predicted/Observed size: 55, 25 kDa for Mouse IgG.



Western Blot

Western Blot of Goat anti-Fab2 Mouse IgG Antibody Peroxidase Conjugated Pre-Absorbed. Lane 1: Rabbit Serum. Lane 2: Rabbit Serum. Lane 3: Human Serum. Lane 4: Human Serum. Lane 5: Human IgG. Lane 6: Rat IgG. Lane 7: Bovine IgG. Lane 8: Horse IgG. Lane 9: Rabbit IgG. Lane 10: Mouse IgG. Load: Lane 1, 3 - 2 uL, Lane 2, 4 - 5 uL, Lanes 5 through 10 - 100 ng. Primary Antibody: none Secondary Antibody: Goat anti-Fab2 Mouse IgG Antibody Peroxidase Conjugated Pre-Absorbed at 1:5,000 for 1 HR at RT. Block: MB-070 for 30 min at RT. Predicted/Observed size: 160 kDa for Mouse IgG.

References

- Iwata-Yoshikawa N et al. Essential role of TMPRSS2 in SARS-CoV-2 infection in murine airways. *Nat Commun.* (2022)
- Nariai Y et al. Generation and characterization of antagonistic anti-human interleukin (IL)-18 monoclonal antibodies with high affinity: two types of monoclonal antibodies against full-length IL-18 and the neoepitope of inflammatory caspase-cleaved active IL-18. *Arch Biochem Biophys.* (2019)
- Nakayama et al. Cancer-related transcription regulator protein NAC1 forms a protein complex with CARM1 for ovarian cancer progression. *Oncotarget* (2018)
- Tomiyama et al. Precise epitope determination of the anti-vimentin monoclonal antibody V9. *Molecular Medicine Reports* (2017)
- Tamura K et al. G196 epitope tag system: a novel monoclonal antibody, G196, recognizes the small, soluble peptide DLVPR with high affinity. *Sci Rep.* (2017)
- Tamura K et al. Gene expression analysis detected a low expression level of C1s gene in ICR-derived glomerulonephritis (ICGN) mice. *Nephron Exp Nephrol.* (2013)

Disclaimer

This product is for research use only and is not intended for therapeutic or diagnostic applications. Please contact a technical service representative for more information. All products of animal origin manufactured by Rockland Immunochemicals are derived from starting materials of North American origin. Collection was performed in United States Department of Agriculture (USDA) inspected facilities and all materials have been inspected and certified to be free of disease and suitable for exportation. All properties listed are typical characteristics and are not specifications. All suggestions and data are offered in good faith but without guarantee as conditions and methods of use of our products are beyond our control. All claims must be made within 30 days following the date of delivery. The prospective user must determine the suitability of our materials before adopting them on a commercial scale. Suggested uses of our products are not recommendations to use our products in violation of any patent or as a license under any patent of Rockland Immunochemicals, Inc. If you require a commercial license to use this material and do not have one, then return this material, unopened to: Rockland Inc., P.O. BOX 5199, Limerick, Pennsylvania, USA.