



SZABO SCANDIC

Part of Europa Biosite

Produktinformation



Forschungsprodukte & Biochemikalien



Zellkultur & Verbrauchsmaterial



Diagnostik & molekulare Diagnostik



Laborgeräte & Service

Weitere Information auf den folgenden Seiten!
See the following pages for more information!



Lieferung & Zahlungsart

siehe unsere [Liefer- und Versandbedingungen](#)

Zuschläge

- Mindermengenzuschlag
- Trockeneiszuschlag
- Gefahrgutzuschlag
- Expressversand

SZABO-SCANDIC HandelsgmbH

Quellenstraße 110, A-1100 Wien

T. +43(0)1 489 3961-0

F. +43(0)1 489 3961-7

mail@szabo-scandic.com

www.szabo-scandic.com

[linkedin.com/company/szaboscandic](https://www.linkedin.com/company/szaboscandic) 

Datasheet for 710-708-124**F(ab')₂ Mouse IgG (H&L) Antibody Phycoerythrin Conjugated Pre-Adsorbed****Overview**

Description:	Donkey F(ab') ₂ Anti-Mouse IgG (H&L) Antibody Phycoerythrin Conjugated (Min X Bv Ch Gt GP Ham Hs Hu Rb Rt & Sh Serum Proteins) - 710-708-124
Item No.:	710-708-124
Size:	500 µg
Applications:	Dot Blot
Reactivity:	Mouse
Host Species:	Donkey

Product Details

Background:	F(ab') ₂ Anti-Mouse IgG whole molecule generated in donkey detects specifically Mouse IgG whole molecule. This secondary antibody anti-Mouse is ideal for investigators who routinely perform ELISA, Sandwich ELISA, titration assays, western-blot, immunoprecipitation and more generally immunoassays.
Synonyms:	Donkey F(ab') ₂ Anti-Mouse IgG Antibody Phycoerythrin Conjugation, Donkey Fab2 Anti-Mouse IgG PE Conjugated Antibody
Host Species:	Donkey
Specificity:	IgG (H&L)
Conjugate:	R-Phycoerythrin (RPE)
Clonality:	Polyclonal
Format:	IgG F(ab') ₂
F/P Ratio:	5.6

Target Details

Reactivity:	Mouse
Immunogen Type:	Native Protein

Immunogen:	F(ab') ₂ Anti-Mouse IgG whole molecule was produced by repeated immunization with Mouse IgG whole molecule in donkey.
Purity/Specificity:	F(ab') ₂ fragment PE conjugated secondary antibody was prepared from monospecific antiserum by immunoaffinity chromatography using Mouse IgG coupled to agarose beads followed by solid phase adsorption(s) to remove any unwanted reactivities, pepsin digestion and chromatographic separation. Assay by immunoelectrophoresis resulted in a single precipitin arc against anti-Phycoerythrin, anti-Donkey Serum, Mouse IgG and Mouse Serum. No reaction was observed against anti-Pepsin, anti-Donkey IgG F(c), Bovine, Chicken, Goat, Guinea Pig, Hamster, Horse, Human, Rabbit, Rat or Sheep Serum Proteins.

Application Details

Tested Applications:	Dot Blot
Application Note:	F(ab') ₂ Anti-Mouse IgG Phycoerythrin has been tested by dot blot and is suitable for immunomicroscopy and flow cytometry or FACS analysis as well as other antibody based fluorescent assays requiring extremely low background levels, absence of F(c) mediated binding, lot-to-lot consistency, high titer and specificity. The maximum amount of reagent required to stain 1 x 10 ⁶ cells in flow cytometry is approximately 1.0 µg of antibody conjugate. Lesser amounts of reagent may be sufficient for staining. Optimal titers for other applications should be determined by the researcher. As a general guideline dilutions of 1:100 to 1:250 should be suitable for most applications.
Assay Dilutions:	All assays should be optimized by the user. Recommended dilutions (if any) may be listed below.
FC:	1:100 - 1:250
IF:	1:100 - 1:250

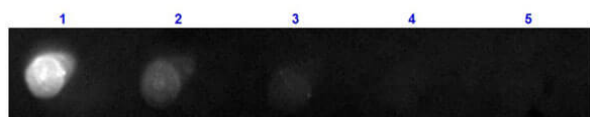
Formulation

Physical State:	Lyophilized
Concentration:	0.5 mg/mL by absorbance = 82.0 at 565 nm
Buffer:	0.02 M Potassium Phosphate, 0.15 M Sodium Chloride, pH 7.2
Preservative:	0.01% (w/v) Sodium Azide
Stabilizer:	10 mg/mL Bovine Serum Albumin (BSA) - Immunoglobulin and Protease free
Reconstitution Volume:	1.0 mL
Reconstitution Buffer:	Restore with deionized water (or equivalent)

Shipping & Handling

Shipping Condition:	Ambient
Storage Condition:	Store vial at 4° C prior to restoration. Restore with deionized water (or equivalent). This product is stable at 4° C as an undiluted liquid. Dilute only prior to immediate use. Centrifuge product if not completely clear after standing at room temperature. Do not freeze after reconstitution. Store reagent in the dark. Use subdued lighting during handling and incubation of cells prior to analysis.
Expiration:	Expiration date is one (1) year from date of receipt.

Images



Dot Blot

Dot Blot results of Donkey F(ab')₂ Anti-Mouse IgG Antibody Phycoerythrin Conjugated. Dots are Mouse IgG at (1) 100ng, (2) 33.3ng, (3) 11.1ng, (4) 3.70ng, (5) 1.23ng. Blocking: MB-070 for 60 min at RT. Primary Antibody: Donkey F(ab')₂ Anti-Mouse IgG Antibody Phycoerythrin at 1µg/mL for 1hr at RT. Secondary Antibody: none. Imaged with BioRad ChemiDoc, Rhodamine filter.



Dot Blot

Dot Blot of F(ab')₂ Donkey Anti-Mouse IgG Antibody Phycoerythrin conjugated Min X Bv Ch Gt GP Ham Hs Hu Rb Rt & Sh Serum Proteins. Antigen: Mouse IgG. Load: 100 ng, 33.3 ng, 11.1 ng, 3.7 ng or 1.23 ng as indicated. Primary antibody: N/A. Secondary antibody: F(ab')₂ Donkey Anti-Mouse IgG Antibody Phycoerythrin conjugated Min X Bv Ch Gt GP Ham Hs Hu Rb Rt & Sh Serum Proteins at 1:1,000 for 60 min at RT. Block: Blocking Buffer for Fluorescent Western Blotting (MB-070) for 60 min at RT.

Disclaimer

This product is for research use only and is not intended for therapeutic or diagnostic applications. Please contact a technical service representative for more information. All products of animal origin manufactured by Rockland Immunochemicals are derived from starting materials of North American origin. Collection was performed in United States Department of Agriculture (USDA) inspected facilities and all materials have been inspected and certified to be free of disease and suitable for exportation. All properties listed are typical characteristics and are not specifications. All suggestions and data are offered in good faith but without guarantee as conditions and methods of use of our products are beyond our control. All claims must be made within 30 days following the date of delivery. The prospective user must determine the suitability of our materials before adopting them on a commercial scale. Suggested uses of our products are not recommendations to use our products in violation of any patent or as a license under any patent of Rockland Immunochemicals, Inc. If you require a commercial license to use this material and do not have one, then return this material, unopened to: Rockland Inc., P.O. BOX 5199, Limerick, Pennsylvania, USA.