



SZABO SCANDIC

Part of Europa Biosite

Produktinformation



Forschungsprodukte & Biochemikalien



Zellkultur & Verbrauchsmaterial



Diagnostik & molekulare Diagnostik



Laborgeräte & Service

Weitere Information auf den folgenden Seiten!
See the following pages for more information!



Lieferung & Zahlungsart

siehe unsere [Liefer- und Versandbedingungen](#)

Zuschläge

- Mindermengenzuschlag
- Trockeneiszuschlag
- Gefahrgutzuschlag
- Expressversand

SZABO-SCANDIC HandelsgmbH

Quellenstraße 110, A-1100 Wien

T. +43(0)1 489 3961-0

F. +43(0)1 489 3961-7

mail@szabo-scandic.com

www.szabo-scandic.com

[linkedin.com/company/szaboscandic](https://www.linkedin.com/company/szaboscandic) 

Datasheet for 711-108-002**F(ab')₂ Rabbit IgG (H&L) Antibody Phycoerythrin conjugated****Overview**

Description:	Goat F(ab') ₂ Anti-Rabbit IgG (H&L) Antibody Phycoerythrin Conjugated - 711-108-002
Item No.:	711-108-002
Size:	500 µg
Applications:	Dot Blot
Reactivity:	Rabbit
Host Species:	Goat

Product Details

Background:	F(ab') ₂ Anti-Rabbit IgG (H&L) Antibody generated in goat detects immunoglobulin g from Rabbit, both heavy and light chains of the antibody molecule are present. Each IgG has two antigen binding sites. Representing approximately 75% of serum immunoglobulins, IgG is the most abundant antibody isotype found in the circulation. IgG molecules are synthesized and secreted by plasma B cells. Secondary Antibodies are available in a variety of formats and conjugate types. When choosing a secondary antibody product, consideration must be given to species and immunoglobulin specificity, conjugate type, fragment and chain specificity, level of cross-reactivity, and host-species source and fragment composition. F(ab') ₂ Antibody is ideal for investigators who routinely perform flow cytometry, immunohistochemistry or IHC and other immunoassays. This F(ab') ₂ Anti-Rabbit IgG Antibody is conjugated to Phycoerythrin.
Synonyms:	Goat F(ab') ₂ Anti-Rabbit IgG Phycoerythrin Conjugated Antibody, Goat Fab2 Anti-Rabbit IgG Antibody PE Conjugation
Host Species:	Goat
Specificity:	IgG (H&L)
Conjugate:	R-Phycoerythrin (RPE)
Clonality:	Polyclonal
Format:	IgG F(ab') ₂

Target Details

Reactivity:	Rabbit
--------------------	--------

Immunogen:	Rabbit IgG whole molecule
Purity/Specificity:	This product was prepared from monospecific antiserum by immunoaffinity chromatography using Rabbit IgG coupled to agarose beads followed by pepsin digestion and chromatographic separation. Coupling to R-PE was followed by size exclusion chromatography to purify conjugate from unreacted R-PE and antibody. Assay by immunoelectrophoresis resulted in a single precipitin arc against anti-Phycoerythrin, anti-Goat Serum, Rabbit IgG and Rabbit Serum. No reaction was observed against anti-Pepsin or anti-Goat IgG F(c).

Application Details

Tested Applications:	Dot Blot
Application Note:	F(ab') ₂ Anti-Rabbit IgG Phycoerythrin Conjugated Secondary Antibody has been tested by dot blot and is ideal for ELISA, western blotting, Immunohistochemistry, as well as other antibody detection methods.
Assay Dilutions:	All assays should be optimized by the user. Recommended dilutions (if any) may be listed below.
FC:	1:100 - 1:250
IF:	1:100 - 1:250

Formulation

Physical State:	Lyophilized
Concentration:	0.5 mg/mL by absorbance = 82.0 at 565 nm
Buffer:	0.02 M Potassium Phosphate, 0.15 M Sodium Chloride, pH 7.2
Preservative:	0.01% (w/v) Sodium Azide
Stabilizer:	10 mg/mL Bovine Serum Albumin (BSA) - Immunoglobulin and Protease free
Reconstitution Volume:	1.0 mL
Reconstitution Buffer:	Restore with deionized water (or equivalent)

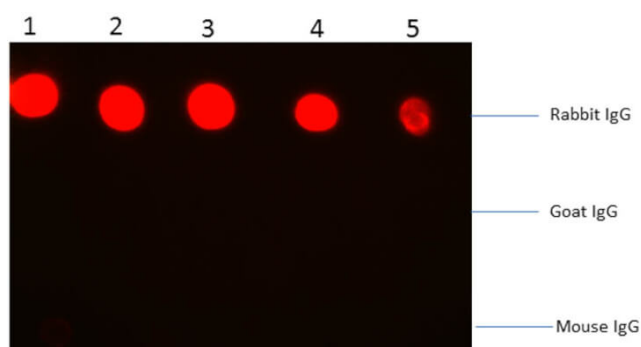
Shipping & Handling

Shipping Condition:	Ambient
----------------------------	---------

Storage Condition: Store vial at 4° C prior to restoration. Restore with deionized water (or equivalent). This product is stable at 4° C as an undiluted liquid. Dilute only prior to immediate use. Centrifuge product if not completely clear after standing at room temperature. Do not freeze after reconstitution. Store reagent in the dark. Use subdued lighting during handling and incubation of cells prior to analysis.

Expiration: Expiration date is one (1) year from date of receipt.

Images



Dot Blot

Dot Blot of Fab2 Goat anti-Rabbit IgG Antibody Phycoerythrin Conjugated. Antigen: Row 1: Rabbit IgG Row 2: Goat IgG Row 3: Mouse IgG Load: Lane 1 - 200ng Lane 2 - 66.7ng Lane 3 - 22.2ng Lane 4 - 7.4ng Lane 5 - 2.5ng Primary antibody: N/A Secondary antibody: Fab2 Goat anti-Rabbit IgG Antibody Phycoerythrin Conjugated at 1:1,000 for 60 min at RT. Block: MB-070 for 1 hour at RT

Disclaimer

This product is for research use only and is not intended for therapeutic or diagnostic applications. Please contact a technical service representative for more information. All products of animal origin manufactured by Rockland Immunochemicals are derived from starting materials of North American origin. Collection was performed in United States Department of Agriculture (USDA) inspected facilities and all materials have been inspected and certified to be free of disease and suitable for exportation. All properties listed are typical characteristics and are not specifications. All suggestions and data are offered in good faith but without guarantee as conditions and methods of use of our products are beyond our control. All claims must be made within 30 days following the date of delivery. The prospective user must determine the suitability of our materials before adopting them on a commercial scale. Suggested uses of our products are not recommendations to use our products in violation of any patent or as a license under any patent of Rockland Immunochemicals, Inc. If you require a commercial license to use this material and do not have one, then return this material, unopened to: Rockland Inc., P.O. BOX 5199, Limerick, Pennsylvania, USA.