



SZABO SCANDIC

Part of Europa Biosite

Produktinformation



Forschungsprodukte & Biochemikalien



Zellkultur & Verbrauchsmaterial



Diagnostik & molekulare Diagnostik



Laborgeräte & Service

Weitere Information auf den folgenden Seiten!
See the following pages for more information!



Lieferung & Zahlungsart

siehe unsere [Liefer- und Versandbedingungen](#)

Zuschläge

- Mindermengenzuschlag
- Trockeneiszuschlag
- Gefahrgutzuschlag
- Expressversand

SZABO-SCANDIC HandelsgmbH

Quellenstraße 110, A-1100 Wien

T. +43(0)1 489 3961-0

F. +43(0)1 489 3961-7

mail@szabo-scandic.com

www.szabo-scandic.com

[linkedin.com/company/szaboscandic](https://www.linkedin.com/company/szaboscandic)



Datasheet for 711-1124**F(ab')₂ Rabbit IgG F(ab')₂ Antibody Pre-Adsorbed****Overview**

Description:	Goat F(ab') ₂ Anti-Rabbit IgG F(ab') ₂ Antibody (Min X Bv Hs Hu Ms Rt & Sh Serum Proteins) - 711-1124
Item No.:	711-1124
Size:	500 µg
Applications:	ELISA, WB
Reactivity:	Rabbit
Host Species:	Goat

Product Details

Background:	F(ab') ₂ Anti-Rabbit IgG F(ab') ₂ Antibody generated in goat detects Rabbit F(ab') ₂ . Representing approximately 75% of serum immunoglobulins, IgG is the most abundant antibody isotype found in the circulation. IgG molecules are synthesized and secreted by plasma B cells. Secondary Antibodies are available in a variety of formats and conjugate types. When choosing a secondary antibody product, consideration must be given to species and immunoglobulin specificity, conjugate type, fragment and chain specificity, level of cross-reactivity, and host-species source and fragment composition. F(ab') ₂ Antibody is ideal for investigators who routinely perform flow cytometry, immunohistochemistry or IHC and other immunoassays.
Synonyms:	Goat F(ab') ₂ Anti-Rabbit IgG F(ab') ₂ Antibody, Goat Fab2 Anti-Rabbit IgG Fab2 Antibody
Host Species:	Goat
Specificity:	IgG F(ab') ₂
Clonality:	Polyclonal
Format:	IgG F(ab') ₂

Target Details

Reactivity:	Rabbit
Immunogen:	Rabbit IgG F(ab') ₂ fragment

Purity/Specificity:	This product was prepared from monospecific antiserum by immunoaffinity chromatography using Rabbit IgG coupled to agarose beads followed by solid phase adsorption(s) to remove any unwanted reactivities, pepsin digestion and chromatographic separation. Assay by immunoelectrophoresis resulted in a single precipitin arc against anti-Goat Serum, Rabbit IgG, Rabbit IgG F(ab') ₂ and Rabbit Serum. No reaction was observed against anti-Pepsin, anti-Goat IgG F(c), Rabbit IgG F(c) or Bovine, Horse, Human, Mouse, Rat and Sheep Serum Proteins.
----------------------------	---

Application Details

Tested Applications:	ELISA, WB
Application Note:	F(ab') ₂ Anti-Rabbit IgG F(ab') ₂ Antibody has been tested by ELISA and western blot and is suitable for immunomicroscopy and flow cytometry or FACS analysis as well as other antibody based fluorescent assays requiring extremely low background levels, absence of F(c) mediated binding, lot-to-lot consistency, high titer and specificity. The maximum amount of reagent required to stain 1 x 10 ⁶ cells in flow cytometry is approximately 1.0 µg of antibody. Lesser amounts of reagent may be sufficient for staining. Optimal titers for other applications should be determined by the researcher. As a general guideline dilutions of 1:100 to 1:250 should be suitable for most applications.
Assay Dilutions:	All assays should be optimized by the user. Recommended dilutions (if any) may be listed below.
ELISA:	1:10,000 - 1:50,000
IHC:	1:500 - 1:3,000
WB:	1:1,000 - 1:5,000

Formulation

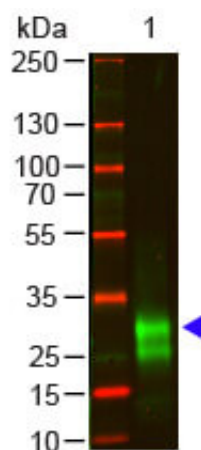
Physical State:	Liquid (sterile filtered)
Concentration:	1.0 mg/mL by UV absorbance at 280 nm
Buffer:	0.01 M Sodium Phosphate, 0.15 M Sodium Chloride, pH 7.2
Preservative:	0.01% (w/v) Sodium Azide
Stabilizer:	None

Shipping & Handling

Shipping Condition:	Wet Ice
----------------------------	---------

Storage Condition:	Store vial at 4° C prior to opening. This product is stable for several weeks at 4° C as an undiluted liquid. Dilute only prior to immediate use. For extended storage aliquot contents and freeze at -20° C or below. Avoid cycles of freezing and thawing.
Expiration:	Expiration date is one (1) year from date of receipt.

Images



Western Blot

Western Blot of Goat anti-F(ab')₂ Rabbit IgG F(ab')₂ Antibody Pre-Adsorbed. Lane 1: Rabbit IgG F(ab')₂ (p/n 011-0104). Load: 100 ng per lane. Primary antibody: F(ab')₂ Rabbit IgG F(ab')₂ Antibody Pre-Adsorbed at 1:1000 o/n at 4°C. Secondary antibody: DyLight™ 800 Donkey anti-goat (p/n 605-745-002) at 1:20,000 for 30 min at RT. Block: MB-070 for 30 min at RT. Predicted/Observed size: 28 kDa, 28 kDa. Other band(s): antigen breakdown.

Disclaimer

This product is for research use only and is not intended for therapeutic or diagnostic applications. Please contact a technical service representative for more information. All products of animal origin manufactured by Rockland Immunochemicals are derived from starting materials of North American origin. Collection was performed in United States Department of Agriculture (USDA) inspected facilities and all materials have been inspected and certified to be free of disease and suitable for exportation. All properties listed are typical characteristics and are not specifications. All suggestions and data are offered in good faith but without guarantee as conditions and methods of use of our products are beyond our control. All claims must be made within 30 days following the date of delivery. The prospective user must determine the suitability of our materials before adopting them on a commercial scale. Suggested uses of our products are not recommendations to use our products in violation of any patent or as a license under any patent of Rockland Immunochemicals, Inc. If you require a commercial license to use this material and do not have one, then return this material, unopened to: Rockland Inc., P.O. BOX 5199, Limerick, Pennsylvania, USA.