



SZABO SCANDIC

Part of Europa Biosite

Produktinformation



Forschungsprodukte & Biochemikalien



Zellkultur & Verbrauchsmaterial



Diagnostik & molekulare Diagnostik



Laborgeräte & Service

Weitere Information auf den folgenden Seiten!
See the following pages for more information!



Lieferung & Zahlungsart

siehe unsere [Liefer- und Versandbedingungen](#)

Zuschläge

- Mindermengenzuschlag
- Trockeneiszuschlag
- Gefahrgutzuschlag
- Expressversand

SZABO-SCANDIC HandelsgmbH

Quellenstraße 110, A-1100 Wien

T. +43(0)1 489 3961-0

F. +43(0)1 489 3961-7

mail@szabo-scandic.com

www.szabo-scandic.com

[linkedin.com/company/szaboscandic](https://www.linkedin.com/company/szaboscandic) 

Datasheet for 711-1603**F(ab')₂ Rabbit IgG Fc Antibody Biotin Conjugated****Overview**

Description:	Goat F(ab') ₂ Anti-Rabbit IgG Fc Antibody Biotin Conjugated - 711-1603
Item No.:	711-1603
Size:	500 µg
Applications:	WB
Reactivity:	Rabbit
Host Species:	Goat

Product Details

Background:	F(ab') ₂ Anti-Rabbit IgG F(c) Biotin Antibody was generated in goat and detects specifically Rabbit IgG F(c). Secondary Antibodies are available in a variety of formats and conjugate types. When choosing a secondary antibody product, consideration must be given to species and immunoglobulin specificity, conjugate type, fragment and chain specificity, level of cross-reactivity, and host-species source and fragment composition.
Synonyms:	Goat F(ab') ₂ Anti-Rabbit IgG F(c) Biotin Conjugated Antibody, Goat Fab2 Anti-Rabbit IgG Fc Antibody Biotin Conjugation
Host Species:	Goat
Specificity:	IgG Fc
Conjugate:	Biotin
Clonality:	Polyclonal
Format:	IgG F(ab') ₂

Target Details

Reactivity:	Rabbit
Immunogen:	Rabbit IgG F(c) fragment

Purity/Specificity:	F(ab') fragment biotin conjugated secondary antibody was prepared from monospecific antiserum by immunoaffinity chromatography using Rabbit IgG coupled to agarose beads followed by solid phase adsorption(s) to remove any unwanted reactivities, pepsin digestion and chromatographic separation. Assay by immunoelectrophoresis resulted in a single precipitin arc against anti-Biotin, anti-Goat Serum, Rabbit IgG, Rabbit IgG F(c) and Rabbit Serum. No reaction was observed against anti-Pepsin, anti-Goat IgG F(c) or Rabbit IgG F(ab).
----------------------------	---

Application Details

Tested Applications:	WB
Application Note:	F(ab') ₂ Anti-Rabbit IgG F(c) Biotin Antibody has been tested by western blot and is assayed against 1.0 ug of Rabbit IgG in a standard capture ELISA using Peroxidase Conjugated Streptavidin #S000-03 and ABTS (2,2'-azino-bis-[3-ethylbenthiazoline-6-sulfonic acid]) code # ABTS-100 as a substrate for 30 minutes at room temperature. A working dilution of 1:12,000 to 1:60,000 of the reconstitution concentration is suggested for this product. Suitable for immunomicroscopy and flow cytometry or FACS analysis as well as other antibody based fluorescent assays requiring lot-to-lot consistency.
Assay Dilutions:	All assays should be optimized by the user. Recommended dilutions (if any) may be listed below.
ELISA:	1:20,000 - 1:100,000
IHC:	1:1,000 - 1:5,000
WB:	1:2,000 - 1:10,000

Formulation

Physical State:	Lyophilized
Concentration:	1.0 mg/mL by UV absorbance at 280 nm
Buffer:	0.02 M Potassium Phosphate, 0.15 M Sodium Chloride, pH 7.2
Preservative:	0.01% (w/v) Sodium Azide
Stabilizer:	10 mg/mL Bovine Serum Albumin (BSA) - Immunoglobulin and Protease free
Reconstitution Volume:	500 µL
Reconstitution Buffer:	Restore with deionized water (or equivalent)

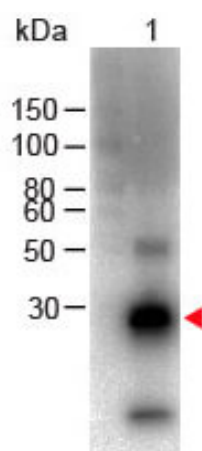
Shipping & Handling

Shipping Condition:	Ambient
----------------------------	---------

Storage Condition: Store vial at 4° C prior to restoration. For extended storage aliquot contents and freeze at -20° C or below. Avoid cycles of freezing and thawing. Centrifuge product if not completely clear after standing at room temperature. This product is stable for several weeks at 4° C as an undiluted liquid. Dilute only prior to immediate use.

Expiration: Expiration date is one (1) year from date of receipt.

Images



Western Blot

Western Blot of Goat anti-F(ab')₂ Rabbit IgG F(c) Antibody Biotin Conjugated Lane 1: Rabbit Fc Load: 100 ng per lane
 Primary antibody: F(ab')₂ Rabbit IgG F(c) Antibody Biotin Conjugated at 1:1000 for overnight at 4°C
 Secondary antibody: HRP Streptavidin at 1:40,000 for 30 min at RT
 Block: MB-070 for 30 min RT Predicted/Observed size: 28 kDa, 28 kDa

Disclaimer

This product is for research use only and is not intended for therapeutic or diagnostic applications. Please contact a technical service representative for more information. All products of animal origin manufactured by Rockland Immunochemicals are derived from starting materials of North American origin. Collection was performed in United States Department of Agriculture (USDA) inspected facilities and all materials have been inspected and certified to be free of disease and suitable for exportation. All properties listed are typical characteristics and are not specifications. All suggestions and data are offered in good faith but without guarantee as conditions and methods of use of our products are beyond our control. All claims must be made within 30 days following the date of delivery. The prospective user must determine the suitability of our materials before adopting them on a commercial scale. Suggested uses of our products are not recommendations to use our products in violation of any patent or as a license under any patent of Rockland Immunochemicals, Inc. If you require a commercial license to use this material and do not have one, then return this material, unopened to: Rockland Inc., P.O. BOX 5199, Limerick, Pennsylvania, USA.