



SZABO SCANDIC

Part of Europa Biosite

Produktinformation



Forschungsprodukte & Biochemikalien



Zellkultur & Verbrauchsmaterial



Diagnostik & molekulare Diagnostik



Laborgeräte & Service

Weitere Information auf den folgenden Seiten!
See the following pages for more information!



Lieferung & Zahlungsart

siehe unsere [Liefer- und Versandbedingungen](#)

Zuschläge

- Mindermengenzuschlag
- Trockeneiszuschlag
- Gefahrgutzuschlag
- Expressversand

SZABO-SCANDIC HandelsgmbH

Quellenstraße 110, A-1100 Wien

T. +43(0)1 489 3961-0

F. +43(0)1 489 3961-7

mail@szabo-scandic.com

www.szabo-scandic.com

[linkedin.com/company/szaboscandic](https://www.linkedin.com/company/szaboscandic) 

Datasheet for 711-708-127

F(ab')₂ Rabbit IgG (H&L) Antibody Phycoerythrin Conjugated Pre-adsorbed

Overview

Description:	Donkey F(ab') ₂ Anti-Rabbit IgG (H&L) Antibody Phycoerythrin Conjugated (Min X Bv Ch Gt GP Ham Hs Hu Ms Rt & Sh Serum Proteins) - 711-708-127
Item No.:	711-708-127
Size:	500 µg
Applications:	WB
Reactivity:	Rabbit
Host Species:	Donkey

Product Details

Background:	F(ab') ₂ Anti-Rabbit IgG [H&L] Antibody Phycoerythrin Conjugated Pre-adsorbed was generated by enzymatic cleavage and subsequent separation from the Fc fragment. Because of their smaller size, F(ab') ₂ fragments offer several advantages over intact antibodies for use in certain immunochemical techniques and experimental applications. F(ab') ₂ fragments penetrate into tissue samples and show better antigen recognition and signal generation in IHC. F(ab') ₂ fragments lack the Fc region and therefore do not bind Fc receptors which effectively lowers background staining. F(ab') ₂ Rabbit IgG [H&L] Antibody Phycoerythrin conjugated Pre-adsorbed is ideal for investigators who routinely perform flow cytometry, immunohistochemistry or IHC and other immunoassays.
Synonyms:	Donkey F(ab') ₂ Anti-Rabbit IgG Phycoerythrin Conjugated Antibody, Donkey Fab2 Anti-Rabbit IgG Antibody PE Conjugation
Host Species:	Donkey
Specificity:	IgG (H&L)
Conjugate:	R-Phycoerythrin (RPE)
Clonality:	Polyclonal
Format:	IgG F(ab') ₂

Target Details

Reactivity:	Rabbit
Immunogen Type:	Native Protein
Immunogen:	Fab2 Anti-Rabbit IgG was produced by repeated immunization with Rabbit IgG whole molecule in donkey.
Purity/Specificity:	F(ab') ₂ Anti-Rabbit IgG (H&L) Phycoerythrin Conjugated Antibody Pre-adsorbed was prepared from monospecific antiserum by immunoaffinity chromatography using Rabbit IgG coupled to agarose beads followed by solid phase adsorption(s) to remove any unwanted reactivities, pepsin digestion and chromatographic separation. Assay by immunoelectrophoresis resulted in a single precipitin arc against anti-Phycoerythrin, anti-Donkey Serum, Rabbit IgG and Rabbit Serum. No reaction was observed against anti-Pepsin, anti-Donkey IgG F(c) or to Bovine, Chicken, Goat, Guinea Pig, Hamster, Horse, Human, Mouse, Rat & Sheep Serum Proteins.

Application Details

Tested Applications:	WB
Application Note:	F(ab') ₂ Rabbit IgG Phycoerythrin Conjugated Antibody was tested in WB, and is suitable for immunomicroscopy, flow cytometry or FACS analysis, as well as other antibody based fluorescent assays requiring extremely low background levels, absence of F(c) mediated binding, lot-to-lot consistency, high titer and specificity. The maximum amount of reagent required to stain 1 x 10 ⁶ cells in flow cytometry is approximately 1.0 µg of antibody conjugate. Lesser amounts of reagent may be sufficient for staining. Optimal titers for other applications should be determined by the researcher. As a general guideline dilutions of 1:100 to 1:250 should be suitable for most applications.
Assay Dilutions:	All assays should be optimized by the user. Recommended dilutions (if any) may be listed below.
FC:	1:100 - 1:250
IF:	1:100 - 1:200
IHC:	User Optimized
WB:	1:1,000

Formulation

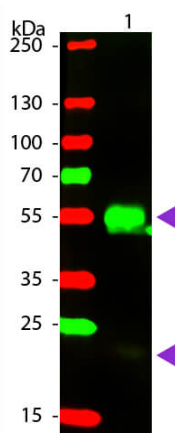
Physical State:	Lyophilized
Concentration:	0.5 mg/mL by absorbance = 82.0 at 565 nm
Buffer:	0.02 M Potassium Phosphate, 0.15 M Sodium Chloride, pH 7.2
Preservative:	0.01% (w/v) Sodium Azide
Stabilizer:	10 mg/mL Bovine Serum Albumin (BSA) - Immunoglobulin and Protease free

Reconstitution Volume:	1.0 mL
Reconstitution Buffer:	Restore with deionized water (or equivalent)

Shipping & Handling

Shipping Condition:	Ambient
Storage Condition:	Store vial at 4° C prior to restoration. Restore with deionized water (or equivalent). This product is stable at 4° C as an undiluted liquid. Dilute only prior to immediate use. Centrifuge product if not completely clear after standing at room temperature. Do not freeze after reconstitution. Store reagent in the dark. Use subdued lighting during handling and incubation of cells prior to analysis.
Expiration:	Expiration date is one (1) year from date of receipt.

Images



Western Blot

Western blot of Phycoerythrin conjugated Donkey F(ab')₂ Anti-Rabbit IgG Pre-Adsorbed secondary antibody. Lane 1: Rabbit IgG. Lane 2: None. Load: 50 ng per lane. Primary antibody: None. Secondary antibody: Phycoerythrin donkey secondary antibody at 1:1,000 for 60 min at RT. Blocking: MB-070 for 30 min at RT. Predicted/Observed size: 25 & 55 kDa, 25 & 55 kDa for Rabbit IgG. Other band(s): None.

Disclaimer

This product is for research use only and is not intended for therapeutic or diagnostic applications. Please contact a technical service representative for more information. All products of animal origin manufactured by Rockland Immunochemicals are derived from starting materials of North American origin. Collection was performed in United States Department of Agriculture (USDA) inspected facilities and all materials have been inspected and certified to be free of disease and suitable for exportation. All properties listed are typical characteristics and are not specifications. All suggestions and data are offered in good faith but without guarantee as conditions and methods of use of our products are beyond our control. All claims must be made within 30 days following the date of delivery. The prospective user must determine the suitability of our materials before adopting them on a commercial scale. Suggested uses of our products are not recommendations to use our products in violation of any patent or as a license under any patent of Rockland Immunochemicals, Inc. If you require a commercial license to use this material and do not have one, then return this material, unopened to: Rockland Inc., P.O. BOX 5199, Limerick, Pennsylvania, USA.