



# SZABO SCANDIC

Part of Europa Biosite

## Produktinformation



Forschungsprodukte & Biochemikalien



Zellkultur & Verbrauchsmaterial



Diagnostik & molekulare Diagnostik



Laborgeräte & Service

Weitere Information auf den folgenden Seiten!  
See the following pages for more information!



### Lieferung & Zahlungsart

siehe unsere [Liefer- und Versandbedingungen](#)

### Zuschläge

- Mindermengenzuschlag
- Trockeneiszuschlag
- Gefahrgutzuschlag
- Expressversand

### SZABO-SCANDIC HandelsgmbH

Quellenstraße 110, A-1100 Wien

T. +43(0)1 489 3961-0

F. +43(0)1 489 3961-7

[mail@szabo-scandic.com](mailto:mail@szabo-scandic.com)

[www.szabo-scandic.com](http://www.szabo-scandic.com)

[linkedin.com/company/szaboscandic](https://www.linkedin.com/company/szaboscandic) 

**Datasheet for 810-1102****Fab Mouse IgG (H&L) Antibody****Overview**

<b>Description:</b>	Goat Fab Anti-Mouse IgG (H&L) Antibody - 810-1102
<b>Item No.:</b>	810-1102
<b>Size:</b>	1 mg
<b>Applications:</b>	Dot Blot, ELISA, IHC
<b>Reactivity:</b>	Mouse
<b>Host Species:</b>	Goat

**Product Details**

<b>Background:</b>	Fab Anti-Mouse IgG (H&L) Antibody generated in goat detects Mouse IgG. This product possesses the F(ab) region possessing the epitope-recognition site, both heavy and light chains of the antibody molecule are present. Secondary Antibodies are available in a variety of formats and conjugate types. When choosing a secondary antibody product, consideration must be given to species and immunoglobulin specificity, conjugate type, fragment and chain specificity, level of cross-reactivity, and host-species source and fragment composition.
<b>Synonyms:</b>	Goat Fab Anti-Mouse IgG Antibody
<b>Host Species:</b>	Goat
<b>Specificity:</b>	IgG (H&L)
<b>Clonality:</b>	Polyclonal
<b>Format:</b>	IgG Fab

**Target Details**

<b>Reactivity:</b>	Mouse
<b>Immunogen Type:</b>	Native Protein
<b>Immunogen:</b>	Anti-Mouse IgG (H&L) antibody was produced by repeated immunization with mouse IgG whole molecule in goat.

<b>Purity/Specificity:</b>	This product was prepared from monospecific antiserum by immunoaffinity chromatography using Mouse IgG coupled to agarose beads followed by solid phase adsorption(s) to remove any unwanted reactivities, papain digestion and chromatographic separation. Assay by immunoelectrophoresis resulted in a single precipitin arc against anti-Goat Serum. No reaction was observed against anti-Papain or anti-Goat IgG F(c).
----------------------------	---

## Application Details

<b>Tested Applications:</b>	Dot Blot, ELISA
<b>Suggested Applications:</b>	IHC (Based on references)
<b>Application Note:</b>	Fab Anti-Mouse IgG has been tested by ELISA and dot blot and is suitable for highly specific immunological methods requiring extremely low background levels, lot-to-lot consistency, high titer and specificity. This secondary antibody anti-Mouse is ideal for investigators who routinely perform titration assays, western-blot, immunoprecipitation and more generally immunoassays.
<b>Assay Dilutions:</b>	All assays should be optimized by the user. Recommended dilutions (if any) may be listed below.
<b>ELISA:</b>	1:15,000
<b>IHC:</b>	1:1,000 - 1:5,000
<b>WB:</b>	1:2,000 - 1:10,000

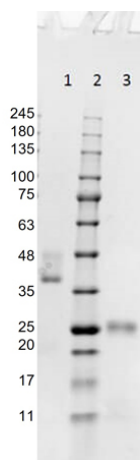
## Formulation

<b>Physical State:</b>	Liquid (sterile filtered)
<b>Concentration:</b>	1.0 by UV absorbance at 280 nm
<b>Buffer:</b>	0.02 M Potassium Phosphate, 0.15 M Sodium Chloride, pH 7.2
<b>Preservative:</b>	0.01% (w/v) Sodium Azide
<b>Stabilizer:</b>	None

## Shipping & Handling

<b>Shipping Condition:</b>	Wet Ice
<b>Storage Condition:</b>	Store vial at 4° C prior to opening. This product is stable at 4° C as an undiluted liquid. Dilute only prior to immediate use.
<b>Expiration:</b>	Expiration date is one (1) year from date of receipt.

## Images

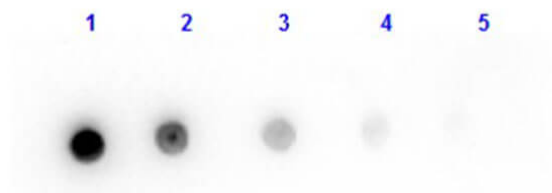


### SDS-PAGE

SDS-PAGE results of Goat Fab Anti-Mouse IgG (H&L) Antibody. Lane 1: Goat Fab Anti-Mouse - Non-reduced. Lane 2: Opal Prestained Ladder - (p/n MB-210-0500). Lane 3: Goat Fab Anti-Mouse - Reduced. Load: 1.0ug. Coomassie stained and imaged.

### Dot Blot

Dot Blot results of Goat Fab Anti-Mouse IgG Antibody. Dots are Mouse IgG at (1) 100ng, (2) 33.3ng, (3) 11.1ng, (4) 3.70ng, (5) 1.23ng. Blocking: MB-070 for 30 min at RT. Primary Antibody: Goat Fab Anti-Mouse IgG at 1μg/mL for 1hr at RT. Secondary Antibody: Donkey Anti-Goat IgG HRP at 1:40,000 for 30min at RT. Imaged with BioRad ChemiDoc, Chemi filter.



## References

- Dembla E et al. Biogenesis of large dense core vesicles in mouse chromaffin cells. *Traffic*. (2021)
- Mascadri F et al. Background-free Detection of Mouse Antibodies on Mouse Tissue by Anti-isotype Secondary Antibodies. *J Histochem Cytochem*. (2021)
- Shaib et al. Paralogues of the Calcium-Dependent Activator Protein for Secretion Differentially Regulate Synaptic Transmission and Peptide Secretion in Sensory Neurons. *Frontiers in Cellular Neuroscience* (2018)
- Pyrski M et al. Trpm5 expression in the olfactory epithelium. *Mol Cell Neurosci*. (2017)
- Lane-Donovan C et al. Reelin protects against amyloid  $\beta$  toxicity in vivo. *Science Signaling* (2015)
- Cippa PE et al. Synergistic Bcl-2 inhibition by ABT-737 and cyclosporine A. *Apoptosis*. (2013)

## Disclaimer

This product is for research use only and is not intended for therapeutic or diagnostic applications. Please contact a technical service representative for more information. All products of animal origin manufactured by Rockland Immunochemicals are derived from starting materials of North American origin. Collection was performed in United States Department of Agriculture (USDA) inspected facilities and all materials have been inspected and certified to be free of disease and suitable for exportation. All properties listed are typical characteristics and are not specifications. All suggestions and data are offered in good faith but without guarantee as conditions and methods of use of our products are beyond our control. All claims must be made within 30 days following the date of delivery. The prospective user must determine the suitability of our materials before adopting them on a commercial scale. Suggested uses of our products are not recommendations to use our products in violation of any patent or as a license under any patent of Rockland Immunochemicals, Inc. If you require a commercial license to use this material and do not have one, then return this material, unopened to: Rockland Inc., P.O. BOX 5199, Limerick, Pennsylvania, USA.