



SZABO SCANDIC

Part of Europa Biosite

Produktinformation



Forschungsprodukte & Biochemikalien



Zellkultur & Verbrauchsmaterial



Diagnostik & molekulare Diagnostik



Laborgeräte & Service

Weitere Information auf den folgenden Seiten!
See the following pages for more information!



Lieferung & Zahlungsart

siehe unsere [Liefer- und Versandbedingungen](#)

Zuschläge

- Mindermengenzuschlag
- Trockeneiszuschlag
- Gefahrgutzuschlag
- Expressversand

SZABO-SCANDIC HandelsgmbH

Quellenstraße 110, A-1100 Wien

T. +43(0)1 489 3961-0

F. +43(0)1 489 3961-7

mail@szabo-scandic.com

www.szabo-scandic.com

[linkedin.com/company/szaboscandic](https://www.linkedin.com/company/szaboscandic) 

Datasheet for 88-1688-31**Rabbit TrueBlot® Set (IP Agarose beads)****Overview**

| | |
|----------------------|---|
| Description: | Rabbit TrueBlot® Set (with IP Agarose beads) - 88-1688-31 |
| Item No.: | 88-1688-31 |
| Size: | 1 Set |
| Applications: | IP, WB |
| Reactivity: | Rabbit |

Product Details

| | |
|----------------------------|--|
| Background: | Rabbit IgG TrueBlot® is a unique horseradish peroxidase conjugated Anti-Rabbit IgG monoclonal secondary antibody. Rabbit IgG TrueBlot® enables detection of immunoblotted target protein bands, without hindrance by interfering immunoprecipitating immunoglobulin heavy and light chains. It is easy to generate publication-quality IP/Western Blot data with Rabbit IgG TrueBlot®, simply substitute the conventional HRP Anti-Rabbit IgG blotting reagent with Rabbit IgG TrueBlot® and follow the prescribed protocol for sample preparation and immunoblotting. Rabbit IgG TrueBlot® is ideal for use in protocols involving immunoblotting of immunoprecipitated proteins. TrueBlot preferentially detects the non-reduced form of rabbit IgG over the reduced, SDS-denatured form of IgG. When the immunoprecipitate is fully reduced immediately prior to SDS-gel electrophoresis, reactivity of Rabbit IgG TrueBlot® with the 55 kDa heavy chains and the 23 kDa light chains of the immunoprecipitating antibody is minimized thereby eliminating interference by the heavy and light chains of the immunoprecipitating antibody in IP/Western blot applications. Applications include studies examining post-translational modification (e.g., phosphorylation or acetylation) or protein-protein interactions. Rabbit IgG TrueBlot may also be used for detection in immunoblotting assays that do not employ immunoprecipitation. |
| Synonyms: | Anti-Rabbit Immunoglobulin Gamma, Agarose-conjugated IgG, Gt-a-Rb IgG, Goat-anti-Rabbit IgG, TrueBlot for immunoprecipitation, IP Agarose beads for TrueBlot, HRP, HRP TrueBlot ULTRA, Peroxidase TrueBlot, TrueBlot for IP/WB, TrueBlot for western blotting |
| Conjugate: | Peroxidase (HRP) ULTRA |
| Clonality: | Monoclonal |
| Clone ID: | eB182 |
| Format: | IgG |
| Detection Kit Type: | Immunoprecipitation Kit |

Target Details

| | |
|----------------------------|--|
| Reactivity: | Rabbit |
| Purity/Specificity: | Rabbit TrueBlot® Antibody Peroxidase Conjugate was prepared from tissue culture supernatant by Protein G affinity chromatography. Assay by Immunoelectrophoresis resulted in a single precipitin arc against Anti-Rabbit Serum. Reactivity is observed against native Rabbit IgG by both Western blot and ELISA. |
| Relevant Links: | <ul style="list-style-type: none">Rabbit IgG TrueBlot IP Set Protocol |

Application Details

| | |
|-----------------------------|--|
| Tested Applications: | IP, WB |
| Application Note: | <p>Rabbit IgG TrueBlot® is provided as 1000X solution. To conserve reagent, we recommend incubating the blots from minigels in sealed bags (removing as much air as possible) with minimal volume (2-3 mLs). If used conservatively at 2.5mLs/blot will yield enough reagent for 20 blots. Note that there are three key procedural considerations: 1. Protein A or G should not be used for the immunoprecipitation. Use of protein A or G beads with the rabbit TrueBlot will result in contaminating bands. For immunoprecipitation, Anti-Rat IgG beads, or Anti-Rabbit IgG beads should be used for rat or rabbit immunoprecipitating antibodies, respectively. 2. Immunoprecipitate should be completely reduced. 3. BLOTTO/Milk should be used as the blocking protein for the immunoblot. Rabbit TrueBlot Set Components: 1. Rabbit IgG TrueBlot® HRP-conjugated monoclonal secondary antibody reacting with rabbit IgGs for optimal signal detection in immunoprecipitation/immunoblot experiments. 2. Anti-Rabbit Ig IP Beads: 2.5 mL. Binds 1 mg Ig/mL beads. 3. Western blot incubation tray. Special Notes: Upon initial use of the IP beads, we recommend that the vial be inverted several times to get the beads into suspension. We recommend using a large bore pipet to pipet up the liquid for use. For storage of the opened vial of beads, we recommend that the vial cap be sealed with parafilm to help prevent evaporation of the buffer. All recommended dilutions for listed applications are intended as an initial recommendation, specific conditions for each protein and antibody combination should be specifically optimized by the end user.</p> |
| Assay Dilutions: | All assays should be optimized by the user. Recommended dilutions (if any) may be listed below. |
| IP: | TrueBlot anti-Rabbit Ig IP Beads (binds 2.5 mg Ig/mL beads) have been reported for use in IP |
| WB: | 1:1000 |

Formulation

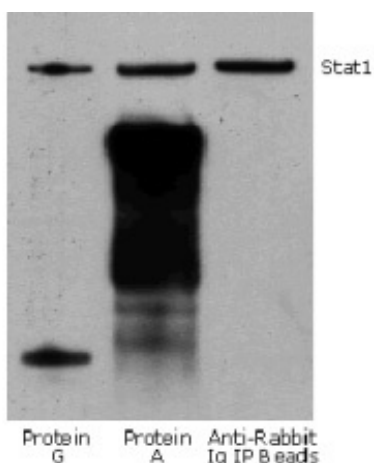
| | |
|------------------------|---------------------------|
| Physical State: | Liquid (sterile filtered) |
|------------------------|---------------------------|

| | |
|-----------------------|--|
| Concentration: | n/a |
| Buffer: | 0.01 M Sodium Phosphate, 0.15 M Sodium Chloride, pH 7.2 |
| Stabilizer: | 0.1 mg/ml Bovine Serum Albumin (BSA) - IgG and Protease free, 50% (v/v) Glycerol |

Shipping & Handling

| | |
|----------------------------|--|
| Shipping Condition: | Wet Ice |
| Storage Condition: | Store TrueBlot® Anti-Rabbit Ig IP beads (00-8800-25) at 2-8 °C and Rabbit TrueBlot® (18-8816-31) at -20 °C. This product is guaranteed for 6 months upon receipt, when handled and stored as instructed. |
| Expiration: | Expiration date is six (6) months from date of receipt. |

Images



Western Blot

Rabbit TrueBlot® IP / Western Blot: Jurkat cell lysate (0.5 ml of 1x10⁷ cells/ml) was incubated with rabbit anti-human Stat1 and immunoprecipitated using Protein G, Protein A and Anti-Rabbit Ig IP Beads. Precipitate from 5x10⁵ cells was subjected to electrophoresis, transferred to a PVDF membrane, and Western blotted with anti-Stat1 using Rabbit TrueBlot®: Anti-Rabbit IgG HRP

References

- Lei Y et al. Cooperative sensing of mitochondrial DNA by ZBP1 and cGAS promotes cardiotoxicity. *Cell*. (2023)
- Lei Y et al. ZBP1 sequesters cGAS in the cytoplasm and sustains type I interferon responses to mitochondrial DNA. *bioRxiv Preprint* (2022)
- Lee SJ et al. Identification of Nucleolin as a Novel AEG-1-Interacting Protein in Breast Cancer via Interactome Profiling. *Cancers (Basel)*. (2021)
- Goossens S et al. Oncogenic ZEB2 activation drives sensitivity toward KDM1A inhibition in T-cell acute lymphoblastic leukemia. *Blood*. (2017)
- Braun A et al. High-resolution time-lapse imaging and automated analysis of microtubule dynamics in living human umbilical vein endothelial cells. *J Vis Exp*. (2016)
- Schnöder et al. Epo-induced erythroid maturation is dependent on Plcy1 signaling. *Cell Death & Differentiation* (2015)
- Dusonchet J et al. A Parkinson's disease gene regulatory network identifies the signaling protein RGS2 as a modulator of LRRK2 activity and neuronal toxicity. *Hum Mol Genet*. (2014)
- An CI et al. Trip12, a HECT domain E3 ubiquitin ligase, targets Sox6 for proteasomal degradation and affects fiber type-specific gene expression in muscle cells. *Skeletal Muscle* (2013)

Disclaimer

This product is for research use only and is not intended for therapeutic or diagnostic applications. Please contact a technical service representative for more information. All products of animal origin manufactured by Rockland Immunochemicals are derived from starting materials of North American origin. Collection was performed in United States Department of Agriculture (USDA) inspected facilities and all materials have been inspected and certified to be free of disease and suitable for exportation. All properties listed are typical characteristics and are not specifications. All suggestions and data are offered in good faith but without guarantee as conditions and methods of use of our products are beyond our control. All claims must be made within 30 days following the date of delivery. The prospective user must determine the suitability of our materials before adopting them on a commercial scale. Suggested uses of our products are not recommendations to use our products in violation of any patent or as a license under any patent of Rockland Immunochemicals, Inc. If you require a commercial license to use this material and do not have one, then return this material, unopened to: Rockland Inc., P.O. BOX 5199, Limerick, Pennsylvania, USA.