



SZABO SCANDIC

Part of Europa Biosite

Produktinformation



Forschungsprodukte & Biochemikalien



Zellkultur & Verbrauchsmaterial



Diagnostik & molekulare Diagnostik



Laborgeräte & Service

Weitere Information auf den folgenden Seiten!
See the following pages for more information!



Lieferung & Zahlungsart

siehe unsere [Liefer- und Versandbedingungen](#)

Zuschläge

- Mindermengenzuschlag
- Trockeneiszuschlag
- Gefahrgutzuschlag
- Expressversand

SZABO-SCANDIC HandelsgmbH

Quellenstraße 110, A-1100 Wien

T. +43(0)1 489 3961-0

F. +43(0)1 489 3961-7

mail@szabo-scandic.com

www.szabo-scandic.com

[linkedin.com/company/szaboscandic](https://www.linkedin.com/company/szaboscandic)



Datasheet for 88-8886-31**Rabbit TrueBlot® Western Blot Kit****Overview**

Description:	Rabbit TrueBlot® Western Blot Kit - 88-8886-31
Item No.:	88-8886-31
Size:	1 Kit
Applications:	IP, WB
Reactivity:	Rabbit
Host Species:	Mouse

Product Details

Background:	<p>The Rabbit TrueBlot® Western Blot Kit contains the critical supporting reagents, buffers, and substrates for immunoprecipitation and Western blotting of samples using TrueBlot monoclonal secondary antibody in conjunction with your own primary IP antibody and primary (Rabbit IgG) Western blotting antibody (see application note for kit components). Rabbit IgG TrueBlot® is the unique horseradish peroxidase conjugated Anti-Rabbit IgG monoclonal secondary antibody which enables detection of immunoblotted target protein bands, without hindrance by interfering immunoglobulin heavy and light chains from your IP antibody. Use it in place of your conventional HRP Anti-Rabbit IgG immunoblotting secondary antibody. It is easy to generate publication-quality IP/WB data with Rabbit IgG TrueBlot®. Rabbit IgG TrueBlot is ideal for use in protocols involving immunoblotting of immunoprecipitated proteins. TrueBlot preferentially detects the non-reduced form of rabbit IgG over the reduced, SDS-denatured form of IgG. When the immunoprecipitate is fully reduced immediately prior to SDS-gel electrophoresis, reactivity of Rabbit IgG TrueBlot with the 55 kDa heavy chains and the 23 kDa light chains of the immunoprecipitating antibody is minimized thereby eliminating interference by the heavy and light chains of the immunoprecipitating antibody in IP/immunoblot applications. Applications include studies examining post-translational modification (e.g., phosphorylation or acetylation) or protein-protein interactions. Rabbit IgG TrueBlot may also be used for detection in immunoblotting assays that do not employ immunoprecipitation.</p>
Synonyms:	Anti-Rabbit IgG HRP, TrueBlot, HRP TrueBlot ULTRA, Peroxidase TrueBlot, TrueBlot for IP/WB, TrueBlot for immunoprecipitation, TrueBlot for western blotting, TrueBlot for chemiluminescent western blotting
Host Species:	Mouse
Conjugate:	Peroxidase (HRP) ULTRA

Clonality:	Monoclonal
Clone ID:	eB182
Format:	IgG
Detection Kit Type:	Immunoprecipitation Kit

Target Details

Reactivity:	Rabbit
Purity/Specificity:	Rabbit TrueBlot® Antibody Peroxidase Conjugate was prepared from tissue culture supernatant by Protein G affinity chromatography. Assay by Immunoelectrophoresis resulted in a single precipitin arc against Anti-Goat Serum. Reactivity is observed against native Rabbit IgG by both Western blot and ELISA.
Relevant Links:	<ul style="list-style-type: none"> Rabbit IgG TrueBlot IP Western Blot Protocol

Application Details

Tested Applications:	IP, WB
Application Note:	<p>Rabbit IgG TrueBlot® is provided as 1000X solution. To conserve reagent, we recommend incubating the blots from minigels in sealed bags (removing as much air as possible) with minimal volume (2-3 mLs). If used conservatively at 2.5mls/blot will yield enough reagent for 20 blots. Rabbit IgG TrueBlot® HRP-conjugated monoclonal secondary antibody reacting with goat IgGs for optimal signal detection in immunoprecipitation/immunoblotting experiments. All recommended dilutions for listed applications are intended as an initial recommendation, specific conditions for each protein and antibody combination should be specifically optimized by the end user. Note that there are three key procedural considerations: 1. Protein A or G should not be used for the immunoprecipitation. Use of protein A or G beads with the rabbit TrueBlot will result in contaminating bands. For immunoprecipitation, Anti-Rat IgG beads, or Anti-Rabbit IgG beads should be used for rat or rabbit immunoprecipitating antibodies, respectively. 2. Immunoprecipitate should be completely reduced. 3. BLOTTO/Milk should be used as the blocking protein for the immunoblot. A sample of Anti-Alpha-Tubulin (MOUSE) Monoclonal Antibody Cat #(200-301-880S), has been provided to be used as a loading control at the user's discretion. Dilutions are to be optimized by the user. Rabbit TrueBlot Western Blot Kit Components: 1. Rabbit IgG TrueBlot: 50 µL. 18-8816-31; 2. TrueBlot Enhancer Solution: 25 mL; 3. TrueBlot Blocker: 10 g; 4. TrueBlot Assay Buffer: 30 mL, 20X; 5. TrueBlot Substrate A: 12.5 mL; 6. TrueBlot Substrate B: 12.5 mL; 7. Western Blot Incubation Tray. 8. Anti-Alpha-Tubulin (MOUSE) Monoclonal Antibody - 200-301-880S.</p>
Assay Dilutions:	All assays should be optimized by the user. Recommended dilutions (if any) may be listed below.
IP:	Use with TrueBlot® Anti-Rabbit Ig IP Beads Cat #(00-8800-25)

WB: 1:1000

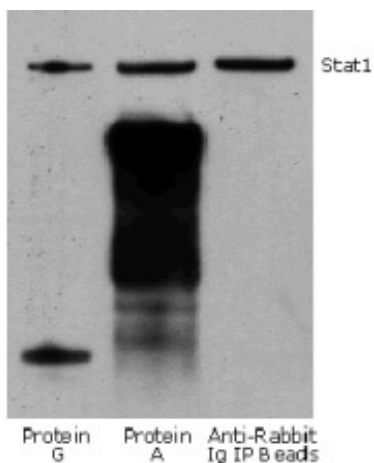
Formulation

Physical State:	Liquid (sterile filtered)
Buffer:	0.01 M Sodium Phosphate, 0.15 M Sodium Chloride, pH 7.2
Stabilizer:	0.1 mg/ml Bovine Serum Albumin (BSA) - IgG and Protease free, 50% (v/v) Glycerol

Shipping & Handling

Shipping Condition:	Wet Ice
Storage Condition:	Store Kit at 2-8 °C, except Rabbit TrueBlot® which should be stored at -20 °C. This product is guaranteed for 6 months upon receipt, when handled and stored as instructed.
Expiration:	Expiration date is six (6) months from date of receipt.

Images



Western Blot

Rabbit TrueBlot® IP / Western Blot: Jurkat cell lysate (0.5 ml of 1×10^7 cells/ml) was incubated with rabbit anti-human Stat1 and immunoprecipitated using Protein G, Protein A and Anti-Rabbit Ig IP Beads. Precipitate from 5×10^5 cells was subjected to electrophoresis, transferred to a PVDF membrane, and Western blotted with anti-Stat1 using Rabbit TrueBlot®: Anti-Rabbit IgG HRP

**Kit Box**

Rockland produces kits to meet the requirements of researchers for highly sensitive antibody based assays.

Western Blot Kit Components: 1. IgG TrueBlot: 50 μ L. 2. TrueBlot Enhancer Solution: 25 mL; 3. TrueBlot Blocker: 10 g; 4. TrueBlot Assay Buffer: 30 mL, 20X; 5. TrueBlot Substrate A: 12.5 mL; 6. TrueBlot Substrate B: 12.5 mL; 7. Western Blot Incubation Tray. 8. Anti-Alpha-Tubulin (MOUSE) Monoclonal Antibody - 200-301-880S.

References

- Bettert RK et al. Characterization of the Tau Interactome in Human Brain Reveals Isoform-Dependent Interaction with 14-3-3 Family Proteins. *eNeuro*. (2023)
- Msaouel P et al. Comprehensive molecular characterization identifies distinct genomic and immune hallmarks of renal medullary carcinoma. *Cancer Cell*. (2020)

Disclaimer

This product is for research use only and is not intended for therapeutic or diagnostic applications. Please contact a technical service representative for more information. All products of animal origin manufactured by Rockland Immunochemicals are derived from starting materials of North American origin. Collection was performed in United States Department of Agriculture (USDA) inspected facilities and all materials have been inspected and certified to be free of disease and suitable for exportation. All properties listed are typical characteristics and are not specifications. All suggestions and data are offered in good faith but without guarantee as conditions and methods of use of our products are beyond our control. All claims must be made within 30 days following the date of delivery. The prospective user must determine the suitability of our materials before adopting them on a commercial scale. Suggested uses of our products are not recommendations to use our products in violation of any patent or as a license under any patent of Rockland Immunochemicals, Inc. If you require a commercial license to use this material and do not have one, then return this material, unopened to: Rockland Inc., P.O. BOX 5199, Limerick, Pennsylvania, USA.