



SZABO SCANDIC

Part of Europa Biosite

Produktinformation



Forschungsprodukte & Biochemikalien



Zellkultur & Verbrauchsmaterial



Diagnostik & molekulare Diagnostik



Laborgeräte & Service

Weitere Information auf den folgenden Seiten!
See the following pages for more information!



Lieferung & Zahlungsart

siehe unsere [Liefer- und Versandbedingungen](#)

Zuschläge

- Mindermengenzuschlag
- Trockeneiszuschlag
- Gefahrgutzuschlag
- Expressversand

SZABO-SCANDIC Handels GmbH

Quellenstraße 110, A-1100 Wien

T. +43(0)1 489 3961-0

F. +43(0)1 489 3961-7

mail@szabo-scandic.com

www.szabo-scandic.com

[linkedin.com/company/szaboscandic](https://www.linkedin.com/company/szaboscandic) 

Datasheet for 88-8887-215

TrueBlot® Immunoprecipitation and Western Blot Kit for GFP Epitope Tag

Overview

| | |
|----------------------|--|
| Description: | TrueBlot® Immunoprecipitation and Western Blot Kit for GFP Epitope Tag - 88-8887-215 |
| Item No.: | 88-8887-215 |
| Size: | 1 Kit |
| Applications: | IP, WB |
| Reactivity: | GFP, Mouse, rGFP |

Product Details

| | |
|--------------------|--|
| Background: | TrueBlot® Immunoprecipitation and Western Blot Kit for GFP Epitope Tag allows for the immunoprecipitation and detection of GFP-tagged recombinant proteins present in cell lysates provided by the user. After protein separation by SDS-PAGE and transfer, the membrane is probed with monoclonal Anti-GFP. Detection of the membrane bound antibody-antigen complex is achieved by the addition of Mouse IgG TrueBlot® ULTRA HRP. The TrueBlot® Immunoprecipitation and Western Blot Kit for GFP Epitope Tag contains the critical supporting reagents, buffers, and substrates for immunoprecipitation and western blot containing a GFP Epitope Tag using TrueBlot secondary antibody immunoblotting reagents in conjunction with Rockland's Anti-GFP (MOUSE) Monoclonal Antibody. Mouse IgG TrueBlot® ULTRA is the unique horseradish peroxidase conjugated Anti-Mouse IgG monoclonal secondary antibody which enables detection of immunoblotted target protein bands, without hindrance from interfering immunoglobulin heavy and light chains from your IP antibody. Use it in place of your conventional HRP Anti-Mouse IgG secondary antibody. It is easy to generate publication-quality IP/WB data with Mouse IgG TrueBlot® ULTRA. |
| Synonyms: | HRP, TrueBlot, HRP TrueBlot ULTRA, Peroxidase TrueBlot, TrueBlot for IP/WB, TrueBlot for immunoprecipitation, TrueBlot for western blotting, GFP Western Blot, Western Blotting Kit, Chemiluminescent GFP Kit, Immunoblotting Kit, GFP, HRP Anti GFP, Green Fluorescent Protein, GFP, IP |
| Conjugate: | Peroxidase (HRP) ULTRA |
| Clonality: | Monoclonal |
| Clone ID: | 9F9.F9 |
| Format: | IgG |

Detection Kit Type: Immunoprecipitation Kit

Target Details

Reactivity: GFP, Mouse, rGFP

Purity/Specificity: This TrueBlot® Immunoprecipitation and Western Blot Kit for GFP Epitope Tag allows for the detection of GFP-tagged recombinant protein present in cell lysates provided by the user. Mouse TrueBlot® ULTRA Antibody Peroxidase Conjugate was prepared from tissue culture supernatant by Protein G affinity chromatography. Assay by Immunoelectrophoresis resulted in a single precipitin arc against Anti-Mouse Serum. Reactivity is observed against native Mouse IgG by both Western blot and ELISA.

Relevant Links: • [GFP TrueBlot Protocol](#)

Application Details

Tested Applications: IP, WB

Application Note: Mouse IgG TrueBlot® ULTRA is provided as 1000X solution. To conserve reagent, we recommend incubating the blots from minigels in sealed bags (removing as much air as possible) with minimal volume (2-3 mLs). Mouse IgG TrueBlot® ULTRA is an HRP-conjugated monoclonal secondary antibody reacting with mouse IgGs for optimal signal detection in immunoprecipitation/immunoblotting experiments. All recommended dilutions for listed applications are intended as an initial recommendation, specific conditions for each protein and antibody combination should be specifically optimized by the end user. Note that there are three key procedural considerations: 1. Protein A or G beads may be used with the mouse, goat and sheep TrueBlot secondaries, but not with the rabbit TrueBlot secondary. Use of protein A or G beads with the rabbit TrueBlot will result in contaminating bands. 2. Immunoprecipitate should be completely reduced. 3. BLOTTO/Milk should be used as the blocking protein for the immunoblot. TrueBlot® IP and WB Kit for GFP Epitope Components: 1. Mouse IgG TrueBlot ULTRA: 50 µL 18-8817-31; 2. TrueBlot Enhancer Solution: 25 mL; 3. TrueBlot Blocker: 10 g; 4. TrueBlot Assay Buffer: 30 mL 20X; 5. TrueBlot Substrate A: 12.5 mL; 6. TrueBlot Substrate B: 12.5 mL; 7. Anti-Mouse Ig IP Beads: 2.5 mL Binds 0.4 mg Ig/mL beads; 8. Anti-GFP (MOUSE) Monoclonal Antibody: 100 µg; 9. Western Blot Incubation Tray. Special Notes: Upon initial use of the IP beads, we recommend that the vial be inverted several times to get the beads into suspension. We recommend using a large bore pipet to pipet up the liquid for use. For storage of the opened vial of beads, we recommend that the vial cap be sealed with parafilm to help prevent evaporation of the buffer.

Assay Dilutions: All assays should be optimized by the user. Recommended dilutions (if any) may be listed below.

IP: 1-10 µg / 10⁷ cells/1 mL lysate

WB: 1:1000

Formulation

| | |
|------------------------|--|
| Physical State: | Liquid (sterile filtered) |
| Buffer: | 0.01 M Sodium Phosphate, 0.15 M Sodium Chloride, pH 7.2 |
| Preservative: | Wash buffers MUST NOT contain SODIUM AZIDE or other inhibitors of peroxidase activity! |
| Stabilizer: | 0.1 mg/ml Bovine Serum Albumin (BSA) - IgG and Protease free, 50% (v/v) Glycerol |

Shipping & Handling

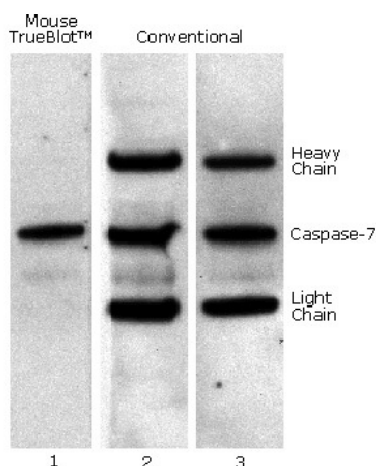
| | |
|----------------------------|--|
| Shipping Condition: | Wet Ice |
| Storage Condition: | Store Kit at 2-8 °C, except Mouse TrueBlot® ULTRA and Anti-GFP (MOUSE) Monoclonal Antibody, which should be stored at -20 °C. This product is guaranteed for 6 months upon receipt, when handled and stored as instructed. |
| Expiration: | Expiration date is six (6) months from date of receipt. |

Images



Kit Box

This product is assembled as a kit. See attached protocol or CofA for further details.

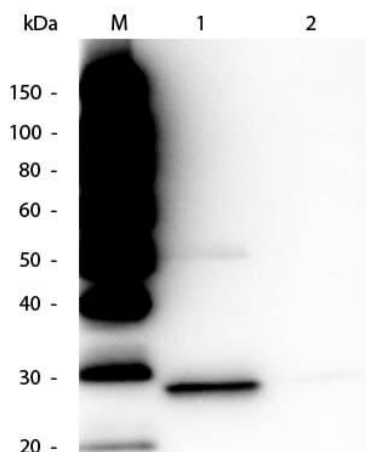


Western Blot

Mouse TrueBlot® IP / Western Blot: Caspase 7 was immunoprecipitated from 0.5 ml of 1×10^7 Jurkat cells/ml with 5 ug mouse anti-human Caspase 7. Precipitate from 1×10^6 cells was subjected to electrophoresis, transferred to an PVDF membrane, and Western blotted with anti-Caspase 7 using Mouse TrueBlot® ULTRA: Anti-Mouse Ig HRP (Lane 1) or conventional HRP-conjugated anti-mouse antibody (Lane 2) - note the detection of the heavy and light chains of the immunoprecipitating antibody in Lane 2 but not in Lane 1. When Lane 1 is re-immunoblotted using conventional HRP-conjugated anti-mouse polyclonal antibody (Lane 3), the heavy and light chains are now detected, confirming that although the immunoprecipitating heavy and light chains are present, Mouse TrueBlot® ULTRA: Anti-Mouse Ig HRP detects only native antibody and not denatured heavy and light chains.

Immunoprecipitation

Immunoprecipitation of recombinant GFP. 500 ug of HeLa Whole Cell Lysate (p/n W09-000-364) spiked with 1 ug of recombinant GFP was immunoprecipitated with 2 ug of Mouse anti-GFP Monoclonal Antibody (p/n 600-301-215) overnight at 4°C. Western Blotting of Immunoprecipitation product followed. Lane 1 - recombinant GFP Immunoprecipitation. Lane 2 - recombinant GFP Pre-Cleared Lysate (prior to immunoprecipitation). Load: 2 uL per lane. Primary Antibody: Mouse anti-GFP Monoclonal Antibody at 1:1,000 o/n at 4°C. Secondary Antibody: Mouse Trueblot® ULTRA: Anti-Mouse Ig HRP at 1:2,000 for 1 HR at RT. Block: MB-070 for 2 HR at RT. Predicted/Observed size: 28 kDa, 28 kDa for recombinant GFP.



Western Blot

Western Blot of Mouse anti-GFP antibody. Lane 1: Molecular Weight Markers. Lane 2: GFP. Load: 10ng per lane. Primary antibody: Ms Anti-GFP antibody at 1:1000 for overnight at 4°C. Secondary antibody: Mouse HRP secondary antibody at 1:40,000 for 30 min at RT. Block: 5% BLOTTO overnight at 4°C. Predicted/Observed size: 27 kDa, 27 kDa for epitope tag GFP. Other band(s): None.



Disclaimer

This product is for research use only and is not intended for therapeutic or diagnostic applications. Please contact a technical service representative for more information. All products of animal origin manufactured by Rockland Immunochemicals are derived from starting materials of North American origin. Collection was performed in United States Department of Agriculture (USDA) inspected facilities and all materials have been inspected and certified to be free of disease and suitable for exportation. All properties listed are typical characteristics and are not specifications. All suggestions and data are offered in good faith but without guarantee as conditions and methods of use of our products are beyond our control. All claims must be made within 30 days following the date of delivery. The prospective user must determine the suitability of our materials before adopting them on a commercial scale. Suggested uses of our products are not recommendations to use our products in violation of any patent or as a license under any patent of Rockland Immunochemicals, Inc. If you require a commercial license to use this material and do not have one, then return this material, unopened to: Rockland Inc., P.O. BOX 5199, Limerick, Pennsylvania, USA.