



SZABO SCANDIC

Part of Europa Biosite

Produktinformation



Forschungsprodukte & Biochemikalien



Zellkultur & Verbrauchsmaterial



Diagnostik & molekulare Diagnostik



Laborgeräte & Service

Weitere Information auf den folgenden Seiten!
See the following pages for more information!



Lieferung & Zahlungsart

siehe unsere [Liefer- und Versandbedingungen](#)

Zuschläge

- Mindermengenzuschlag
- Trockeneiszuschlag
- Gefahrgutzuschlag
- Expressversand

SZABO-SCANDIC HandelsgmbH

Quellenstraße 110, A-1100 Wien

T. +43(0)1 489 3961-0

F. +43(0)1 489 3961-7

mail@szabo-scandic.com

www.szabo-scandic.com

[linkedin.com/company/szaboscandic](https://www.linkedin.com/company/szaboscandic) 

Datasheet for 88-8887-31**Mouse TrueBlot® Western Blot Kit****Overview**

Description:	Mouse TrueBlot® Western Blot Kit - 88-8887-31
Item No.:	88-8887-31
Size:	1 Kit
Applications:	IP, WB
Reactivity:	Mouse
Host Species:	Rat

Product Details

Background:	<p>The Mouse TrueBlot® Western Blot Kit contains the critical supporting reagents, buffers, and substrates for immunoprecipitation and Western blotting of samples using TrueBlot monoclonal secondary antibody in conjunction with your own primary IP antibody and primary (Mouse IgG) Western blotting antibody (see application note for kit components). Mouse IgG TrueBlot® ULTRA is the unique horseradish peroxidase conjugated Anti-Mouse IgG monoclonal secondary antibody which enables detection of immunoblotted target protein bands, without hindrance by interfering immunoglobulin heavy and light chains from your IP antibody. Use it in place of your conventional HRP Anti-Mouse IgG immunoblotting secondary antibody. It is easy to generate publication-quality IP/WB data with Mouse IgG TrueBlot® ULTRA. TrueBlot technology enables unhindered detection of protein bands of interest which would otherwise be obscured by the presence of reduced and denatured heavy and light chain immunoglobulin in the blot (as detected by the conventional immunoblotting HRP anti-mouse IgG reagent). Mouse IgG TrueBlot ULTRA is ideal for use in protocols involving immunoblotting of immunoprecipitated proteins. TrueBlot preferentially detects the non-reduced form of mouse IgG over the reduced, SDS-denatured form of IgG. When the immunoprecipitate is fully reduced immediately prior to SDS-gel electrophoresis, reactivity of Mouse IgG TrueBlot ULTRA with the 55 kDa heavy chains and the 23 kDa light chains of the immunoprecipitating antibody is minimized thereby eliminating interference by the heavy and light chains of the immunoprecipitating antibody in IP/immunoblot applications. Applications include studies examining post-translational modification (e.g., phosphorylation or acetylation) or protein-protein interactions.</p>
Synonyms:	Anti-Mouse IgG HRP, TrueBlot, HRP TrueBlot ULTRA, Anti-Mouse IgG Peroxidase TrueBlot, TrueBlot for IP/WB, TrueBlot for immunoprecipitation, TrueBlot for western blotting, TrueBlot for chemiluminescent western blotting
Host Species:	Rat

Conjugate:	Peroxidase (HRP) ULTRA
Clonality:	Monoclonal
Clone ID:	eB144
Format:	IgG
Detection Kit Type:	Immunoprecipitation Kit

Target Details

Reactivity:	Mouse
Purity/Specificity:	Mouse TrueBlot® ULTRA Antibody Peroxidase Conjugate was prepared from tissue culture supernatant by Protein G affinity chromatography. Assay by Immunoelectrophoresis resulted in a single precipitin arc against Anti-Mouse Serum. Reactivity is observed against native Mouse IgG by both Western blot and ELISA.
Relevant Links:	<ul style="list-style-type: none">Mouse IgG TrueBlot / IP Western Blot Protocol

Application Details

Tested Applications:	IP, WB
Application Note:	<p>Mouse IgG TrueBlot® ULTRA is provided as 1000X solution. To achieve best results when detecting mouse IgG1 subtypes, we recommend performing a dot blot or titration to determine the optimal dilution factor for your desired application. All recommended dilutions for listed applications are intended as an initial recommendation, specific conditions for each protein and antibody combination should be specifically optimized by the end user. To conserve reagent, we recommend incubating the blots from minigels in sealed bags (removing as much air as possible) with minimal volume (2-3 mLs). If used conservatively at 2.5mls/blot will yield enough reagent for 20 blots. Mouse IgG TrueBlot® ULTRA HRP-conjugated secondary antibody reacting with mouse IgGs for optimal signal detection in immunoprecipitation/immunoblotting experiments. Note that there are three key procedural considerations: 1. Protein A or G beads may be used with the mouse, goat and sheep TrueBlot secondaries, but not with the rabbit TrueBlot secondary. Use of protein A or G beads with the rabbit TrueBlot will result in contaminating bands. 2. Immunoprecipitate should be completely reduced. 3. BLOTTO/Milk should be used as the blocking protein for the immunoblot. A sample of Anti-Alpha-Tubulin (MOUSE) Monoclonal Antibody Cat # (200-301-880S), has been provided to be used as a loading control at the user's discretion. Dilutions are to be optimized by the user. Mouse TrueBlot® Western Blot Kit Components: 1. Mouse IgG TrueBlot ULTRA: 50 µL 18-8817-31, 2. TrueBlot Enhancer Solution: 25 mL; 3. TrueBlot Blocker: 10 g; 4. TrueBlot Assay Buffer: 30 mL, 20X; 5. TrueBlot Substrate A: 12.5 mL; 6. TrueBlot Substrate B: 12.5 mL; 7. Western Blot Incubation Tray. 8. Anti-Alpha-Tubulin (MOUSE) Monoclonal Antibody - 200-301-880S.</p>

Assay Dilutions:	All assays should be optimized by the user. Recommended dilutions (if any) may be listed below.
IP:	Use with TrueBlot® Anti-Mouse Ig IP Beads Cat # (00-8811-25)
WB:	1:1000

Formulation

Physical State:	Liquid (sterile filtered)
Concentration:	n/a
Buffer:	0.01 M Sodium Phosphate, 0.15 M Sodium Chloride, pH 7.2
Stabilizer:	0.1 mg/ml Bovine Serum Albumin (BSA) - IgG and Protease free, 50% (v/v) Glycerol

Shipping & Handling

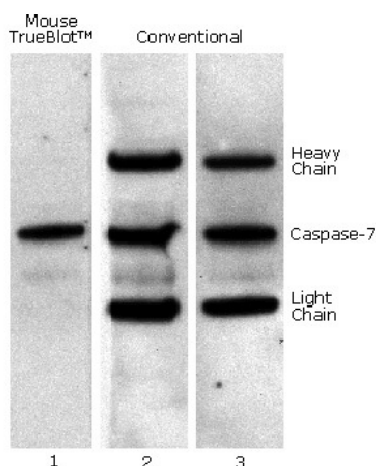
Shipping Condition:	Wet Ice
Storage Condition:	Store Kit at 2-8 °C, except Mouse TrueBlot® ULTRA which should be stored at -20 °C. This product is guaranteed for 6 months upon receipt, when handled and stored as instructed.
Expiration:	Expiration date is six (6) months from date of receipt.

Images



Kit Box

Rockland produces kits to meet the requirements of researchers for highly sensitive antibody based assays. Western Blot Kit Components: 1. IgG TrueBlot: 50 µL. 2. TrueBlot Enhancer Solution: 25 mL; 3. TrueBlot Blocker: 10 g; 4. TrueBlot Assay Buffer: 30 mL, 20X; 5. TrueBlot Substrate A: 12.5 mL; 6. TrueBlot Substrate B: 12.5 mL; 7. Western Blot Incubation Tray. 8. Anti-Alpha-Tubulin (MOUSE) Monoclonal Antibody - 200-301-880S.



Western Blot

Mouse TrueBlot® IP / Western Blot: Caspase 7 was immunoprecipitated from 0.5 ml of 1x10⁷ Jurkat cells/ml with 5 ug mouse anti-human Caspase 7. Precipitate from 1x10⁶ cells was subjected to electrophoresis, transferred to a PVDF membrane, and Western blotted with anti-Caspase 7 using Mouse TrueBlot® ULTRA: Anti-Mouse Ig HRP (Lane 1) or conventional HRP-conjugated anti-mouse antibody (Lane 2) - note the detection of the heavy and light chains of the immunoprecipitating antibody in Lane 2 but not in Lane 1. When Lane 1 is re-immunoblotted using conventional HRP-conjugated anti-mouse polyclonal antibody (Lane 3), the heavy and light chains are now detected, confirming that although the immunoprecipitating heavy and light chains are present, Mouse TrueBlot® ULTRA: Anti-Mouse Ig HRP detects only native antibody and not denatured heavy and light chains.

References

- Better RK et al. Characterization of the Tau Interactome in Human Brain Reveals Isoform-Dependent Interaction with 14-3-3 Family Proteins. *eNeuro*. (2023)
- Msaouel P et al. Comprehensive molecular characterization identifies distinct genomic and immune hallmarks of renal medullary carcinoma. *Cancer Cell*. (2020)

Disclaimer

This product is for research use only and is not intended for therapeutic or diagnostic applications. Please contact a technical service representative for more information. All products of animal origin manufactured by Rockland Immunochemicals are derived from starting materials of North American origin. Collection was performed in United States Department of Agriculture (USDA) inspected facilities and all materials have been inspected and certified to be free of disease and suitable for exportation. All properties listed are typical characteristics and are not specifications. All suggestions and data are offered in good faith but without guarantee as conditions and methods of use of our products are beyond our control. All claims must be made within 30 days following the date of delivery. The prospective user must determine the suitability of our materials before adopting them on a commercial scale. Suggested uses of our products are not recommendations to use our products in violation of any patent or as a license under any patent of Rockland Immunochemicals, Inc. If you require a commercial license to use this material and do not have one, then return this material, unopened to: Rockland Inc., P.O. BOX 5199, Limerick, Pennsylvania, USA.