



# SZABO SCANDIC

Part of Europa Biosite

## Produktinformation



Forschungsprodukte & Biochemikalien



Zellkultur & Verbrauchsmaterial



Diagnostik & molekulare Diagnostik



Laborgeräte & Service

Weitere Information auf den folgenden Seiten!  
See the following pages for more information!



### Lieferung & Zahlungsart

siehe unsere [Liefer- und Versandbedingungen](#)

### Zuschläge

- Mindermengenzuschlag
- Trockeneiszuschlag
- Gefahrgutzuschlag
- Expressversand

### SZABO-SCANDIC HandelsgmbH

Quellenstraße 110, A-1100 Wien

T. +43(0)1 489 3961-0

F. +43(0)1 489 3961-7

[mail@szabo-scandic.com](mailto:mail@szabo-scandic.com)

[www.szabo-scandic.com](http://www.szabo-scandic.com)

[linkedin.com/company/szaboscandic](https://www.linkedin.com/company/szaboscandic) 

**Datasheet for D500-05-0050****Bovine/Calf Plasma Sterile In Potassium EDTA****Overview**

<b>Description:</b>	Bovine/Calf Plasma (Sterile) in Potassium EDTA - D500-05-0050
<b>Item No.:</b>	D500-05-0050
<b>Size:</b>	50 mL
<b>Origin:</b>	Bovine

**Product Details**

<b>Synonyms:</b>	bovine plasma in Potassium EDTA, sterile plasma from bovine with anticoagulant Potassium EDTA, sterile bovine plasma
<b>Species of Origin:</b>	Bovine

**Application Details**

<b>Application Note:</b>	pH: normal  Immunoelectrophoresis: normal  Hemoglobin: normal  IgG Concentration: normal
<b>Assay Dilutions:</b>	All assays should be optimized by the user. Recommended dilutions (if any) may be listed below.

**Tissue Data**

<b>Tissue Type:</b>	Plasma
<b>Sex:</b>	Mixed
<b>Strain:</b>	Bovine/Calf - Mixed

## Formulation

<b>Physical State:</b>	Liquid (sterile filtered)
<b>Concentration:</b>	89mg/ml by Refractometry
<b>Anticoagulant:</b>	Potassium EDTA
<b>Sterility:</b>	Sterile
<b>Preservative:</b>	None
<b>Stabilizer:</b>	None

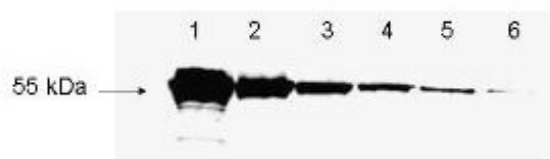
## Shipping & Handling

<b>Shipping Condition:</b>	Dry Ice
<b>Storage Condition:</b>	Store container at -20° C prior to opening. Avoid cycles of freezing and thawing. Use aseptic technique to maintain sterility when opening product.
<b>Expiration:</b>	Expiration date is one (1) year from date of receipt.

## Images

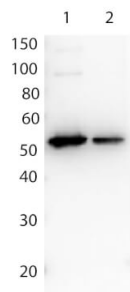
### Western Blot

Western Blot blocked using Sterile Bovine/Calf Plasma in Potassium EDTA.



**Western Blot**

Western Blot blocked using Sterile Bovine/Calf Plasma in Potassium ETDA.

**Disclaimer**

This product is for research use only and is not intended for therapeutic or diagnostic applications. Please contact a technical service representative for more information. All products of animal origin manufactured by Rockland Immunochemicals are derived from starting materials of North American origin. Collection was performed in United States Department of Agriculture (USDA) inspected facilities and all materials have been inspected and certified to be free of disease and suitable for exportation. All properties listed are typical characteristics and are not specifications. All suggestions and data are offered in good faith but without guarantee as conditions and methods of use of our products are beyond our control. All claims must be made within 30 days following the date of delivery. The prospective user must determine the suitability of our materials before adopting them on a commercial scale. Suggested uses of our products are not recommendations to use our products in violation of any patent or as a license under any patent of Rockland Immunochemicals, Inc. If you require a commercial license to use this material and do not have one, then return this material, unopened to: Rockland Inc., P.O. BOX 5199, Limerick, Pennsylvania, USA.