



SZABO SCANDIC

Part of Europa Biosite

Produktinformation



Forschungsprodukte & Biochemikalien



Zellkultur & Verbrauchsmaterial



Diagnostik & molekulare Diagnostik



Laborgeräte & Service

Weitere Information auf den folgenden Seiten!
See the following pages for more information!



Lieferung & Zahlungsart

siehe unsere [Liefer- und Versandbedingungen](#)

Zuschläge

- Mindermengenzuschlag
- Trockeneiszuschlag
- Gefahrgutzuschlag
- Expressversand

SZABO-SCANDIC HandelsgmbH

Quellenstraße 110, A-1100 Wien

T. +43(0)1 489 3961-0

F. +43(0)1 489 3961-7

mail@szabo-scandic.com

www.szabo-scandic.com

[linkedin.com/company/szaboscandic](https://www.linkedin.com/company/szaboscandic) 

Datasheet for D609-5000**Mouse Gamma Globulin Fraction****Overview**

Description:	Mouse Gamma Globulin Fraction (BULK ORDER) - D609-5000
Item No.:	D609-5000
Size:	5 g
Applications:	SDS-PAGE, ELISA
Origin:	Mouse

Product Details

Background:	Mouse Gamma Globulin Fraction consists of the fraction of blood serum which contains whole antibodies as well as other non-albumin plasma proteins. Gamma globulins can be utilized therapeutically to temporarily boost an patient's immunity (such as after an immunosuppressive infection) or to increase the likelihood of kidney transplant acceptance. Gamma Globulin Fraction can be utilized in molecular biology experiments as a control reagent.
Synonyms:	Plasma Gamma Globulin, Serum Gamma Globulin, Globulin Fractions, Gammaglobulin, mouse gamma fraction
Species of Origin:	Mouse
Type:	Native Protein

Target Details

Immunogen:	Not applicable
Purity/Specificity:	Mouse Gamma Globulin Fraction was prepared from normal serum by a multi-step process which includes delipidation and salt fractionation followed by extensive dialysis against the buffer stated above. Assay by immunoelectrophoresis resulted in precipitin arcs against anti-Mouse Serum corresponding to gamma globulins.
Relevant Links:	<ul style="list-style-type: none">D609 SDS

Application Details

Tested Applications:	SDS-PAGE
-----------------------------	----------

Suggested Applications:	ELISA (Based on references)
Application Note:	Mouse gamma globulin blocking reagent has been tested by SDS-PAGE and is an ideal blocker for western blotting, ELISA, Immunohistochemistry and other detection assays.
Assay Dilutions:	All assays should be optimized by the user. Recommended dilutions (if any) may be listed below.
ELISA:	User Optimized
IHC:	User Optimized
WB:	User Optimized

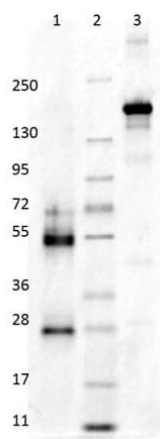
Formulation

Physical State:	Lyophilized
Concentration:	10 mg/mL by UV absorbance at 280 nm
Buffer:	0.02 M Potassium Phosphate, 0.15 M Sodium Chloride, pH 7.2
Preservative:	0.01% (w/v) Sodium Azide
Stabilizer:	None
Reconstitution Buffer:	Restore with deionized water (or equivalent)

Shipping & Handling

Shipping Condition:	Ambient
Storage Condition:	Store vial at 4° C prior to restoration. For extended storage aliquot contents and freeze at -20° C or below. Avoid cycles of freezing and thawing. Centrifuge product if not completely clear after standing at room temperature. This product is stable for several weeks at 4° C as an undiluted liquid. Dilute only prior to immediate use.
Expiration:	Expiration date is one (1) year from date of receipt.

Images



SDS-PAGE

SDS-Page of MOUSE Gamma Globulin Fraction. Lane 1: Mouse Gamma Globulin Reduced. Lane 2: Molecular Weight Marker. Lane 3: Mouse Gamma Globulin Non-Reduced. Load: 1.0 µg per lane. Predicted/Observed size-Reduced: 55 and 28 kDa. Predicted/Observed size-Non-Reduced: 160 kDa.

References

- Wang X et al. Rab12 is a regulator of LRRK2 and its activation by damaged lysosomes. *Elife*. (2023)
- Pearson JA et al. IgM-associated gut bacteria in obesity and type 2 diabetes in C57BL/6 mice and humans. *Diabetologia*. (2022)
- Wang X et al. Understanding LRRK2 kinase activity in preclinical models and human subjects through quantitative analysis of LRRK2 and pT73 Rab10. *Sci Rep*. (2021)
- Kruse N et al. Quantification of alpha-synuclein in biological fluids by electrochemiluminescence-based detection. *Methods Mol Biol*. (2019)
- Zaworski, P et al. SMN Protein Can Be Reliably Measured in Whole Blood with an Electrochemiluminescence (ECL) Immunoassay: Implications for Clinical Trials. *PLoS One* (2016)

Disclaimer

This product is for research use only and is not intended for therapeutic or diagnostic applications. Please contact a technical service representative for more information. All products of animal origin manufactured by Rockland Immunochemicals are derived from starting materials of North American origin. Collection was performed in United States Department of Agriculture (USDA) inspected facilities and all materials have been inspected and certified to be free of disease and suitable for exportation. All properties listed are typical characteristics and are not specifications. All suggestions and data are offered in good faith but without guarantee as conditions and methods of use of our products are beyond our control. All claims must be made within 30 days following the date of delivery. The prospective user must determine the suitability of our materials before adopting them on a commercial scale. Suggested uses of our products are not recommendations to use our products in violation of any patent or as a license under any patent of Rockland Immunochemicals, Inc. If you require a commercial license to use this material and do not have one, then return this material, unopened to: Rockland Inc., P.O. BOX 5199, Limerick, Pennsylvania, USA.