



# SZABO SCANDIC

Part of Europa Biosite

## Produktinformation



Forschungsprodukte & Biochemikalien



Zellkultur & Verbrauchsmaterial



Diagnostik & molekulare Diagnostik



Laborgeräte & Service

Weitere Information auf den folgenden Seiten!  
See the following pages for more information!



### Lieferung & Zahlungsart

siehe unsere [Liefer- und Versandbedingungen](#)

### Zuschläge

- Mindermengenzuschlag
- Trockeneiszuschlag
- Gefahrgutzuschlag
- Expressversand

### SZABO-SCANDIC Handels GmbH

Quellenstraße 110, A-1100 Wien

T. +43(0)1 489 3961-0

F. +43(0)1 489 3961-7

[mail@szabo-scandic.com](mailto:mail@szabo-scandic.com)

[www.szabo-scandic.com](http://www.szabo-scandic.com)

[linkedin.com/company/szaboscandic](https://www.linkedin.com/company/szaboscandic)



**Datasheet for D610-1000****Rabbit Gamma Globulin Fraction****Overview**

<b>Description:</b>	Rabbit Gamma Globulin Fraction - D610-1000
<b>Item No.:</b>	D610-1000
<b>Size:</b>	1 g
<b>Applications:</b>	SDS-PAGE, ELISA
<b>Origin:</b>	Rabbit

**Product Details**

<b>Background:</b>	Rabbit Gamma Globulin Fraction consists of the fraction of blood serum which contains whole antibodies as well as other non-albumin plasma proteins. Gamma globulins can be utilized therapeutically to temporarily boost an patient's immunity (such as after an immunosuppressive infection) or to increase the likelihood of kidney transplant acceptance. Gamma Globulin Fraction can be utilized in molecular biology experiments as a control reagent.
<b>Synonyms:</b>	Plasma Gamma Globulin, Serum Gamma Globulin, Globulin Fractions, Gammaglobulin, rabbit gamma fraction
<b>Species of Origin:</b>	Rabbit
<b>Type:</b>	Native Protein

**Target Details**

<b>Purity/Specificity:</b>	Rabbit Gamma Globulin Fraction was prepared from normal Rabbit serum by a multi-step process which includes delipidation and salt fractionation followed by extensive dialysis against the buffer stated above. Rabbit Gamma Globulin Fraction was assayed by immunoelectrophoresis resulted in precipitin arcs against anti-Rabbit Serum corresponding to gamma globulins.
----------------------------	---

**Application Details**

<b>Tested Applications:</b>	SDS-PAGE
<b>Suggested Applications:</b>	ELISA (Based on references)

<b>Application Note:</b>	Rabbit Gamma Globulin Fraction has been tested by SDS-PAGE and can be utilized in Western Blotting, Immunohistochemistry and ELISA experiments.
<b>Assay Dilutions:</b>	All assays should be optimized by the user. Recommended dilutions (if any) may be listed below.
<b>ELISA:</b>	User Optimized
<b>IF:</b>	User Optimized
<b>IHC:</b>	User Optimized
<b>WB:</b>	User Optimized

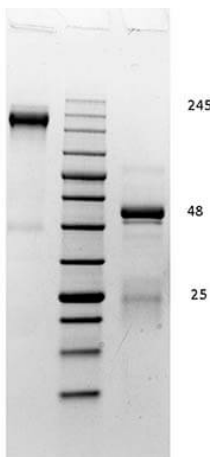
## Formulation

<b>Physical State:</b>	Lyophilized
<b>Concentration:</b>	60.0 mg/mL by UV absorbance at 280 nm
<b>Buffer:</b>	0.02 M Potassium Phosphate, 0.15 M Sodium Chloride, pH 7.2
<b>Preservative:</b>	0.01% (w/v) Sodium Azide
<b>Reconstitution Volume:</b>	100 mL
<b>Reconstitution Buffer:</b>	Restore with deionized water (or equivalent)

## Shipping & Handling

<b>Shipping Condition:</b>	Ambient
<b>Storage Condition:</b>	Store Rabbit Gamma at 4° C prior to restoration. For extended storage aliquot contents and freeze at -20° C or below. Avoid cycles of freezing and thawing. Centrifuge product if not completely clear after standing at room temperature. Rabbit Gamma Globulin Fraction is stable for several weeks at 4° C as an undiluted liquid. Dilute only prior to immediate use.
<b>Expiration:</b>	Expiration date is one (1) year from date of receipt.

## Images

**SDS-PAGE**

SDS PAGE of Rabbit Gamma Globulin. Lane 1: Non-Reduced Rabbit Gamma Globulin. Lane 2: 5µL Opal Prestained Marker MB-210-0500. Lane 3: Reduced Rabbit Gamma Globulin. Load: 1µg per lane. Predicted/Observed size: Non-Reduced at 160kDa; Reduced at 55, 25 kDa.

## References

- Wang X et al. Rab12 is a regulator of LRRK2 and its activation by damaged lysosomes. *Elife*. (2023)
- Wang X et al. Understanding LRRK2 kinase activity in preclinical models and human subjects through quantitative analysis of LRRK2 and pT73 Rab10. *Sci Rep*. (2021)

## Disclaimer

This product is for research use only and is not intended for therapeutic or diagnostic applications. Please contact a technical service representative for more information. All products of animal origin manufactured by Rockland Immunochemicals are derived from starting materials of North American origin. Collection was performed in United States Department of Agriculture (USDA) inspected facilities and all materials have been inspected and certified to be free of disease and suitable for exportation. All properties listed are typical characteristics and are not specifications. All suggestions and data are offered in good faith but without guarantee as conditions and methods of use of our products are beyond our control. All claims must be made within 30 days following the date of delivery. The prospective user must determine the suitability of our materials before adopting them on a commercial scale. Suggested uses of our products are not recommendations to use our products in violation of any patent or as a license under any patent of Rockland Immunochemicals, Inc. If you require a commercial license to use this material and do not have one, then return this material, unopened to: Rockland Inc., P.O. BOX 5199, Limerick, Pennsylvania, USA.