



# SZABO SCANDIC

Part of Europa Biosite

## Produktinformation



Forschungsprodukte & Biochemikalien



Zellkultur & Verbrauchsmaterial



Diagnostik & molekulare Diagnostik



Laborgeräte & Service

Weitere Information auf den folgenden Seiten!  
See the following pages for more information!



### Lieferung & Zahlungsart

siehe unsere [Liefer- und Versandbedingungen](#)

### Zuschläge

- Mindermengenzuschlag
- Trockeneiszuschlag
- Gefahrgutzuschlag
- Expressversand

### SZABO-SCANDIC HandelsgmbH

Quellenstraße 110, A-1100 Wien

T. +43(0)1 489 3961-0

F. +43(0)1 489 3961-7

[mail@szabo-scandic.com](mailto:mail@szabo-scandic.com)

[www.szabo-scandic.com](http://www.szabo-scandic.com)

[linkedin.com/company/szaboscandic](https://www.linkedin.com/company/szaboscandic) 

**Datasheet for D612-0025**

## Sheep Gamma Globulin

### Overview

<b>Description:</b>	Sheep Gamma Globulin (BULK ORDER) - D612-0025
<b>Item No.:</b>	D612-0025
<b>Size:</b>	25 g
<b>Applications:</b>	SDS-PAGE
<b>Origin:</b>	Sheep

### Product Details

<b>Background:</b>	Sheep gamma globulin blocking reagent is an ideal blocker for western blotting, ELISA, Immunohistochemistry and other detection assays. Gamma globulins are a class of globulins, identified by their position after serum protein electrophoresis. The most significant gamma globulins are immunoglobulins ("Igs"), more commonly known as antibodies, although some Igs are not gamma globulins, and some gamma globulins are not Igs. Globulin is one of the three main types of serum proteins, the others being albumin and fibrinogen. Some globulins are produced in the liver, while others are made by the immune system.
<b>Synonyms:</b>	Plasma Gamma Globulin, Serum Gamma Globulin, Globulin Fractions, Gammaglobulin, sheep gamma fraction
<b>Species of Origin:</b>	Sheep
<b>Type:</b>	Native Protein

### Target Details

<b>Immunogen:</b>	Not applicable
<b>Purity/Specificity:</b>	This product was prepared from normal Sheep serum by a multi-step process which includes delipidation and salt fractionation followed by extensive dialysis against the buffer stated above. Assay by immunoelectrophoresis resulted in precipitin arcs against anti-Sheep Serum corresponding to gamma globulins.
<b>Relevant Links:</b>	<ul style="list-style-type: none"><li><a href="#">D612 SDS</a></li></ul>

## Application Details

<b>Tested Applications:</b>	SDS-PAGE
<b>Application Note:</b>	Sheep Gamma Globulin Fraction has been tested by SDS-PAGE and can be utilized in Western Blotting and ELISA experiments.
<b>Assay Dilutions:</b>	All assays should be optimized by the user. Recommended dilutions (if any) may be listed below.
<b>ELISA:</b>	User Optimized
<b>IHC:</b>	User Optimized
<b>WB:</b>	User Optimized

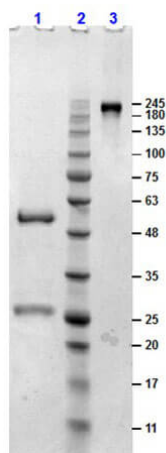
## Formulation

<b>Physical State:</b>	Lyophilized
<b>Concentration:</b>	77.1 mg/mL by UV absorbance at 280 nm
<b>Buffer:</b>	0.02 M Potassium Phosphate, 0.15 M Sodium Chloride, pH 7.2
<b>Preservative:</b>	0.01% (w/v) Sodium Azide
<b>Stabilizer:</b>	None
<b>Reconstitution Buffer:</b>	Restore with deionized water (or equivalent)

## Shipping & Handling

<b>Shipping Condition:</b>	Ambient
<b>Storage Condition:</b>	Store vial at 4° C prior to restoration. For extended storage aliquot contents and freeze at -20° C or below. Avoid cycles of freezing and thawing. Centrifuge product if not completely clear after standing at room temperature. This product is stable for several weeks at 4° C as an undiluted liquid. Dilute only prior to immediate use.
<b>Expiration:</b>	Expiration date is one (1) year from date of receipt.

## Images



#### SDS-PAGE

SDS-PAGE results of Sheep Gamma Globulin. Lane 1: reduced Sheep Gamma Globulin. Lane 2: Opal PreStained Molecular Weight Ladder (p/n MB-210-0500). Lane 3: non-reduced Sheep Gamma Globulin. Load: 1.0µg. 4-20% SDS Gel, Coomassie Blue Stained.

## Disclaimer

This product is for research use only and is not intended for therapeutic or diagnostic applications. Please contact a technical service representative for more information. All products of animal origin manufactured by Rockland Immunochemicals are derived from starting materials of North American origin. Collection was performed in United States Department of Agriculture (USDA) inspected facilities and all materials have been inspected and certified to be free of disease and suitable for exportation. All properties listed are typical characteristics and are not specifications. All suggestions and data are offered in good faith but without guarantee as conditions and methods of use of our products are beyond our control. All claims must be made within 30 days following the date of delivery. The prospective user must determine the suitability of our materials before adopting them on a commercial scale. Suggested uses of our products are not recommendations to use our products in violation of any patent or as a license under any patent of Rockland Immunochemicals, Inc. If you require a commercial license to use this material and do not have one, then return this material, unopened to: Rockland Inc., P.O. BOX 5199, Limerick, Pennsylvania, USA.