



# SZABO SCANDIC

Part of Europa Biosite

## Produktinformation



Forschungsprodukte & Biochemikalien



Zellkultur & Verbrauchsmaterial



Diagnostik & molekulare Diagnostik



Laborgeräte & Service

Weitere Information auf den folgenden Seiten!  
See the following pages for more information!



### Lieferung & Zahlungsart

siehe unsere [Liefer- und Versandbedingungen](#)

### Zuschläge

- Mindermengenzuschlag
- Trockeneiszuschlag
- Gefahrgutzuschlag
- Expressversand

### SZABO-SCANDIC Handels GmbH

Quellenstraße 110, A-1100 Wien

T. +43(0)1 489 3961-0

F. +43(0)1 489 3961-7

[mail@szabo-scandic.com](mailto:mail@szabo-scandic.com)

[www.szabo-scandic.com](http://www.szabo-scandic.com)

[linkedin.com/company/szaboscandic](https://www.linkedin.com/company/szaboscandic) 

**Datasheet for K-BR8****AKT2 Antibody Combo Pack****Overview**

<b>Description:</b>	AKT2 Antibody Combo Pack - K-BR8
<b>Item No.:</b>	K-BR8
<b>Size:</b>	1 Pack
<b>Applications:</b>	WB
<b>Reactivity:</b>	Human
<b>Host Species:</b>	Mouse

**Product Details**

<b>Background:</b>	This primary and secondary antibody pair comes with matched antibody pairs to detect and quantify endogenous protein levels of human AKT2. AKT2 Antibody detects AKT2 which is a component of the PI-3 kinase pathway and is activated by phosphorylation at Ser 473 and Thr 308. AKT is a cytoplasmic protein also known as Protein Kinase B (PKB) and rac (related to A and C kinases). AKT is a key regulator of many signal transduction pathways. AKT Exhibits tight control over cell proliferation and cell viability. Overexpression or inappropriate activation of AKT is noted in many types of cancer. AKT mediates many of the downstream events of PI 3-kinase (a lipid kinase activated by growth factors, cytokines and insulin). PI 3-kinase recruits AKT to the membrane, where it is activated by PDK1 phosphorylation. Once phosphorylated, AKT dissociates from the membrane and phosphorylates targets in the cytoplasm and the cell nucleus. AKT has two main roles: (i) inhibition of apoptosis; (ii) promotion of proliferation. Anti-AKT2 Antibody is ideal for investigators involved in Cell Signaling, Neuroscience and Signal Transduction research.
<b>Synonyms:</b>	AKT 2 antibody pair, AKT-2, PKB antibody, PKB gamma antibody, PKBGAMMA antibody, PRKBG antibody, Protein kinase Akt 2 antibody, Protein kinase B gamma antibody, RAC-gamma serine/threonine-protein kinase, RAC-PK-gamma, primary and secondary antibody pair, Primary +Secondary pair, matched antibody pair
<b>Host Species:</b>	Mouse
<b>Clonality:</b>	Monoclonal
<b>Clone ID:</b>	16C8.E4.G7.E9
<b>Format:</b>	IgG2b
<b>Detection Kit Type:</b>	Combo Pack

## Target Details

<b>Gene Name:</b>	AKT2
<b>Reactivity:</b>	Human
<b>Immunogen Type:</b>	Conjugated Peptide
<b>Immunogen:</b>	Anti-AKT2 Antibody was produced in mice by repeated immunizations with a synthetic peptide corresponding to internal residues of human AKT2 protein. Anti-Mouse IgG HRP secondary antibody was produced by repeated immunizations in rabbits with Mouse IgG whole molecule.
<b>Purity/Specificity:</b>	This AKT2 Primary and Secondary Antibody Combo Pack has been carefully chosen to give best results. Anti-AKT2 antibody is directed against human AKT2. The antibody detects both unphosphorylated and phosphorylated forms of the protein. Anti-AKT2 was purified from concentrated tissue culture supernate by Protein A chromatography. Cross reactivity with AKT2 from other species has not been determined, however, the sequence of the immunogen shows 88% identity to mouse and 90% identity with rat, therefore, cross reactivity is expected. HRP secondary antibody was prepared from monospecific antiserum by immunoaffinity chromatography using Mouse IgG coupled to agarose beads followed by solid phase adsorption (s) to remove any unwanted reactivities. This product shows balanced reactivity to Mouse IgG1, IgG2a, IgG2b and IgG3 proteins and is suitable to screen IgG class hybridoma clones. Minimal cross reactivity is observed against other Mouse immunoglobulin classes or light chain proteins. This antibody pair is sufficient for up to 5 mini blots at 7.5 x 8 cm <sup>2</sup> (1,800 cm <sup>2</sup> ).
<b>Relevant Links:</b>	<ul style="list-style-type: none"><li>• <a href="#">GeneID - 10000</a></li><li>• <a href="#">UniProtKB - P31751</a></li><li>• <a href="#">NCBI - Q9Y243</a></li></ul>

## Application Details

<b>Tested Applications:</b>	WB
<b>Application Note:</b>	Anti-AKT2 Antibody with the matched secondary are suitable for ELISA, immunohistochemistry, and western blotting. Expect a band approximately 56 kDa in size corresponding to AKT2 protein by western blotting in the appropriate cell lysate or extract. This monoclonal antibody reacts with human AKT2. Specific conditions for reactivity should be optimized by the end user. For immunohistochemistry we recommend the use of fresh frozen tissues. Attempts at staining paraffin-embedded formalin fixed tissues were negative. No pre-treatment of sample is required.
<b>Assay Dilutions:</b>	All assays should be optimized by the user. Recommended dilutions (if any) may be listed below.
<b>ELISA:</b>	1:2000 - 1:10000

**WB:** 1:500 - 1:2000

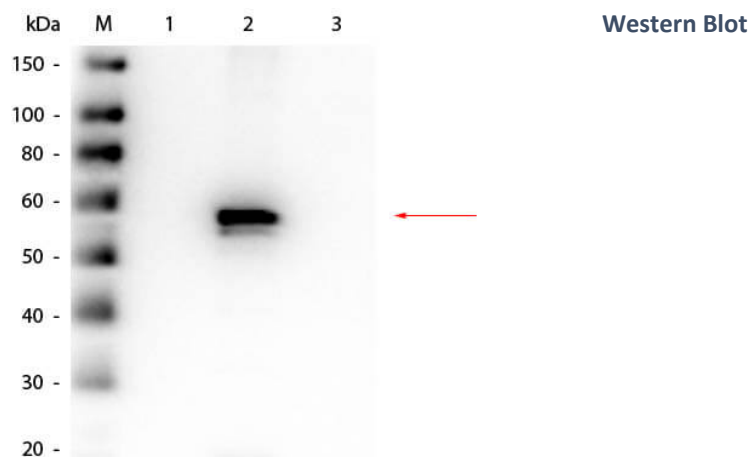
## Formulation

<b>Physical State:</b>	Liquid and Lyophilized
<b>Concentration:</b>	1 mg/ml by UV absorbance at 280 nm
<b>Buffer:</b>	0.02 M Potassium Phosphate, 0.15 M Sodium Chloride, pH 7.2
<b>Preservative:</b>	0.01% (w/v) Sodium Azide
<b>Stabilizer:</b>	None
<b>Reconstitution Volume:</b>	1.0 mL
<b>Reconstitution Buffer:</b>	Restore with deionized water (or equivalent)

## Shipping & Handling

<b>Shipping Condition:</b>	Dry Ice
<b>Storage Condition:</b>	Primary antibody: the vial contains a relatively low volume of reagent (25 µL). Store vial at -20° C or below prior to opening. To minimize loss of volume dilute 1:10 by adding 225 µL of the buffer stated above directly to the vial. Recap, mix thoroughly and briefly centrifuge to collect the volume at the bottom of the vial. Use this intermediate dilution when calculating final dilutions as recommended below. Store the vial at -20°C or below after dilution. Avoid cycles of freezing and thawing. Secondary antibody: Store secondary antibody at 4° C prior to restoration. For extended storage aliquot antibody and freeze at -20° C or below. Avoid cycles of freezing and thawing. Centrifuge product if not completely clear after standing at room temperature. Anti-Mouse IgG HRP secondary antibody is stable for several weeks at 4° C as an undiluted liquid. Dilute only prior to immediate use.
<b>Expiration:</b>	Expiration date is one (1) year from date of receipt.

## Images



## Disclaimer

This product is for research use only and is not intended for therapeutic or diagnostic applications. Please contact a technical service representative for more information. All products of animal origin manufactured by Rockland Immunochemicals are derived from starting materials of North American origin. Collection was performed in United States Department of Agriculture (USDA) inspected facilities and all materials have been inspected and certified to be free of disease and suitable for exportation. All properties listed are typical characteristics and are not specifications. All suggestions and data are offered in good faith but without guarantee as conditions and methods of use of our products are beyond our control. All claims must be made within 30 days following the date of delivery. The prospective user must determine the suitability of our materials before adopting them on a commercial scale. Suggested uses of our products are not recommendations to use our products in violation of any patent or as a license under any patent of Rockland Immunochemicals, Inc. If you require a commercial license to use this material and do not have one, then return this material, unopened to: Rockland Inc., P.O. BOX 5199, Limerick, Pennsylvania, USA.